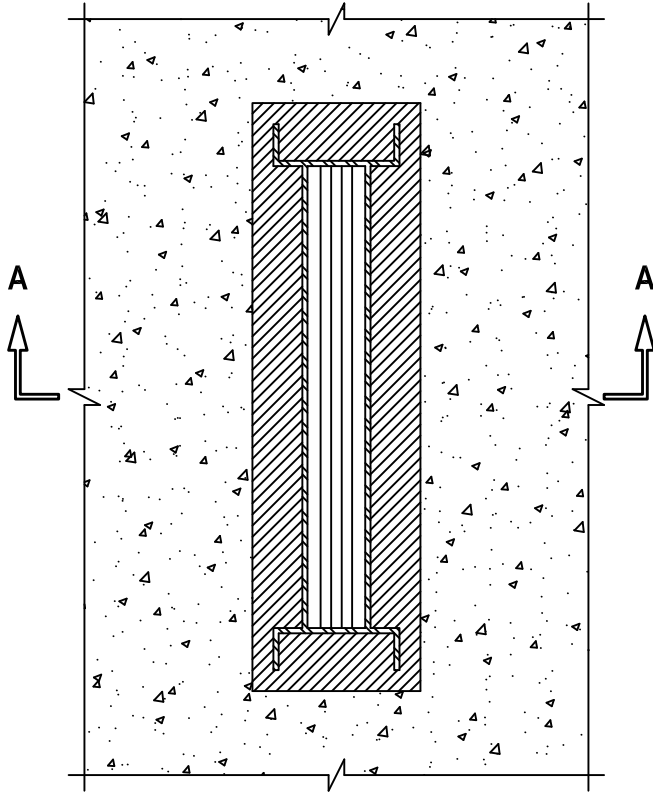


ELECTRICAL BUSWAY THROUGH CONCRETE FLOOR/WALL OR BLOCK WALL

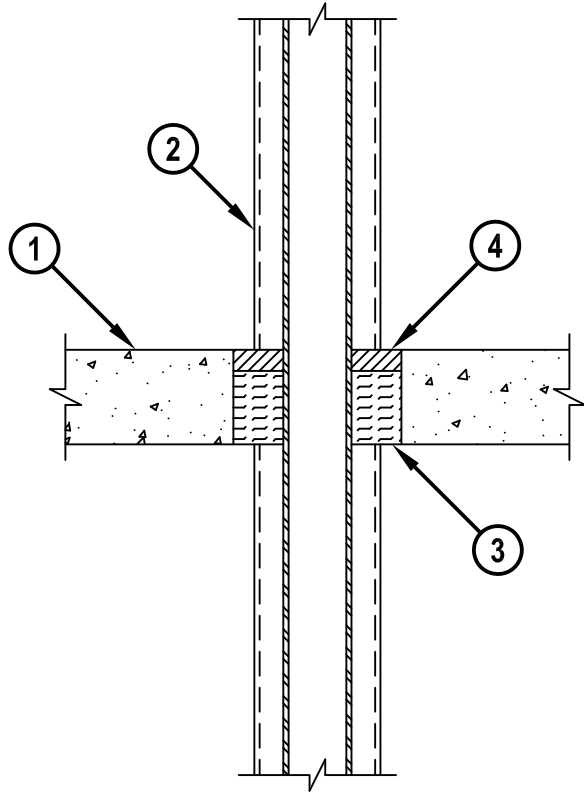
F-RATING = 3-HR.
T-RATING = 0-HR.

CAJ6017d.010615

TOP VIEW



SECTION A-A



1. CONCRETE FLOOR OR WALL ASSEMBLY (3-HR. FIRE-RATING) :
 - A. LIGHTWEIGHT OR NORMAL WEIGHT CONCRETE FLOOR OR WALL (MINIMUM 4-1/2" THICK).
 - B. ANY UL/cUL CLASSIFIED CONCRETE BLOCK WALL.
2. ELECTRICAL BUSWAY (NOMINAL 26" WIDE x 6" DEEP, OR SMALLER) ("I" SHAPED STEEL ENCLOSURE CONTAINING FACTORY MOUNTED ALUMINUM BARS RATED FOR 600V OR 4000A).
3. MINIMUM 3-1/2" THICKNESS MINERAL WOOL (MIN. 4 PCF DENSITY) TIGHTLY PACKED.
4. MINIMUM 1" DEPTH HILTI FS-ONE MAX OR FS-ONE INTUMESCENT FIRESTOP SEALANT.

NOTES : 1. MAXIMUM AREA OF OPENING IS 224 SQ. IN. WITH A MAX. DIMENSION OF 28".
 2. ANNULAR SPACE BETWEEN THE FLANGE TOP OF THE BUSWAY AND THE PERIPHERY OF THE OPENING = 1". ANNULAR SPACE BETWEEN THE WEB OF THE BUSWAY AND THE PERIPHERY OF THE OPENING = 2".
 3. MINIMUM 1" DEPTH HILTI FS-ONE MAX OR FS-ONE INTUMESCENT FIRESTOP SEALANT IS REQUIRED ON BOTH SIDES OF A WALL.



HILTI, Inc.
Tulsa, Oklahoma USA (800) 879-8000

Sheet	1 of 1
Scale	7/64" = 1"
Date	Jan. 06, 2015

Drawing No.

**CAJ
6017d**