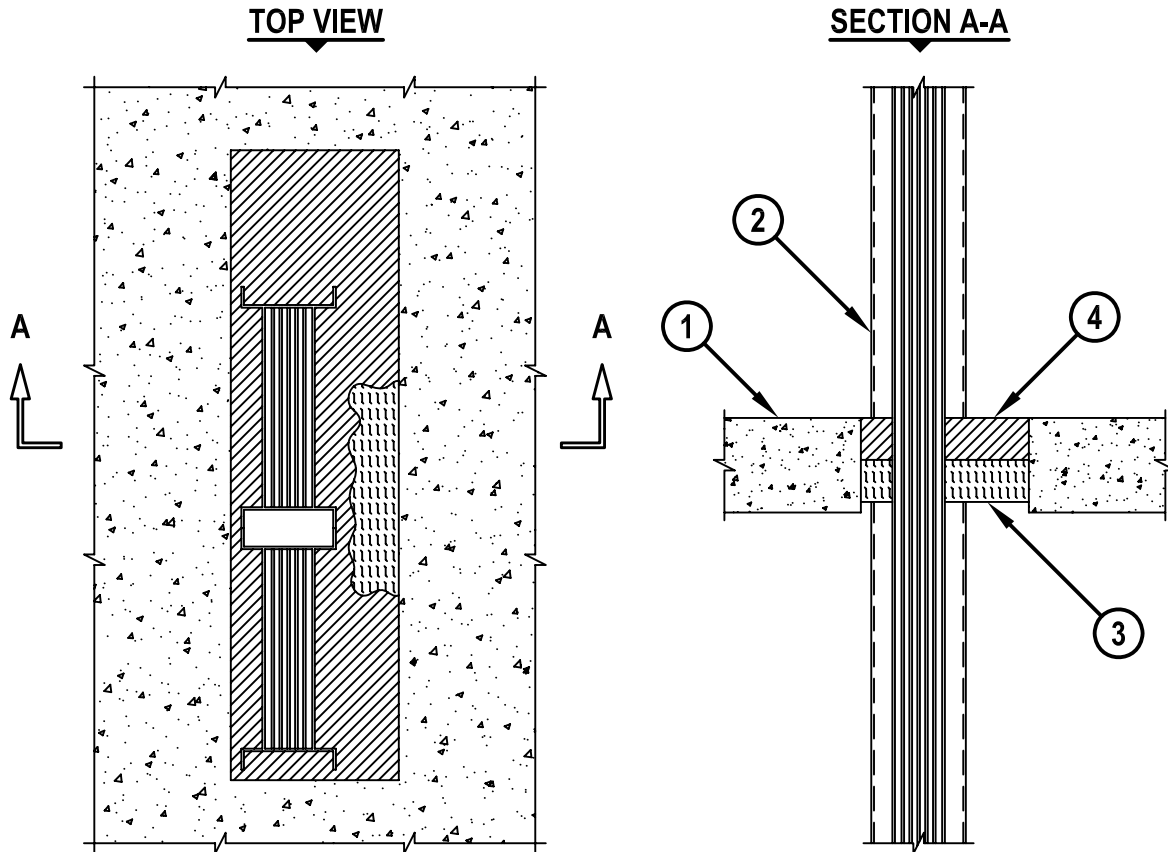


**ELECTRICAL BUSWAY THROUGH CONCRETE FLOOR/WALL OR  
CONCRETE BLOCK WALL ASSEMBLY**

F-RATING = 2-HR.  
T-RATING = 0-HR.

CAJ6036c.061407



1. CONCRETE FLOOR OR WALL ASSEMBLY (2-HR. FIRE-RATING) :
  - A. LIGHTWEIGHT OR NORMAL WEIGHT CONCRETE FLOOR (MINIMUM 4-1/2" THICK).
  - A. LIGHTWEIGHT OR NORMAL WEIGHT CONCRETE WALL (MINIMUM 6" THICK).
  - C. ANY UL/cUL CLASSIFIED CONCRETE BLOCK WALL.
2. ELECTRICAL BUSWAY (UL/cUL CLASSIFIED) (NOMINAL 23" WIDE x 4-1/2" DEEP, OR SMALLER) ("I" SHAPED ALUMINUM ENCLOSURE CONTAINING FACTORY MOUNTED ALUMINUM BARS RATED FOR 600V, 4000A, OR COPPER BARS RATED FOR 600V, 5000A) (SEE NOTE NO. 3 BELOW).
3. MINIMUM 2" THICKNESS MINERAL WOOL (MINIMUM 4 PCF DENSITY) TIGHTLY PACKED AND RECESSED TO ACCOMMODATE HILTI CP 620 FIRE FOAM.
4. MINIMUM 2" DEPTH HILTI CP 620 FIRE FOAM.

NOTES : 1. MAXIMUM AREA OF OPENING = 240 SQ. IN. WITH A MAXIMUM DIMENSION OF 30".  
 2. ANNULAR SPACE = MINIMUM 1/4", MAXIMUM 5-3/4".  
 3. AS AN ALTERNATE TO SINGLE BUSWAY, MAXIMUM TWO ELECTRICAL BUSWAYS (NOMINAL 11-1/4" WIDE x 4-1/2" DEEP, OR SMALLER) MAY BE INSTALLED.  
 4. MINIMUM 2" DEPTH HILTI CP 620 FIRE FOAM IS REQUIRED ON BOTH SIDES OF A WALL ASSEMBLY.



HILTI, Inc.  
Tulsa, Oklahoma USA (800) 879-8000

Sheet	1 of 1
Scale	7/64" = 1"
Date	June 12, 2007

Drawing No.

**CAJ  
6036c**