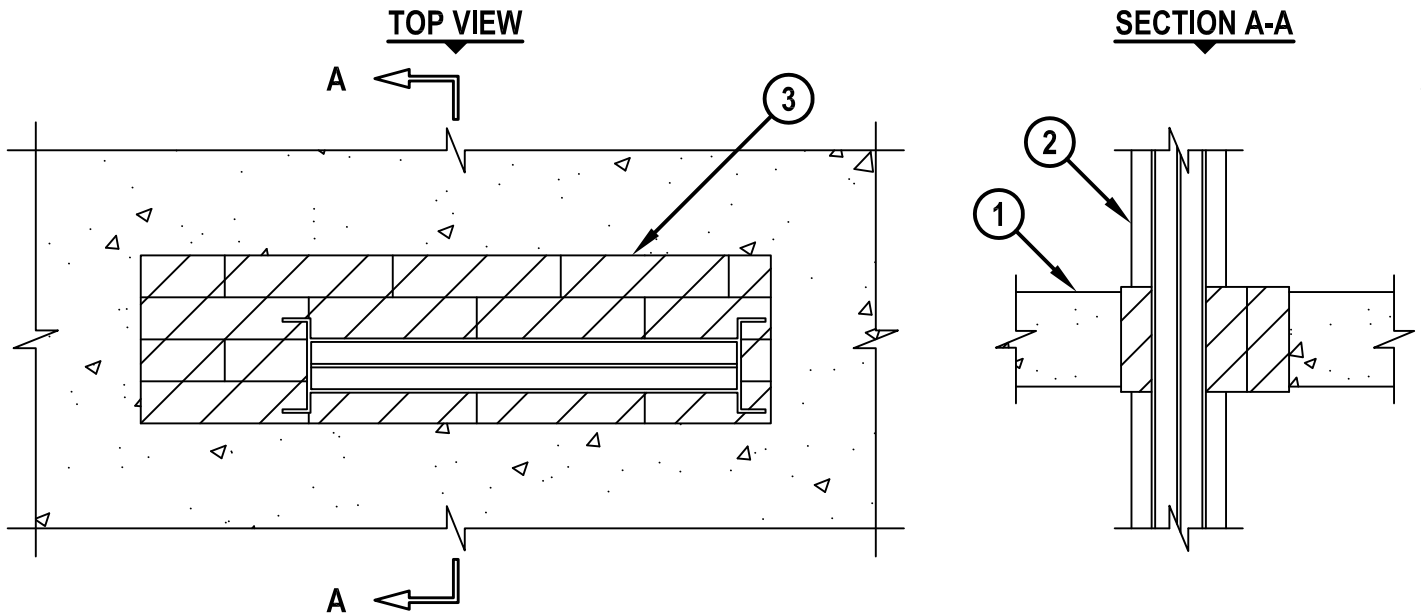


ELECTRICAL BUSWAY THROUGH CONCRETE FLOOR/WALL OR BLOCK WALL

F-RATING = 2-HR.

T-RATING = 0-HR.

CAJ6042b.010615



1. CONCRETE FLOOR OR WALL ASSEMBLY (2-HR. FIRE-RATING) :
 - A. LIGHTWEIGHT OR NORMAL WEIGHT CONCRETE FLOOR OR WALL (MINIMUM 4-1/2" THICK).
 - B. ANY UL/cUL CLASSIFIED CONCRETE BLOCK WALL.
2. ELECTRICAL BUSWAY (NOMINAL 23" WIDE x 4-1/2" DEEP, OR SMALLER) ("I" SHAPED ALUMINUM ENCLOSURE CONTAINING FACTORY MOUNTED ALUMINUM BARS RATED FOR 600V, 4000A, OR COPPER BARS RATED FOR 600V, 5000A).
3. HILTI CFS-BL FIRESTOP BLOCK (2" THICK x 8" WIDE x 5" DEEP, REFERENCE : TOP VIEW) FIRMLY PACKED AND CENTERED WITHIN OPENING.

NOTES :

1. MAXIMUM AREA OF OPENING = 240 SQ. IN., WITH A MAXIMUM DIMENSION OF 30".
2. ANNULAR SPACE = MINIMUM 1/4", MAXIMUM 5-3/4".
3. APPLY HILTI FS-ONE MAX OR FS-ONE INTUMESCENT FIRESTOP SEALANT IN ANY VOID THAT MAY EXIST AROUND PENETRANT OR FIRESTOP BLOCKS.
4. AS AN ALTERNATE TO SINGLE BUSWAY, MAXIMUM TWO ELECTRICAL BUSWAYS (NOMINAL 11-1/4" WIDE x 4-1/2" DEEP, OR SMALLER) MAY BE INSTALLED.
5. FOR BLOCK WALLS, FIRESTOP BLOCKS TO FILL ENTIRE THICKNESS OF WALL UNLESS WALL IS SOLID FILLED.



HILTI, Inc.
Tulsa, Oklahoma USA (800) 879-8000

Sheet	1 of 1
Scale	7/64" = 1"
Date	Jan. 05, 2015

Drawing No.

**CAJ
6042b**