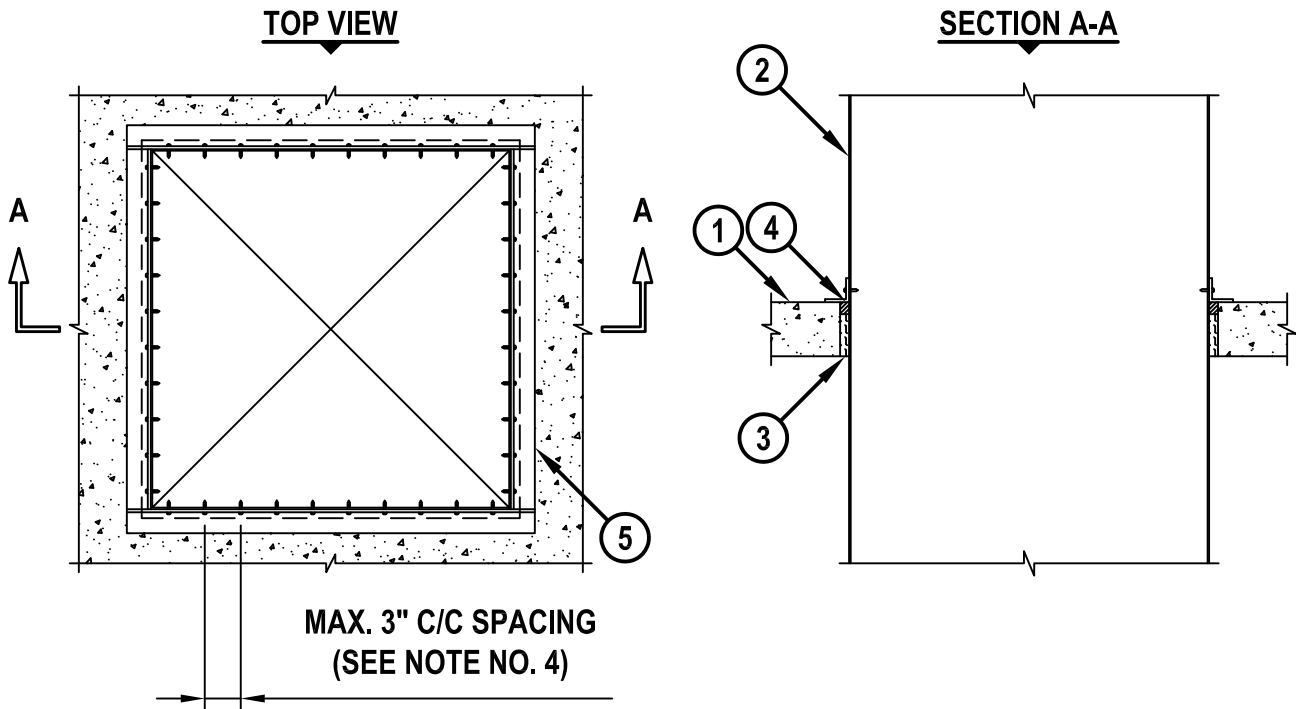


METAL DUCT (W/O DAMPER) THROUGH CONCRETE FLOOR/WALL OR BLOCK WALL

F-RATING = 3-HR.
T-RATING = 0-HR.

CAJ7046g.032118



1. CONCRETE FLOOR OR WALL ASSEMBLY (3-HR. FIRE-RATING) :
 - A. LIGHTWEIGHT OR NORMAL WEIGHT CONCRETE FLOOR (MINIMUM 4-1/2" THICK).
 - B. LIGHTWEIGHT OR NORMAL WEIGHT CONCRETE WALL (MINIMUM 5-1/2" THICK).
 - C. ANY UL/cUL CLASSIFIED CONCRETE BLOCK WALL.
2. SHEET METAL DUCT (MAXIMUM SIZE : 32" x 32", MINIMUM 24 GA. THICK).
(NOTE : NOT FOR USE IN DUCT SYSTEMS CONTAINING A FIRE DAMPER).
3. MINIMUM 3-1/2" THICKNESS MINERAL WOOL (MIN. 4 PCF DENSITY) TIGHTLY PACKED.
4. MINIMUM 1" DEPTH HILTI CP 601S ELASTOMERIC FIRESTOP SEALANT, HILTI CFS-S SIL GG FIRESTOP SILICONE SEALANT, OR HILTI CFS-S SIL SL FIRESTOP SILICONE SEALANT.
5. SEE NOTE NO. 4 BELOW.

NOTES : 1. MAXIMUM AREA OF OPENING = 1139 SQ. IN. WITH A MAXIMUM DIMENSION OF 33-3/4".
 2. ANNULAR SPACE = MINIMUM 1/4", MAXIMUM 1-1/2".
 3. MINIMUM 1" DEPTH HILTI CP 601S ELASTOMERIC FIRESTOP SEALANT OR HILTI CFS-S SIL GG FIRESTOP SILICONE SEALANT IS REQUIRED ON BOTH SIDES OF A WALL ASSEMBLY.
 4. AFTER SEALING SPACE BETWEEN DUCT AND CONCRETE FLOOR/WALL OR BLOCK WALL ASSEMBLY WITH HILTI FIRESTOP SEALANT, FASTEN STEEL ANGLE (L2 x 2 x MINIMUM 16 GA.) TO DUCT WITH NO. 8 (OR LARGER) STEEL SHEET METAL SCREWS. ANGLE DOES NOT HAVE TO BE FASTENED TO CONCRETE FLOOR/WALL OR BLOCK WALL ASSEMBLY.



HILTI, Inc.
Plano, Texas USA (800) 879-8000

Sheet	1 of 1
Scale	1/16" = 1"
Date	Mar. 21, 2018

Drawing No.

**CAJ
7046g**