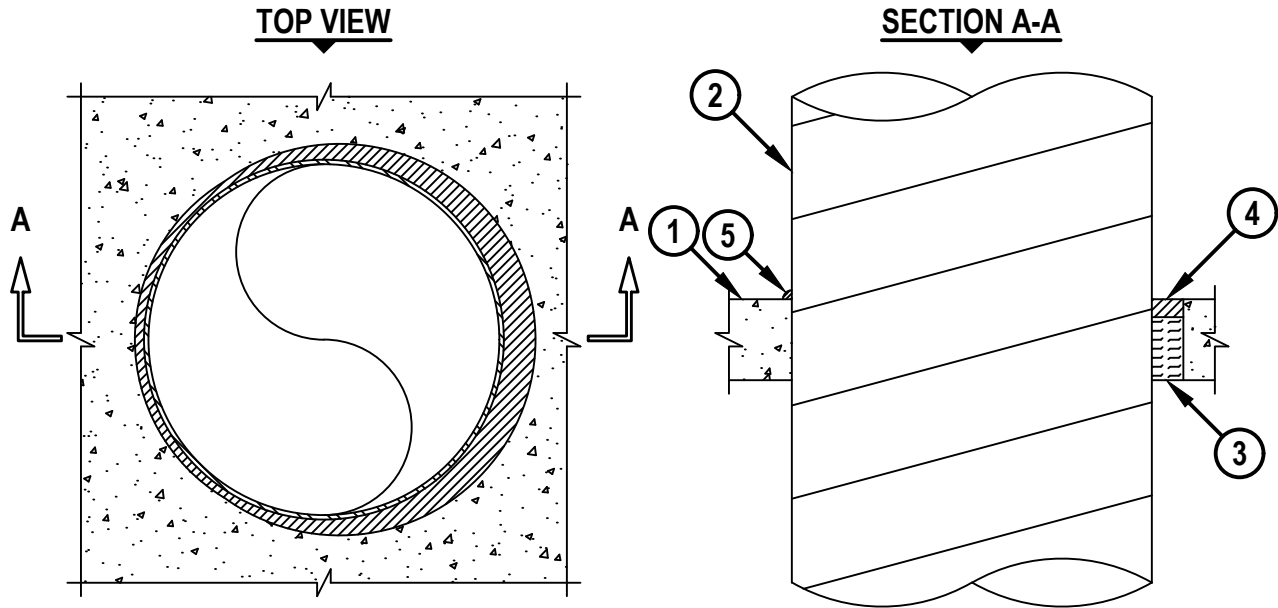


**ROUND SHEET METAL DUCT THROUGH CONCRETE FLOOR/WALL
OR BLOCK WALL ASSEMBLY**

F-RATING = 2-HR.
T-RATING = 0-HR.

CAJ7084e.052421



1. CONCRETE FLOOR OR WALL ASSEMBLY (2-HR. FIRE-RATING) :
 - A. LIGHTWEIGHT OR NORMAL WEIGHT CONCRETE FLOOR OR WALL (MINIMUM 4-1/2" THICK).
 - B. ANY UL/cUL CLASSIFIED CONCRETE BLOCK WALL.
2. PENETRATING ITEM TO BE ONE OF THE FOLLOWING :
 - A. MAXIMUM 20" NOMINAL DIAMETER GALVANIZED SPIRAL WOUND SHEET METAL DUCT (MIN. 24 GA.).
 - B. MAXIMUM 12" NOMINAL DIAMETER GALVANIZED SHEET METAL DUCT (MINIMUM 28 GA.).
3. MINIMUM 3-1/2" THICKNESS MINERAL WOOL (MINIMUM 4 PCF DENSITY) TIGHTLY PACKED.
4. MINIMUM 1" DEPTH HILTI FS-ONE MAX INTUMESCENT FIRESTOP SEALANT, HILTI CFS-S SIL GG FIRESTOP SILICONE SEALANT, HILTI CP 601S ELASTOMERIC FIRESTOP SEALANT, HILTI CP 606 FLEXIBLE FIRESTOP SEALANT, HILTI CFS-S SIL SL FIRESTOP SILICONE SEALANT, OR HILTI CP 604 SELF-LEVELING FIRESTOP SEALANT.
5. MINIMUM 1/2" BEAD HILTI FS-ONE MAX INTUMESCENT FIRESTOP SEALANT, HILTI CFS-S SIL GG FIRESTOP SILICONE SEALANT, HILTI CP 601S ELASTOMERIC FIRESTOP SEALANT, OR HILTI CP 606 FLEXIBLE FIRESTOP SEALANT APPLIED AT POINT OF CONTACT.

NOTES : 1. MAXIMUM DIAMETER OF OPENING = 21-3/4".
 2. ANNULAR SPACE = MINIMUM 0", MAXIMUM 1-1/2".
 3. MINIMUM 1" DEPTH HILTI FS-ONE MAX INTUMESCENT FIRESTOP SEALANT, HILTI CFS-S SIL GG FIRESTOP SILICONE SEALANT, HILTI CP 601S ELASTOMERIC FIRESTOP SEALANT, OR HILTI CP 606 FLEXIBLE FIRESTOP SEALANT IS REQUIRED ON BOTH SIDES OF A WALL ASSEMBLY.



HILTI, Inc.
Plano, Texas USA (800) 879-8000

Sheet	1 of 1
Scale	3/32" = 1"
Date	May 24, 2021

Drawing No.
**CAJ
7084e**