

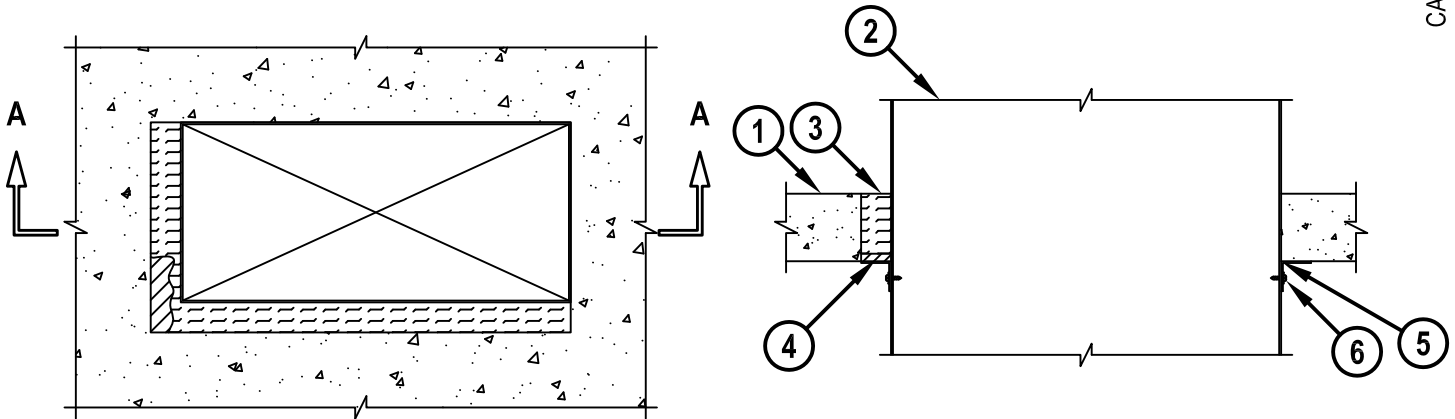
SHEET METAL DUCT THROUGH CONCRETE FLOOR/WALL OR BLOCK WALL

F-RATING = 2-HR.
T-RATING = 1/4-HR.

CAJ7104b.010615

TOP VIEW

SECTION A-A



1. CONCRETE FLOOR OR WALL ASSEMBLY (2-HR. FIRE-RATING) :
 - A. LIGHTWEIGHT OR NORMAL WEIGHT CONCRETE FLOOR OR WALL (MINIMUM 4-1/2" THICK).
 - B. ANY UL/cUL CLASSIFIED CONCRETE BLOCK WALL.
2. MAXIMUM 24" X 12" RECTANGULAR SHEET METAL DUCT (MIN 24 GA.).
(NOTE: NOT FOR USE IN DUCT SYSTEMS CONTAINING A DAMPER).
3. MINIMUM 4" THICKNESS MINERAL WOOL (MIN. 4 PCF DENSITY) TIGHTLY PACKED.
4. MINIMUM 1/2" DEPTH HILTI FS-ONE MAX OR FS-ONE INTUMESCENT FIRESTOP SEALANT FLUSH WITH BOTTOM SURFACE OF FLOOR ASSEMBLY.
5. MINIMUM 1/2" BEAD HILTI FS-ONE MAX OR FS-ONE INTUMESCENT FIRESTOP SEALANT APPLIED AT POINT OF CONTACT.
6. SEE NOTE NO. 4 BELOW.

NOTES : 1. MAXIMUM SIZE OF OPENING = 26" x 14".
 2. ANNULAR SPACE = MINIMUM 0", MAXIMUM 2" (POINT OF CONTACT ON MAXIMUM TWO ADJACENT SIDES).
 3. MINIMUM 1/2" DEPTH HILTI FS-ONE MAX OR FS-ONE INTUMESCENT FIRESTOP SEALANT AND STEEL ANGLES ARE REQUIRED ON BOTH SIDES OF A WALL ASSEMBLY.
 4. AFTER SEALING SPACE BETWEEN DUCT AND CONCRETE FLOOR/WALL OR BLOCK WALL ASSEMBLY WITH HILTI FS-ONE MAX OR FS-ONE, FASTEN STEEL ANGLE (L2 x 2 x MIN. 18 GA.) TO DUCT WITH NO. 8 (OR LARGER) STEEL SHEET METAL SCREWS ON ALL FOUR SIDES OF DUCT (SPACED MAXIMUM 6" C/C). ANGLE DOES NOT HAVE TO BE FASTENED TO CONCRETE FLOOR/WALL OR BLOCK WALL ASSEMBLY.



HILTI, Inc.
Tulsa, Oklahoma USA (800) 879-8000

Sheet	1 of 1
Scale	5/64" = 1"
Date	Jan. 06, 2015

Drawing No.

**CAJ
7104b**