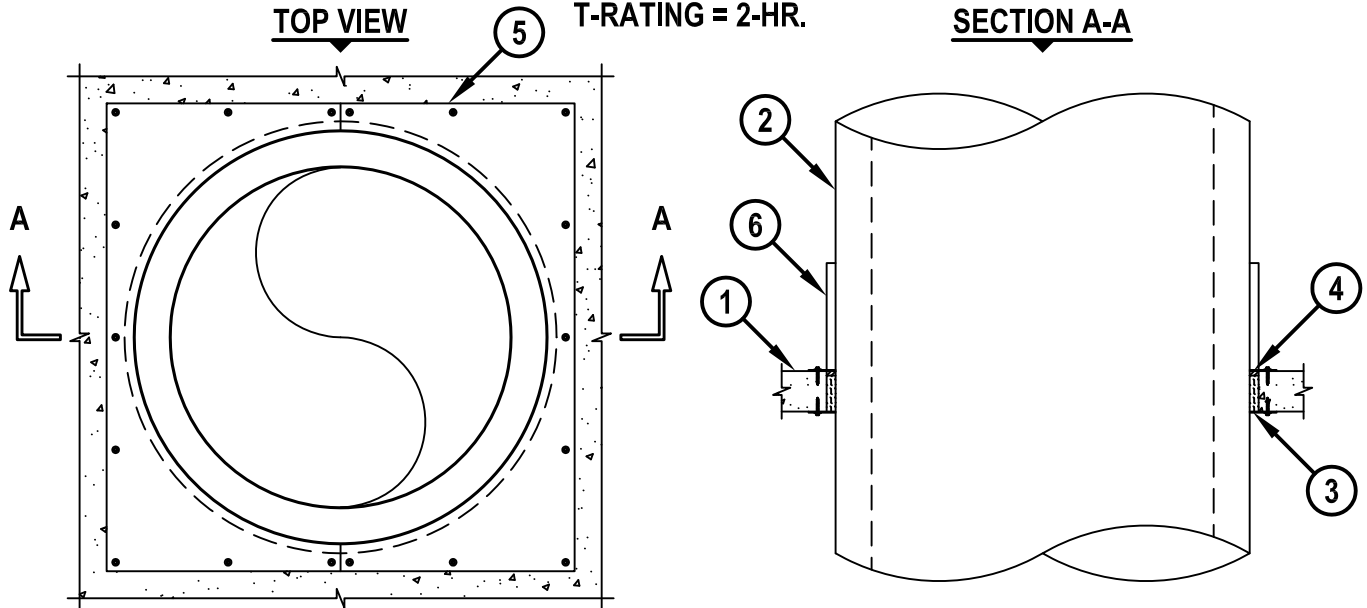


SHEET METAL DUCT THROUGH CONCRETE FLOOR/WALL OR BLOCK WALL

F-RATING = 2-HR.
T-RATING = 2-HR.



CAJ7140c.011515

1. CONCRETE FLOOR OR WALL ASSEMBLY (2-HR. FIRE-RATING) :
 - A. LIGHTWEIGHT OR NORMAL WEIGHT CONCRETE FLOOR (MINIMUM 4-1/2" THICK).
 - B. LIGHTWEIGHT OR NORMAL WEIGHT CONCRETE WALL (MINIMUM 5" THICK).
 - C. ANY UL/cUL CLASSIFIED CONCRETE BLOCK WALL.
2. PENETRATING ITEM TO BE ONE OF THE FOLLOWING :
 - A. MAXIMUM 38" INSIDE DIAMETER GREASE DUCT (FYREGUARD GREASE DUCT OR SLIMVENT GREASE DUCT, MANUFACTURED BY THE SCHEBLER CO.).
 - B. MAXIMUM 38" INSIDE DIAMETER VENTILATION DUCT (FYREGUARD VENTILATION DUCT, MANUFACTURED BY THE SCHEBLER CO.).
3. MINIMUM 4" THICKNESS CERAMIC FIBER INSULATION (MIN. 6 PCF DENSITY) TIGHTLY PACKED AND RECESSED TO ACCOMMODATE SEALANT.
4. MINIMUM 1/2" DEPTH HILTI FS-ONE MAX OR FS-ONE INTUMESCENT FIRESTOP SEALANT OR HILTI CP 618 FIRESTOP PUTTY.
5. TWO PIECE STEEL COVER PLATE (MIN. 20 GA.) WITH OVERLAPPING SEAMS APPLIED TO BOTH SURFACES OF FLOOR OR WALL. COVER PLATE SECURED TO ASSEMBLY WITH 1/4" DIAMETER x 1-3/4" LONG STEEL CONCRETE SCREWS (SPACED MAXIMUM 16" O.C.).
6. STEEL CLOSURE BAND (12" WIDE, MIN. 24 GA.) LINED ON THE INTERIOR WITH 1" THICK CERAMIC FIBER BLANKET (MIN. 10 PCF DENSITY) SUPPLIED BY THE GREASE DUCT MANUFACTURER. TWO PIECE CLOSURE BAND INSTALLED AROUND PENETRATING ITEM IN CONTACT WITH COVER PLATE AND SECURED TOGETHER WITH 1/4-20 x 1-1/2" LONG STEEL BOLTS AND NUTS. CLOSURE BANDS INSTALLED ON TOP SURFACE OF FLOOR AND ON BOTH SURFACES OF WALL.

NOTES : 1. MAXIMUM DIAMETER OF OPENING = 48".
 2. ANNULAR SPACE = MINIMUM 1/2", MAXIMUM 1-1/2".
 3. HILTI FS-ONE MAX OR FS-ONE INTUMESCENT FIRESTOP SEALANT OR HILTI CP 618 FIRESTOP PUTTY IS REQUIRED ON BOTH SIDES OF A WALL.

 Hilti Firestop Systems	HILTI, Inc. Tulsa, Oklahoma USA (800) 879-8000	Sheet 1 of 1	Drawing No. CAJ 7140c
		Scale 3/64" = 1"	
		Date Jan. 15, 2015	
Saving Lives through Innovation and Education			