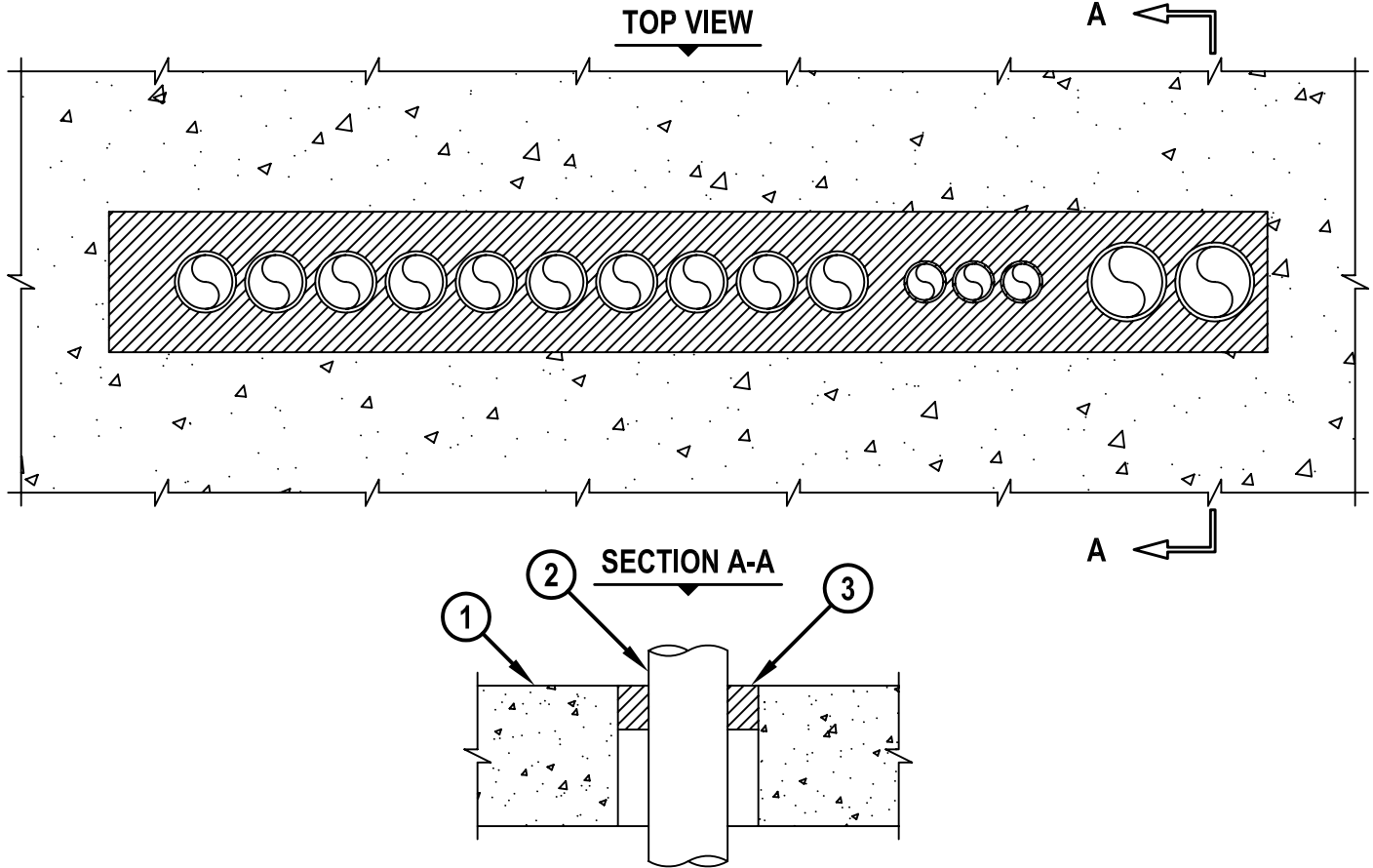


MULTIPLE METAL PIPES THROUGH CONCRETE FLOOR/WALL OR BLOCK WALL

F-RATING = 2-HR.
T-RATING = 0-HR.

CBJ1049a.062703



1. CONCRETE FLOOR OR WALL ASSEMBLY (2-HR. FIRE-RATING) :
 - A. LIGHTWEIGHT OR NORMAL WEIGHT CONCRETE FLOOR OR WALL (MINIMUM 8" THICK).
 - B. ANY UL/ULC CLASSIFIED CONCRETE BLOCK WALL.
2. PENETRATING ITEMS TO CONSIST OF ONE OR MORE OF THE FOLLOWING :
 - A. MAXIMUM 4" NOMINAL DIAMETER STEEL PIPE (SCHEDULE 10 OR HEAVIER).
 - B. MAXIMUM 4" NOMINAL DIAMETER CAST IRON PIPE.
 - C. MAXIMUM 4" NOMINAL DIAMETER STEEL CONDUIT OR EMT.
3. MINIMUM 2-1/2" DEPTH HILTI CP 637 FIRESTOP MORTAR FLUSH WITH TOP SURFACE OF FLOOR OR ONE SURFACE OF WALL.

NOTES : 1. MAXIMUM SIZE OF OPENING = 66" x 8".
 2. ANNULAR SPACE = MINIMUM 1/2", MAXIMUM 12".
 3. (FORMING NOT SHOWN). USE A RIGID BOARD MATERIAL TO SUPPORT HILTI CP 637 FIRESTOP MORTAR DURING ITS INITIAL CURE (MINIMUM 24 HRS.).



HILTI, Inc.
Tulsa, Oklahoma USA (918) 252-6000

Sheet	1 of 1
Scale	3/32" = 1"
Date	June 27, 2003

Drawing No.

**CBJ
1049a**