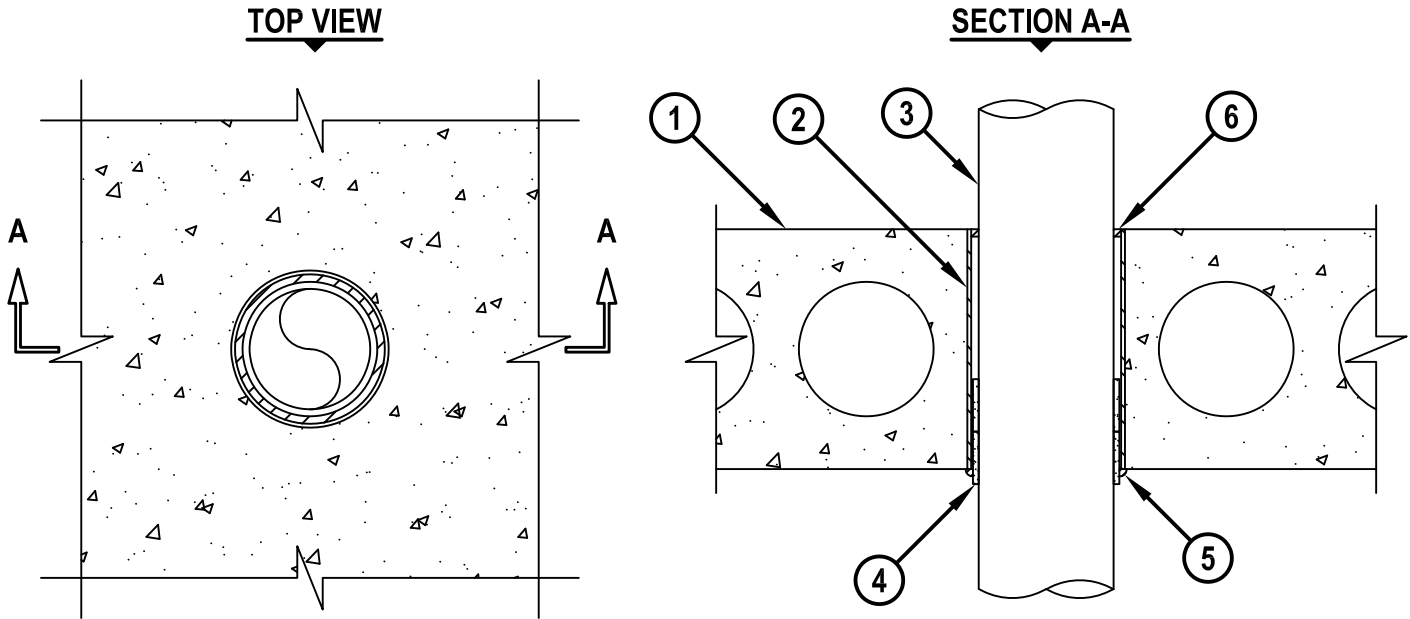


PLASTIC PIPE THROUGH CONCRETE FLOOR/WALL OR CONCRETE BLOCK WALL ASSEMBLY

F-RATING = 2-HR.
T-RATING = 2-HR.

CBJ2012e.012319



1. CONCRETE FLOOR OR WALL ASSEMBLY (2-HR. FIRE-RATING) :
 - A. LIGHTWEIGHT OR NORMAL WEIGHT CONCRETE FLOOR OR WALL (MINIMUM 8" THICK).
 - B. ANY UL CLASSIFIED PRECAST (HOLLOW-CORE) CONCRETE FLOOR (MINIMUM 8" THICK).
 - C. ANY UL CLASSIFIED CONCRETE BLOCK WALL (MINIMUM 8" THICK).
2. MAXIMUM 5" NOMINAL DIAMETER SHEET METAL SLEEVE (MIN. 28 GA.) HAVING A MINIMUM 1" LAP ALONG LONGITUDINAL SEAM. SLEEVE TO BE INSTALLED FLUSH WITH BOTH SURFACES OF FLOOR (SEE NOTE NO. 4 BELOW).
3. PENETRATING ITEM TO BE ONE OF THE FOLLOWING (ALSO SEE NOTE NO. 3 BELOW).
 - A. MAXIMUM 4" NOMINAL DIAMETER PVC PLASTIC PIPE (CELLULAR OR SOLID CORE).
 - B. MAXIMUM 4" NOMINAL DIAMETER CPVC PLASTIC PIPE (CLOSED PIPING SYSTEM ONLY).
4. HILTI CP 648E WRAP STRIP (NOMINAL 3/16" THICK x 1-3/4" WIDE) CONTINUOUSLY WRAPPED AROUND THE OUTER CIRCUMFERENCE OF THE PIPE, COVERING ONCE, WITH ENDS BUTTED AND HELD IN PLACE WITH TAPE. WRAP STRIP TO BE DOUBLE-STACKED AND SLID INTO ANNULAR SPACE, SUCH THAT 1/2" EXTENDS BEYOND BOTTOM SURFACE OF FLOOR.
5. MINIMUM 1/4" BEAD HILTI FS-ONE MAX INTUMESCENT FIRESTOP SEALANT APPLIED AT WRAP STRIP/ CONCRETE INTERFACE.
6. MINIMUM 1/4" DEPTH HILTI FS-ONE MAX INTUMESCENT FIRESTOP SEALANT FLUSH WITH TOP SURFACE OF FLOOR.

NOTES : 1. MAXIMUM DIAMETER OF OPENING = 5".
 2. ANNULAR SPACE = NOMINAL 1/4".
 3. CLOSED OR VENTED PIPING SYSTEM (PVC = SCHEDULE 40, CPVC = SDR 13.5).
 4. SHEET METAL SLEEVE MAY ALSO EXTEND 1/2" BELOW THE FLOOR.



HILTI, Inc.
Plano, Texas USA (800) 879-8000

Sheet	1 of 1
Scale	5/32" = 1"
Date	Jan. 23, 2019

Drawing No.
**CBJ
2012e**