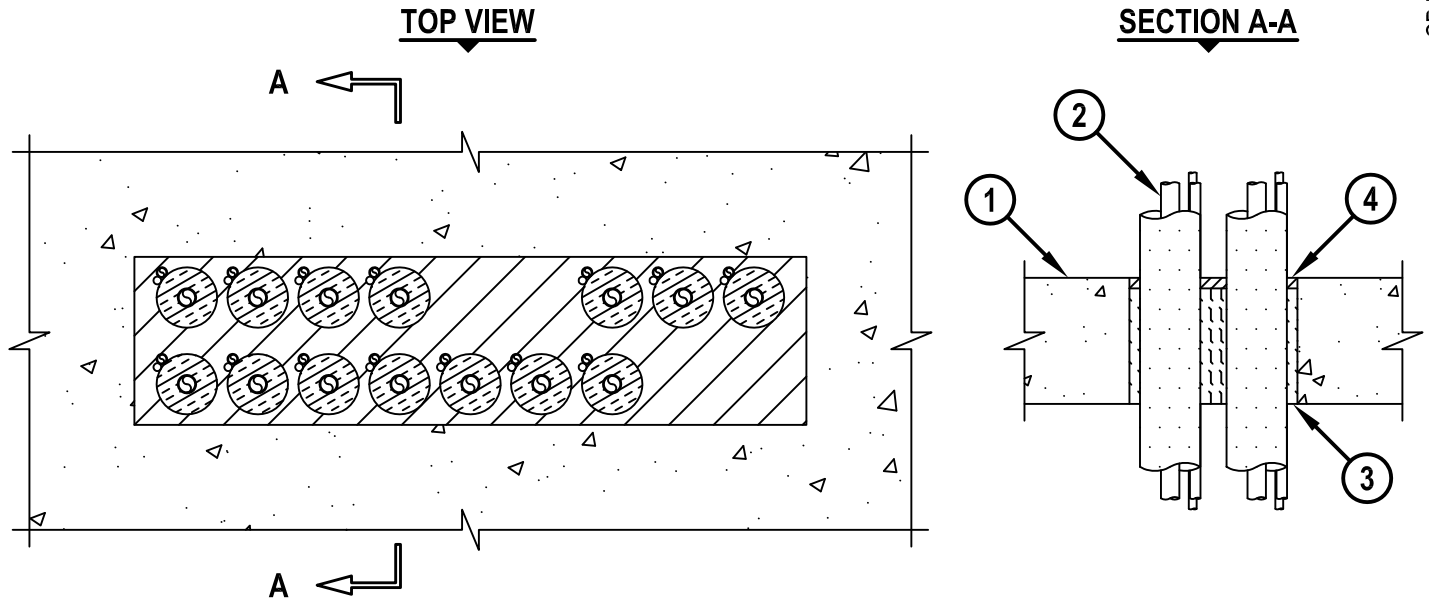


**MULTIPLE HVAC LINE SETS THROUGH CONCRETE FLOOR/WALL OR  
BLOCK WALL ASSEMBLY**

F-RATING = 2-HR.  
T-RATING = 1/2-HR.

CBJ8024b.010615



1. CONCRETE FLOOR OR WALL ASSEMBLY (2-HR. FIRE-RATING) :
  - A. LIGHTWEIGHT OR NORMAL WEIGHT CONCRETE FLOOR (MINIMUM 6" THICK).
  - B. LIGHTWEIGHT OR NORMAL WEIGHT CONCRETE WALL (MINIMUM 6-1/2" THICK).
  - C. ANY UL/cUL CLASSIFIED CONCRETE BLOCK WALL.
2. ONE OR MORE AC LINE SETS INSTALLED WITHIN OPENING. EACH LINE SET SHALL BE TIGHTLY BUNDLED AND CONSIST OF THE FOLLOWING :
  - A. MAXIMUM 1" NOMINAL DIAMETER STEEL OR COPPER PIPE WITH NOMINAL 1" THICK AB/PVC PIPE INSULATION.
  - B. MAXIMUM 3/8" NOMINAL DIAMETER COPPER PIPE OR TUBING.
  - C. MAXIMUM 4 PAIR NO. 18 AWG THERMOSTAT CABLE WITH PVC JACKET.
3. MINIMUM 5-1/2" THICKNESS MINERAL WOOL (MIN. 4 PCF DENSITY) TIGHTLY PACKED.
4. MINIMUM 1/2" DEPTH HILTI FS-ONE MAX OR FS-ONE INTUMESCENT FIRESTOP SEALANT.

**NOTES :** 1. MAXIMUM AREA OF OPENING IS 256 SQ. IN., WITH A MAXIMUM DIMENSION OF 32".  
 2. ANNULAR SPACE = MINIMUM 1/2", MAXIMUM 12".  
 3. MINIMUM 1/2" DEPTH HILTI FS-ONE MAX OR FS-ONE INTUMESCENT FIRESTOP SEALANT IS REQUIRED ON BOTH SIDES OF A WALL ASSEMBLY.



HILTI, Inc.  
Tulsa, Oklahoma USA (800) 879-8000

Sheet	1 of 1
Scale	7/64" = 1"
Date	Jan. 06, 2015

Drawing No.  
**CBJ  
8024b**