

METAL PIPE AND TUB FITTINGS THROUGH CONCRETE FLOOR ASSEMBLY

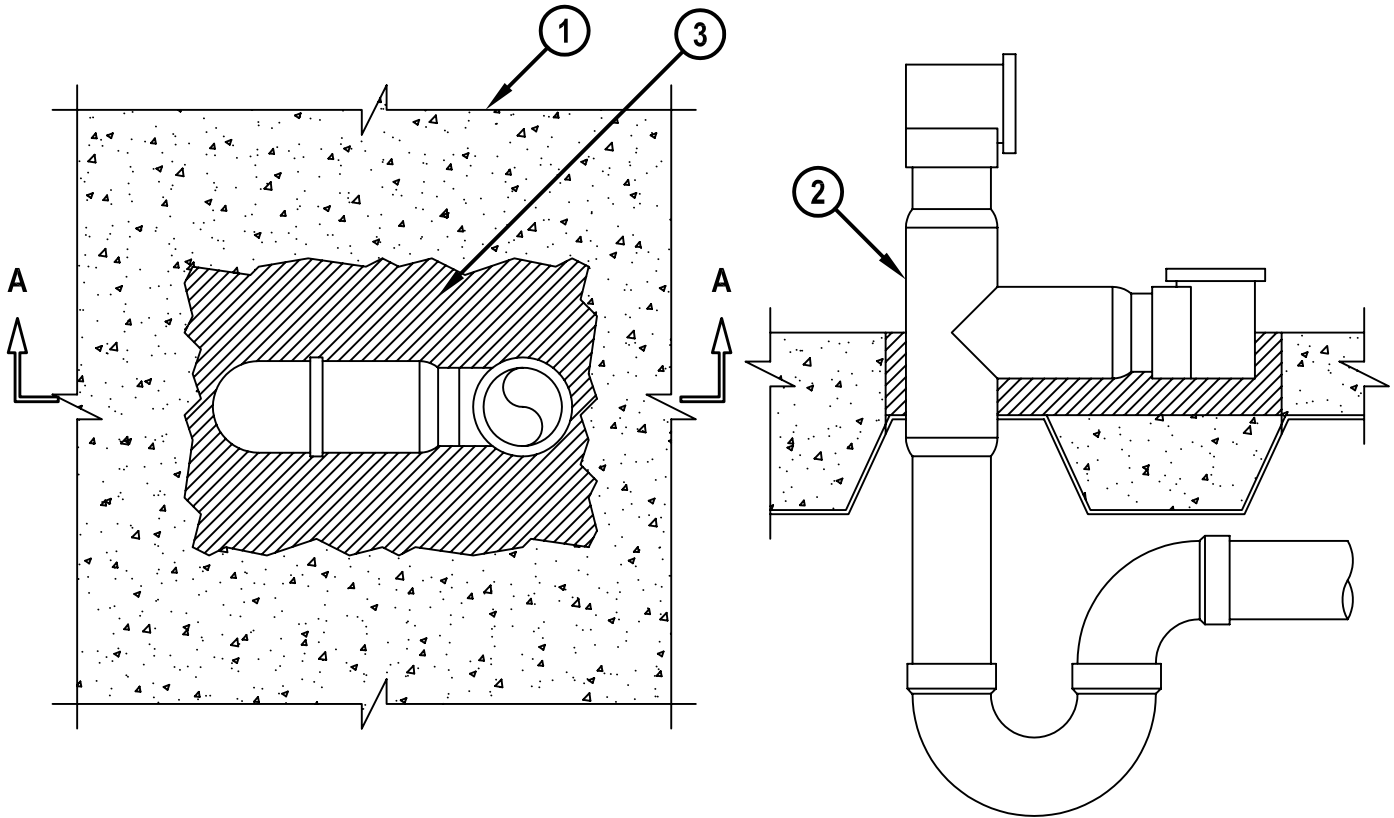
F-RATING = 2-HR.

T-RATING = 0-HR.

FA1051b.040203

TOP VIEW

SECTION A-A



1. LIGHTWEIGHT OR NORMAL WEIGHT CONCRETE (MIN. 2-1/2" THICK) OVER METAL DECK ASSEMBLY (2-HR. FIRE-RATING).
2. MAXIMUM 2" NOMINAL DIAMETER COPPER, BRASS, OR CAST IRON PIPE WASTE/OVERFLOW FITTINGS.
3. MINIMUM 2-1/2" DEPTH HILTI CP 637 FIRESTOP MORTAR.

NOTES : 1. MAXIMUM SIZE OF RECESSED OPENING = 12" x 8-1/2".
 2. MAXIMUM DIAMETER OF CORED OPENING FOR DRAIN PIPE = 4".
 3. ANNULAR SPACE = MINIMUM 0", MAXIMUM 1-7/8".



HILTI, Inc.
 Tulsa, Oklahoma USA (918) 252-6000

Sheet	1 of 1
Scale	1 1/64" = 1"
Date	April 2, 2003

Drawing No.

**FA
1051b**