

CAST IRON FLOOR SINK THROUGH CONCRETE FLOOR ASSEMBLY

F-RATING = 2-HR.

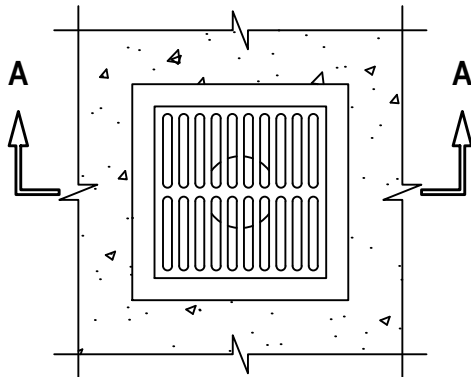
T-RATING = 2-HR.

L-RATING AT AMBIENT = LESS THAN 1 CFM / SQ FT

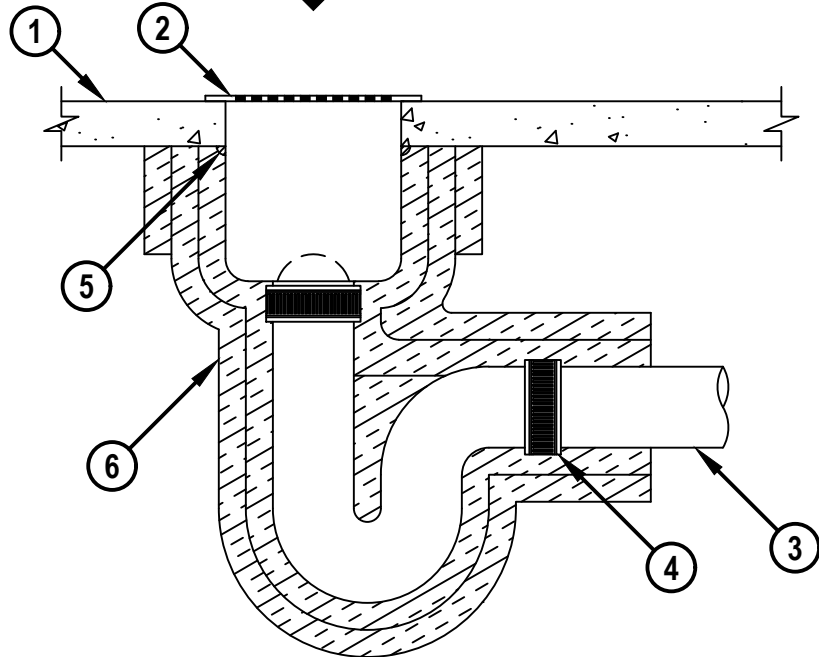
L-RATING AT 400°F = 4 CFM / SQ FT

FA1135d.081519

TOP VIEW



SECTION A-A



1. LIGHTWEIGHT OR NORMAL WEIGHT CONCRETE FLOOR ASSEMBLY (MINIMUM 2-1/2" THICK) (2-HR. FIRE-RATING).
2. MAXIMUM 12" x 12" x 10" DEEP CAST IRON FLOOR SINK CAST OR GROUTED INTO FLOOR. SINK FLANGES TO BEAR ON TOP PLANE OF FLOOR. CAST IRON FLOOR GRATING TO BE INSTALLED ON TOP OF SINK. METAL DOME STRAINER MAY BE USED IN SINK DRAIN.
3. MAXIMUM 4" NOMINAL DIAMETER CAST IRON PIPE SECURED TO OUTLET OF FLOOR SINK WITH NO-HUB COUPLING. PIPE TO BE RIGIDLY SUPPORTED BENEATH FLOOR AWAY FROM FLOOR SINK WITH SUITABLE HANGERS.
4. CORRUGATED STAINLESS STEEL "NO-HUB" CONNECTOR.
5. MINIMUM 1/2" BEAD HILTI FS-ONE MAX OR FS-ONE INTUMESCENT FIRESTOP SEALANT APPLIED AROUND PERIPHERY OF FLOOR SINK AT FLOOR INTERFACE.
6. TWO LAYERS (NOMINAL 1-1/2" THICK) FACED OR UNFACED FIREMASTER FAST WRAP XL, FIREMASTER FASTWRAP+, OR PYROSCAT DUCTWRAP XL (MANUFACTURED BY THERMAL CERAMICS), OR FYREWRAP DUCT INSULATION OR FYREWRAP DUCT 1.5 INSULATION (MANUFACTURED BY UNIFRAX LLC), TIGHTLY WRAPPED AROUND SINK AND DRAIN PIPE. BOTH LAYERS TO EXTEND MINIMUM 24" BEYOND THE BOTTOM SURFACE OF FLOOR AND HELD IN POSITION USING 16 GA. STEEL WIRE TIES SPACED MAXIMUM 8" ON CENTER AND MAXIMUM 1" FROM ENDS OF LAYERS. AN ADDITIONAL LAYER OF DUCT WRAP TO EXTEND MINIMUM 6" BELOW FLOOR AND HELD IN POSITION USING 16 GA. STEEL TIE WIRES SPACED MAXIMUM 1" FROM ENDS OF LAYER.



HILTI, Inc.
Plano, Texas USA (800) 879-8000

Sheet	1 of 1
Scale	3/32" = 1"
Date	Aug. 15, 2019

Drawing No.
**FA
1135d**