

CAST IRON FLOOR SINK THROUGH CONCRETE FLOOR OVER METAL DECKING ASSEMBLY

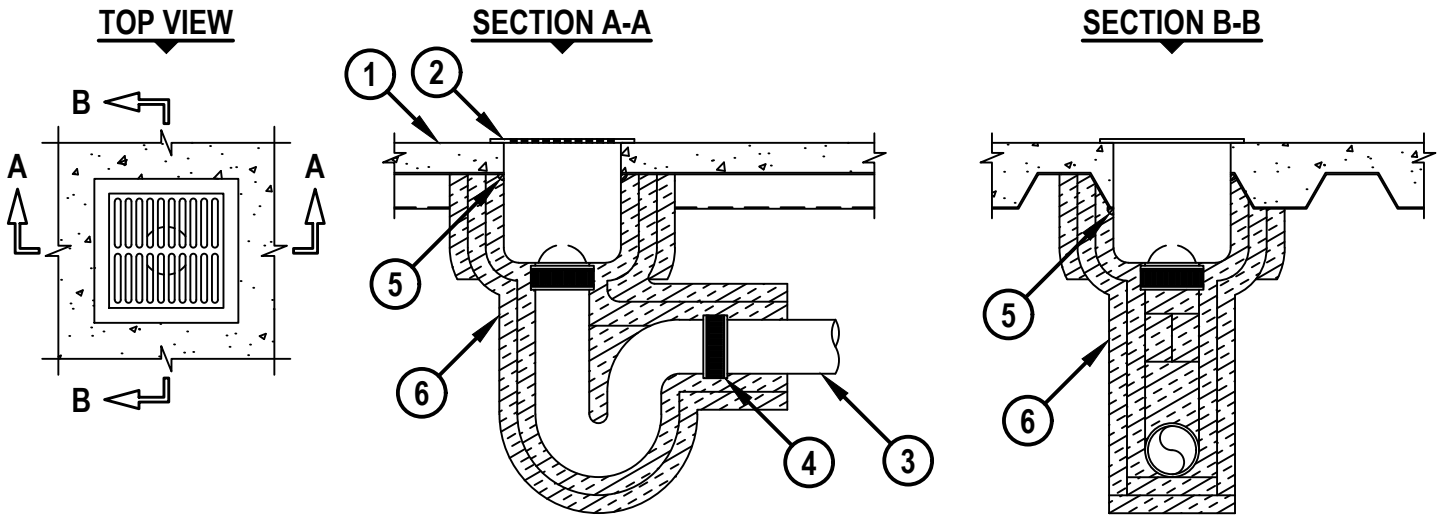
F-RATING = 2-HR.

T-RATING = 2-HR.

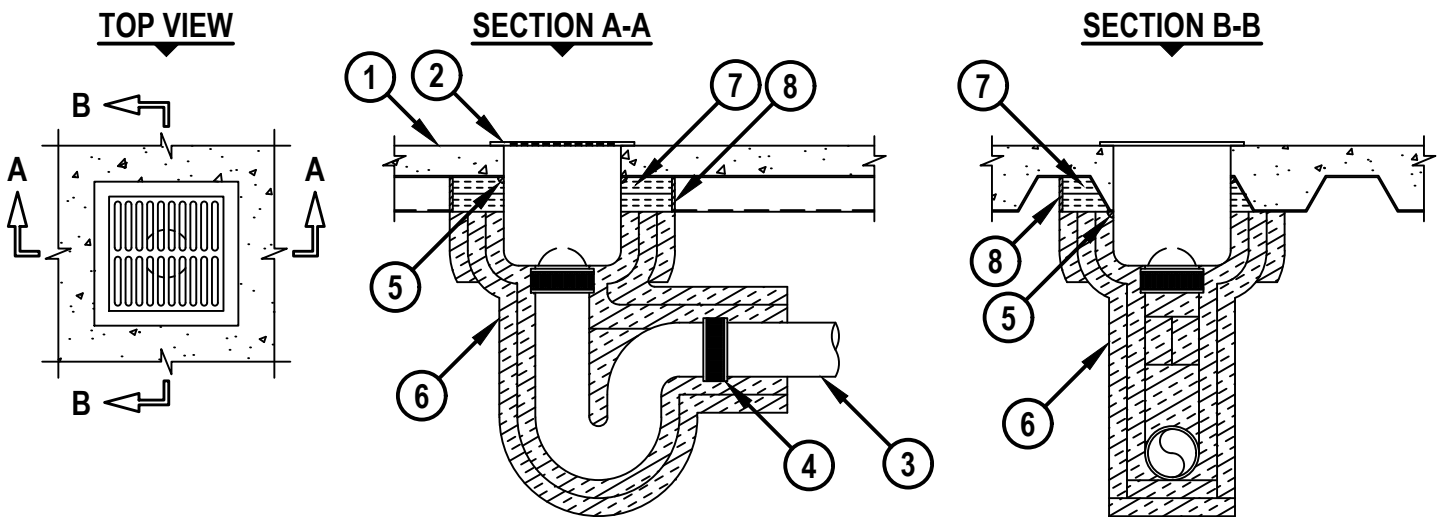
L-RATING AT AMBIENT = LESS THAN 1 CFM / SQ FT

L-RATING AT 400°F = 4 CFM / SQ FT

FA1137d.081519



CONFIGURATION A



CONFIGURATION B



HILTI, Inc.
Plano, Texas USA (800) 879-8000

Sheet	1 of 2
Scale	1/16" = 1"
Date	Aug. 15, 2019

Drawing No.
**FA
1137d**

CAST IRON FLOOR SINK THROUGH CONCRETE FLOOR OVER METAL DECKING ASSEMBLY

F-RATING = 2-HR.

T-RATING = 2-HR.

L-RATING AT AMBIENT = LESS THAN 1 CFM / SQ FT

L-RATING AT 400°F = 4 CFM / SQ FT

FA1137d.081519

1. STEEL FLOOR UNIT/FLOOR ASSEMBLY (UL D700 OR D900 SERIES) - LIGHTWEIGHT OR NORMAL WEIGHT CONCRETE (MINIMUM 2-1/2" THICK) (2-HR. FIRE-RATING).
2. MAXIMUM 12" x 12" x 10" DEEP CAST IRON FLOOR SINK CAST OR GROUTED INTO FLOOR. SINK FLANGES TO BEAR ON TOP PLANE OF FLOOR. CAST IRON FLOOR GRATING TO BE INSTALLED ON TOP OF SINK. METAL DOME STRAINER MAY BE USED IN SINK DRAIN.
3. MAXIMUM 4" NOMINAL DIAMETER CAST IRON PIPE SECURED TO OUTLET OF FLOOR SINK WITH NO-HUB COUPLING. PIPE TO BE RIGIDLY SUPPORTED BENEATH FLOOR AWAY FROM FLOOR SINK WITH SUITABLE HANGERS.
4. CORRUGATED STAINLESS STEEL "NO-HUB" CONNECTOR.
5. MINIMUM 1/2" BEAD HILTI FS-ONE MAX OR FS-ONE INTUMESCENT FIRESTOP SEALANT APPLIED AROUND PERIPHERY OF FLOOR SINK AT FLOOR INTERFACE.

CONFIGURATION A

6. TWO LAYERS (NOMINAL 1-1/2" THICK) FACED OR UNFACED FIREMASTER FAST WRAP XL, FIREMASTER FASTWRAP+, OR PYROSCAT DUCTWRAP XL (MANUFACTURED BY THERMAL OR FYREWAP DUCT INSULATION OR FYREWAP DUCT 1.5 INSULATION (MANUFACTURED BY UNIFRAX LLC), TIGHTLY WRAPPED AROUND SINK AND DRAIN PIPE. TOP ENDS OF BOTH LAYERS TO BE CUT TO THE CONTOUR OF THE FLUTED DECK AND EXTEND MINIMUM 24" BEYOND THE BOTTOM SURFACE OF FLOOR AND HELD IN POSITION USING 16 GA. STEEL WIRE TIES SPACED MAXIMUM 8" ON CENTER AND MAXIMUM 1" FROM ENDS OF LAYERS. AN ADDITIONAL LAYER OF DUCT WRAP CUT TO THE CONTOUR OF THE FLUTED DECK AND EXTEND MINIMUM 6" BELOW FLOOR AND HELD IN POSITION USING 16 GA. STEEL TIE WIRES SPACED MAXIMUM 1" FROM ENDS OF LAYER.

CONFIGURATION B

6. TWO LAYERS (NOMINAL 1-1/2" THICK) FACED OR UNFACED FIREMASTER FAST WRAP XL, FIREMASTER FASTWRAP+, OR PYROSCAT DUCTWRAP XL (MANUFACTURED BY THERMAL OR FYREWAP DUCT INSULATION OR FYREWAP DUCT 1.5 INSULATION (MANUFACTURED BY UNIFRAX LLC), TIGHTLY WRAPPED AROUND SINK AND DRAIN PIPE AND EXTEND MINIMUM 24" BEYOND THE BOTTOM SURFACE OF FLOOR AND HELD IN POSITION USING 16 GA. STEEL WIRE TIES SPACED MAXIMUM 8" ON CENTER AND MAXIMUM 1" FROM ENDS OF LAYERS. AN ADDITIONAL LAYER OF DUCT WRAP TO EXTEND MINIMUM 6" BELOW FLOOR AND HELD IN POSITION USING 16 GA. STEEL TIE WIRES SPACED MAXIMUM 1" FROM ENDS OF LAYER.
7. ADDITIONAL PIECES OF (NOMINAL 1-1/2" THICK) FACED OR UNFACED FIREMASTER FAST WRAP XL, FIREMASTER FASTWRAP+, OR PYROSCAT DUCTWRAP XL (MANUFACTURED BY THERMAL OR FYREWAP DUCT INSULATION OR FYREWAP DUCT 1.5 INSULATION (MANUFACTURED BY UNIFRAX LLC), CUT TO CONTOUR OF FLUTE AND FRICTION FIT TO FILL THE SPACE BETWEEN THE DUCT WRAP LAYERS (ITEM NO. 6) AND FLUTED DECK. RECESS INSULATION TO ACCOMMODATE FIRESTOP SEALANT.
8. MINIMUM 1/4" DEPTH HILTI FS-ONE MAX OR FS-ONE INTUMESCENT FIRESTOP SEALANT APPLIED OVER THE DUCT WRAP WITHIN FLUTED AREA FLUSH WITH OUTER LAYER.



Hilti Firestop Systems

HILTI, Inc.
Plano, Texas USA (800) 879-8000

Sheet	2 of 2
Scale	-
Date	Aug. 15, 2019

Drawing No.

**FA
1137d**