

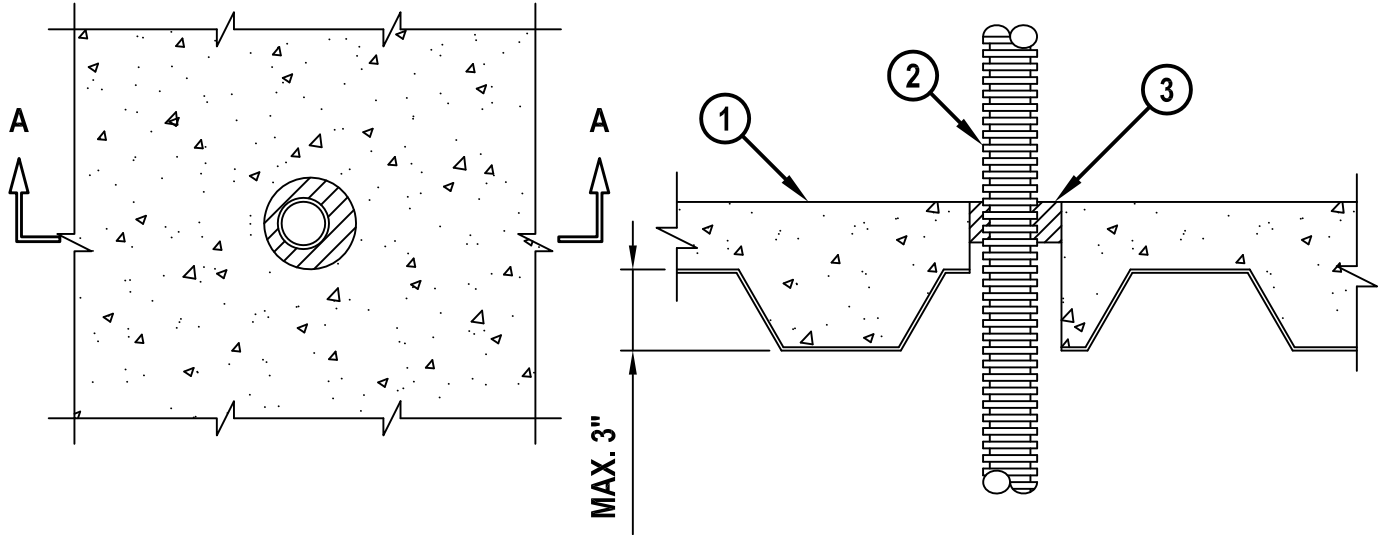
OPTICAL FIBER RACEWAY THROUGH CONCRETE FLOOR OVER METAL DECKING

F-RATING = 2-HR.
T-RATING = 0-HR.

FA2046c.013115

TOP VIEW

SECTION A-A



1. NORMAL WEIGHT CONCRETE FLOOR (MIN. 2-1/2" THICK) OVER METAL DECKING (2-HR. FIRE-RATING).
2. MAXIMUM 1-1/2" NOMINAL DIAMETER OPTICAL FIBER RACEWAY (INNERDUCT) (CLOSED PIPING SYSTEM).
3. MINIMUM 1-1/2" DEPTH HILTI FS-ONE MAX OR FS-ONE INTUMESCENT FIRESTOP SEALANT.

NOTES : 1. MAXIMUM DIAMETER OF OPENING = 3".
2. ANNULAR SPACE = MINIMUM 1/2", MAXIMUM 1".



HILTI, Inc.
Tulsa, Oklahoma USA (800) 879-8000

Sheet	1 of 1
Scale	9/64" = 1"
Date	Jan. 31, 2015

Drawing No.
**FA
2046c**