

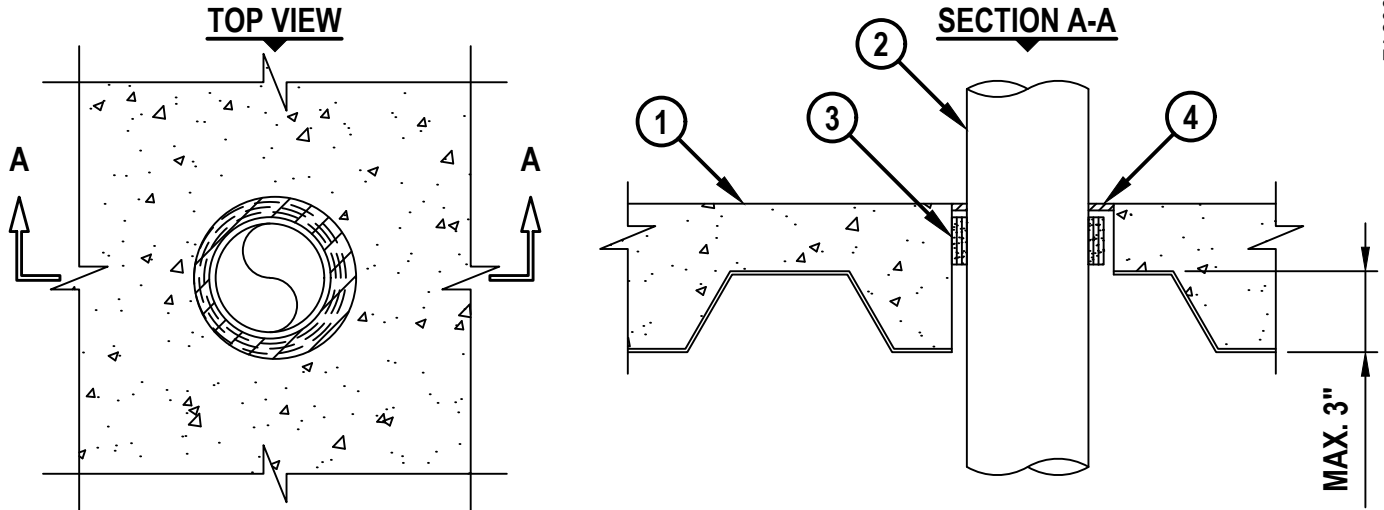
PLASTIC PIPE THROUGH CONCRETE FLOOR OVER METAL DECKING ASSEMBLY

F-RATING = 2-HR.

T-RATING = 1/4-HR.

W-RATING = CLASS I (SEE NOTE NO. 2 BELOW)

FA2067h.101017



1. LIGHTWEIGHT OR NORMAL WEIGHT CONCRETE FLOOR (MINIMUM 2-1/2" THICK) OVER METAL DECKING (2-HR. FIRE-RATING).
2. PENETRATING ITEM TO BE ONE OF THE FOLLOWING :
 - A. MAXIMUM 4" NOMINAL DIAMETER PVC PLASTIC PIPE (CELLULAR OR SOLID CORE).
 - B. MAXIMUM 4" NOMINAL DIAMETER ABS PLASTIC PIPE (CELLULAR OR SOLID CORE).
 - C. MAXIMUM 4" NOMINAL DIAMETER CPVC PLASTIC PIPE (CLOSED PIPING SYSTEM ONLY).
 - D. MAXIMUM 4" NOMINAL DIAMETER FRPP PLASTIC PIPE.
3. HILTI CP 648E WRAP STRIP (NOMINAL 3/16" THICK x 1-3/4" WIDE) CONTINUOUSLY WRAPPED AROUND THE OUTER CIRCUMFERENCE OF THE PIPE, AS SPECIFIED IN TABLE BELOW, WITH ENDS BUTTED AND HELD IN PLACE WITH TAPE. WRAP STRIP TO BE SLID INTO THE ANNULAR SPACE AND POSITIONED 1/4" ABOVE CRESTS OF THE STEEL FLOOR UNIT.
4. MINIMUM 1/4" DEPTH HILTI FS-ONE MAX INTUMESCENT FIRESTOP SEALANT, HILTI CFS-S SIL GG FIRESTOP SILICONE SEALANT, OR HILTI CFS-S SIL SL FIRESTOP SILICONE SEALANT.

NOMINAL PIPE DIAMETER	MAXIMUM DIAMETER OF OPENING	NO. OF LAYERS OF CP 648E	ANNULAR SPACE	
			MINIMUM	MAXIMUM
2"	3"	1	3/16"	7/16"
3"	4-1/2"	2	3/8"	5/8"
4"	6"	3	9/16"	15/16"

NOTES : 1. CLOSED OR VENTED PIPING SYSTEM (PVC, ABS, FRPP = SCHEDULE 40; CPVC = SDR 13.5).
 2. W-RATING APPLIES ONLY WHEN HILTI CFS-S SIL GG FIRESTOP SILICONE FIRESTOP SEALANT OR HILTI CFS-S SIL SL FIRESTOP SILICONE SEALANT IS USED.



HILTI, Inc.
 Plano, Texas USA (800) 879-8000

Sheet 1 of 1
 Scale 9/64" = 1"
 Date Oct. 10, 2017

Drawing No.

**FA
 2067h**