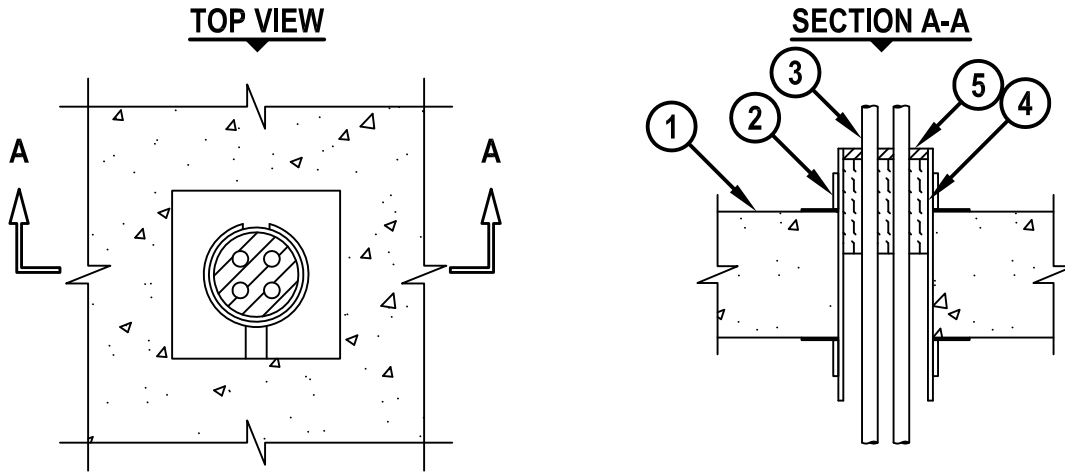


CABLES THROUGH "UNIQUE FIRESTOP SLEEVE" IN CONCRETE FLOOR ASSEMBLY

F-RATING = 3-HR.
T-RATING = 0-HR.

FA3019a.061708



1. CONCRETE FLOOR OR WALL ASSEMBLY (3-HR. FIRE-RATING) :
 - A. LIGHTWEIGHT OR NORMAL WEIGHT CONCRETE FLOOR (MINIMUM 6" THICK).
 - B. ANY UL/cUL CLASSIFIED PRECAST (HOLLOW-CORE) CONCRETE FLOOR (MINIMUM 6" THICK).
2. UNIQUE FIRESTOP PRODUCTS, DIVISION OF "IT'S UNIQUE" INC. SPLIT SLEEVE OR THREADED SLEEVE (1", 2", AND 4" SIZES).
3. CABLES TO BE ANY COMBINATION OF THE FOLLOWING :
 - A. MAXIMUM 200 PAIR NO. 24 AWG (OR SMALLER) TELEPHONE CABLE WITH PVC JACKET.
 - B. MAXIMUM 1/C - 750 KCMIL POWER CABLE WITH COPPER CONDUCTORS WITH XLPE JACKET.
 - C. MAXIMUM 3/C NO. 3/0 AWG (OR SMALLER) ALUMINUM OR COPPER CONDUCTOR SERVICE ENTRANCE CABLE WITH PVC JACKET.
 - D. MAXIMUM 3/C NO. 8 AWG (OR SMALLER) NONMETALLIC SHEATHED (ROMEX) CABLE WITH PVC JACKET.
 - E. MAXIMUM 7/C NO. 2/0 AWG (OR SMALLER) MULTICONDUCTOR POWER AND CONTROL CABLES WITH XLPE OR PVC JACKET.
 - F. MAXIMUM RG/U (OR SMALLER) COAXIAL CABLE WITH FLUORINATED ETHYLENE JACKET.
 - G. MAXIMUM 62.5/48 FIBER OPTIC CABLE WITH PVC JACKET.
 - H. MAXIMUM 4 PAIR NO. 24 AWG (OR SMALLER) COPPER CONDUCTOR DATA CABLE WITH HYLAR JACKET.
4. MINIMUM 3" THICKNESS MINERAL WOOL (MIN. 4 PCF DENSITY) TIGHTLY PACKED WITH MINIMUM 2" EXTENDING BELOW TOP SURFACE OF FLOOR.
5. MINIMUM 1/2" DEPTH HILTI CP 618 FIRESTOP PUTTY.

NOTES : 1. MAXIMUM DIAMETER OF OPENING = FOR 1", 2", AND 4" SIZES ARE 1-1/4", 2-7/16", AND 4-1/2", RESPECTIVELY.
2. CABLES TO FILL MINIMUM 8% TO MAXIMUM 48% OF CROSS-SECTIONAL AREA OF OPENING.



HILTI, Inc.
Tulsa, Oklahoma USA (800) 879-8000

Sheet	1 of 1
Scale	7/64" = 1"
Date	June 17, 2008

Drawing No.
**FA
3019a**