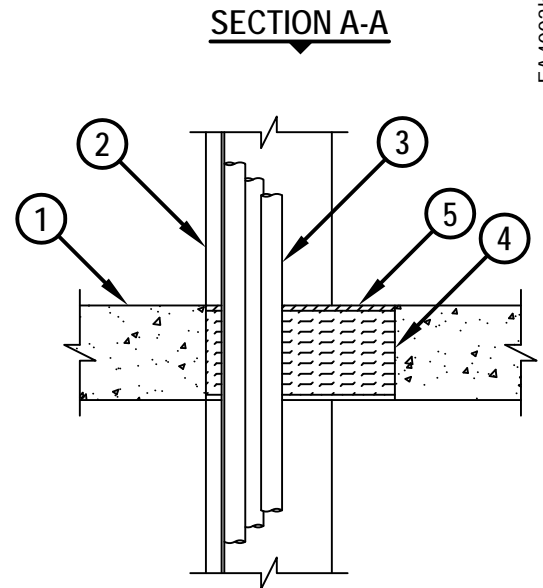
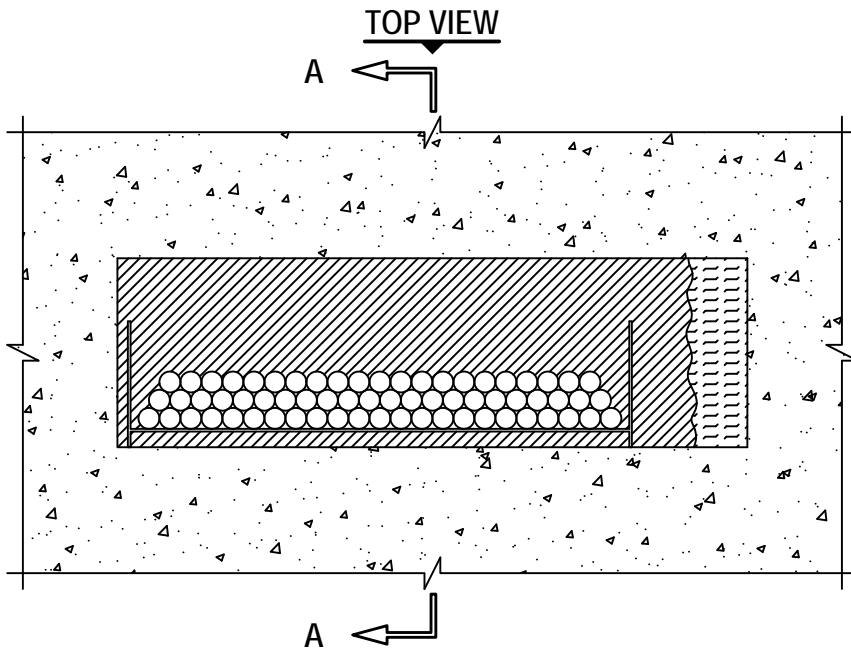


CABLE TRAY THROUGH CONCRETE FLOOR ASSEMBLY

F-RATING = 2-HR.

T-RATING = 0-HR.

FA4003b.122013



1. LIGHTWEIGHT OR NORMAL WEIGHT CONCRETE FLOOR ASSEMBLY (MINIMUM 4-1/2" THICK) (2-HR. FIRE-RATING).
2. MAXIMUM 24" x 6", ALUMINUM OR STEEL, OPEN LADDER CABLE TRAY.
3. CABLES TO CONSIST OF ANY OF THE FOLLOWING :
 - A. MAXIMUM 300 PAIR NO. 24 AWG TELEPHONE CABLE WITH PVC JACKET.
 - B. MAXIMUM 500 KCMIL POWER CABLE WITH PVC JACKET.
 - C. MAXIMUM 1/2" DIAMETER FIBER-OPTIC CABLE (MAXIMUM 24 FIBER) WITH PVC JACKET.
 - D. MAXIMUM 3/C NO. 12 AWG STEEL-CLAD CABLE.
 - E. MAXIMUM 7/C NO. 12 AWG POWER CABLE WITH PVC JACKET.
4. MINIMUM 4" THICKNESS MINERAL WOOL (MIN. 4 PCF DENSITY) TIGHTLY PACKED AND RECESSED TO ACCOMMODATE FIRESTOP SEALANT.
5. MINIMUM 1/4" DEPTH HILTI CP 604 SELF-LEVELING FIRESTOP SEALANT, HILTI CFS-S SIL GG FIRESTOP SILICONE SEALANT, OR HILTI CFS-S SIL SL FIRESTOP SILICONE SEALANT FLUSH WITH TOP SURFACE OF FLOOR.

NOTES : 1. MAXIMUM SIZE OF OPENING = 30" x 9".
 2. ANNULAR SPACE = MINIMUM 0", MAXIMUM 6".
 3. CABLES TO FILL MAXIMUM 67% OF CROSS-SECTIONAL AREA OF CABLE TRAY.



HILTI, Inc.
 Tulsa, Oklahoma USA (800) 879-8000

Sheet	1 of 1
Scale	7/64" = 1"
Date	Dec. 20, 2013

Drawing No.
**FA
 4003b**