

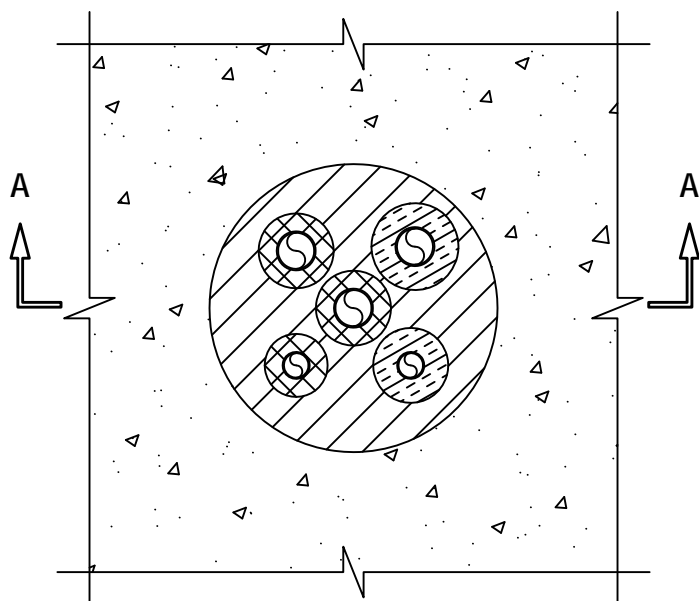
MULTIPLE INSULATED PIPE THROUGH CONCRETE FLOOR ASSEMBLY

F-RATING = 2-HR.

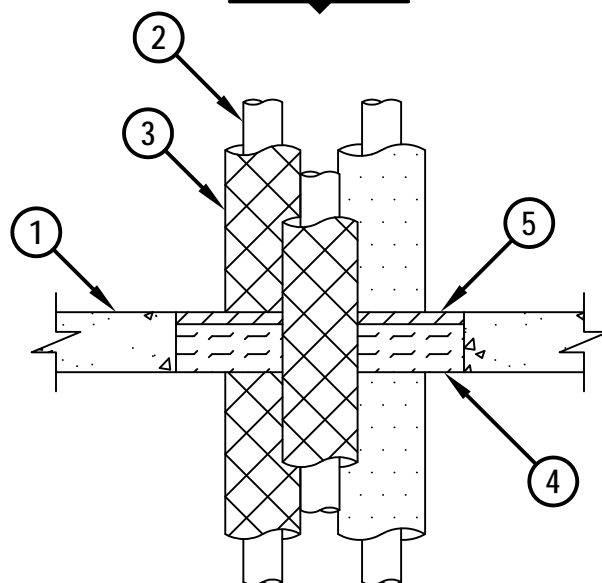
T-RATING = 1/2-HR. OR 1-HR.

FA5036b.122013

TOP VIEW



SECTION A-A



1. LIGHTWEIGHT OR NORMAL WEIGHT CONCRETE FLOOR ASSEMBLY (MINIMUM 2-1/2" THICK) (2-HR. FIRE-RATING).
2. ANY COMBINATION OF THE FOLLOWING PIPES MAY BE INSTALLED WITH THE OPENING (MAX. QTY. = 5) :
 - A. MAXIMUM 1-1/2" NOMINAL DIAMETER STEEL PIPE (SCHEDULE 10 OR HEAVIER).
 - B. MAXIMUM 1-1/2" NOMINAL DIAMETER CAST OR DUCTILE IRON PIPE.
 - C. MAXIMUM 1-1/2" NOMINAL DIAMETER COPPER PIPE OR TUBING.
3. ONE OF THE FOLLOWING PIPE COVERINGS TO BE USED ON EACH PIPE :
 - A. NOMINAL 1" THICK GLASS-FIBER PIPE INSULATION.
 - B. NOMINAL 3/4" THICK AB/PVC PIPE INSULATION ON PIPES NOMINAL 1" DIAMETER OR SMALLER ONLY.
4. MINIMUM 2" THICKNESS MINERAL WOOL (MIN. 4 PCF DENSITY) TIGHTLY PACKED.
5. MINIMUM 1/2" DEPTH HILTI CP 604 SELF LEVELING FIRESTOP SEALANT, HILTI CFS-S SIL GG FIRESTOP SILICONE SEALANT, OR HILTI CFS-S SIL SL FIRESTOP SILICONE SEALANT FLUSH WITH TOP SURFACE OF FLOOR.

NOTES : 1. MAXIMUM DIAMETER OF OPENING = 12".
 2. ANNULAR SPACE BETWEEN INSULATED PIPES = MINIMUM 1/4", MAXIMUM 2".
 3. ANNULAR SPACE BETWEEN GLASS-FIBER INSULATED PIPE AND PERIPHERY OF OPENING = MINIMUM 1/4", MAXIMUM 2".
 4. ANNULAR SPACE BETWEEN AB/PVC INSULATED PIPE AND PERIPHERY OF OPENING = MINIMUM 1/2", MAXIMUM 2".



HILTI, Inc.
 Tulsa, Oklahoma USA (800) 879-8000

Sheet	1 of 1
Scale	1/8" = 1"
Date	Dec. 20, 2013

Drawing No.

**FA
5036b**