

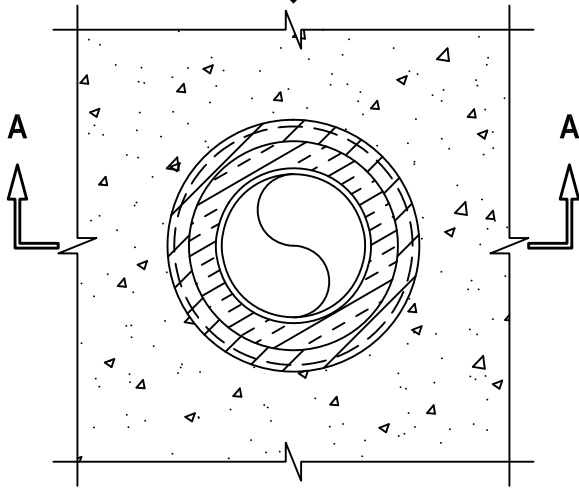
INSULATED METAL PIPE THROUGH CONCRETE FLOOR ASSEMBLY

F-RATING = 2-HR.

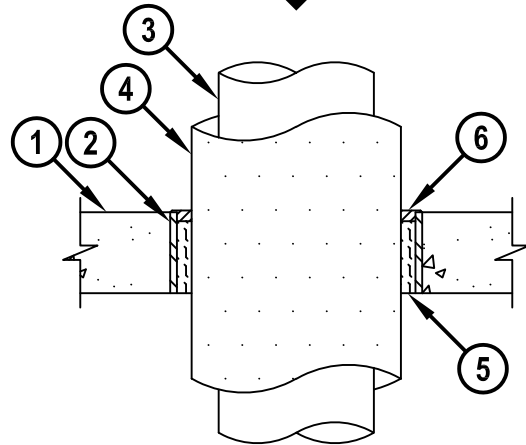
T-RATING = 0-HR. AND 3/4-HR.

W-RATING - CLASS I (SEE NOTES NO. 5 AND NO. 6 BELOW)

TOP VIEW



SECTION A-A



FA5042e.101216

1. LIGHTWEIGHT OR NORMAL WEIGHT CONCRETE FLOOR ASSEMBLY (MINIMUM 4-1/2" THICK) (2-HR. FIRE-RATING).
2. [OPTIONAL] MAXIMUM 14" STEEL PIPE SLEEVE (SCHEDULE 10 OR HEAVIER).
3. PENETRATING ITEM TO BE ANY ONE OF THE FOLLOWING :
 - A. MAXIMUM 8" NOMINAL DIAMETER STEEL PIPE (SCHEDULE 10 OR HEAVIER).
 - B. MAXIMUM 8" NOMINAL DIAMETER CAST OR DUCTILE IRON PIPE.
 - C. MAXIMUM 4" NOMINAL DIAMETER COPPER PIPE.
4. MAXIMUM 1-1/2" THICK GLASS-FIBER PIPE INSULATION.
5. MINIMUM 4" THICKNESS MINERAL WOOL (MIN. 4 PCF DENSITY) TIGHTLY PACKED.
6. MINIMUM 1/2" DEPTH HILTI CFS-S SIL GG FIRESTOP SILICONE SEALANT OR HILTI CFS-S SIL SL FIRESTOP SILICONE SEALANT.

NOTES :

1. MAXIMUM DIAMETER OF OPENING = 14-1/2".
2. ANNULAR SPACE FOR STEEL AND IRON PIPE = MINIMUM 1/2", MAXIMUM 2".
3. ANNULAR SPACE FOR COPPER PIPE = MINIMUM 1/4", MAXIMUM 2-5/8".
4. WHEN STEEL SLEEVE IS USED, HILTI CFS-S SIL GG FIRESTOP SILICONE SEALANT OR HILTI CFS-S SIL SL FIRESTOP SILICONE SEALANT TO OVERLAP TOP EDGE OF STEEL SLEEVE.
5. FOR W-RATING, AN ADDITIONAL PVC JACKET (48" WIDE x 20 OR 30 MIL THICK) MUST BE INSTALLED AT A POINT 36" TO 40" ABOVE THE TOP SURFACE OF THE FLOOR, EXTENDING DOWN INTO OR THROUGH THE OPENING.
6. FOR W-RATING, WHEN STEEL SLEEVE IS USED, HILTI CFS-S SIL GG FIRESTOP SILICONE SEALANT OR HILTI CFS-S SIL SL FIRESTOP SILICONE SEALANT TO OVERLAP TOP EDGE OF STEEL SLEEVE AND EXTEND A MINIMUM 1/2" PAST OUTER EDGE OF SLEEVE.



HILTI, Inc.
Plano, Texas USA (800) 879-8000

Sheet	1 of 1
Scale	3/32" = 1"
Date	Oct. 12, 2016

Drawing No.
FA 5042e