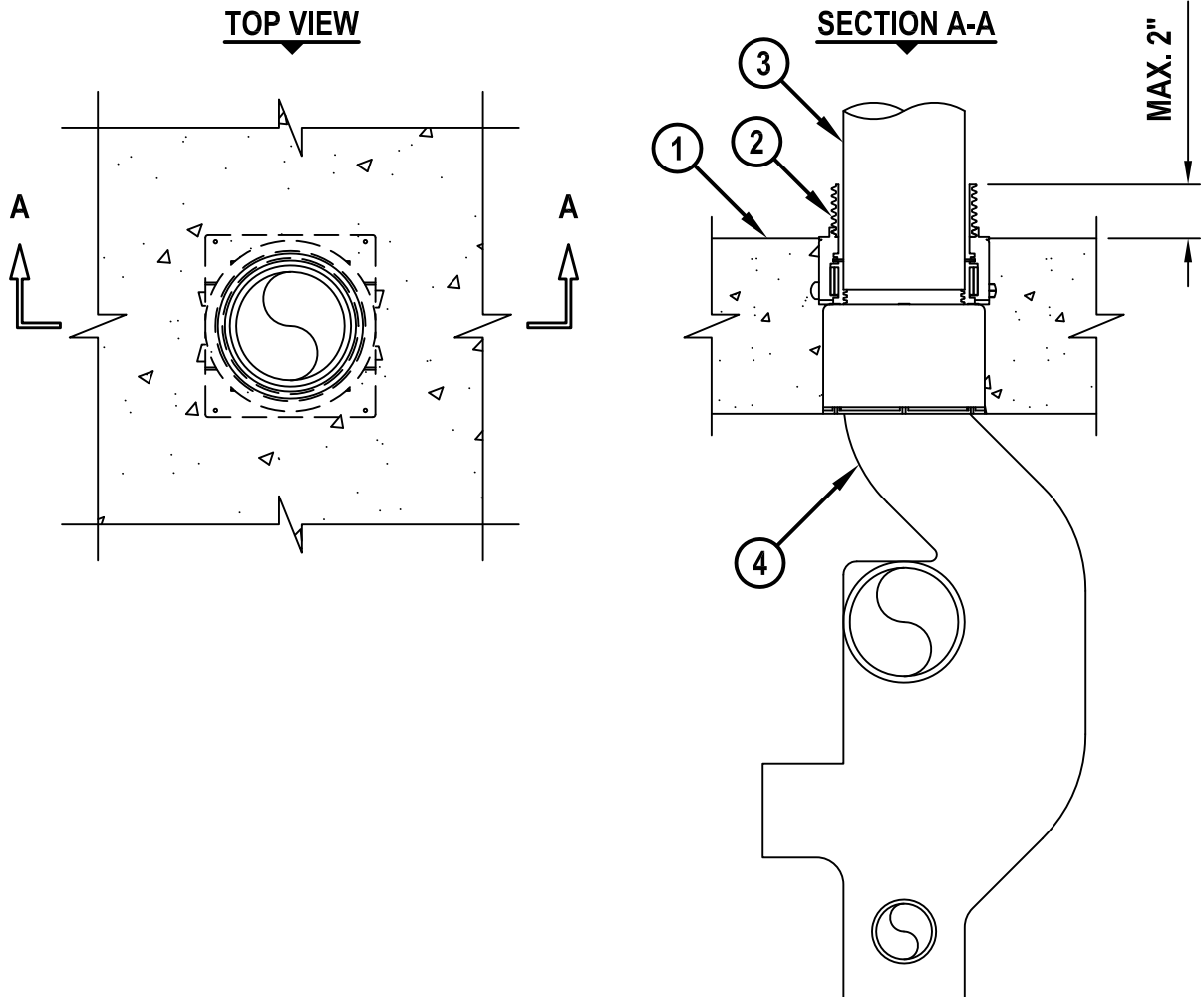


**AERATOR FITTING WITH STEEL OR CAST IRON DRAIN THROUGH  
CONCRETE FLOOR ASSEMBLY**

F-RATING = 3-HR.  
T-RATING = 1/2-HR.

FB1009e.071415



1. LIGHTWEIGHT OR NORMAL WEIGHT CONCRETE FLOOR ASSEMBLY (MINIMUM 5" OR 6-1/2" THICK) (3-HR. FIRE-RATING) (SEE NOTE BELOW).
2. HILTI CP 680-M [3" or 4"], CP 680-P [3" OR 4"], OR CP 680-PX [3"] CAST-IN FIRESTOP DEVICE, THREADED ONTO HILTI AERATOR ADAPTER AND CAST OR GROUTED INTO CONCRETE FLOOR.
3. PENETRATING ITEM TO BE ONE OF THE FOLLOWING :
  - A. NOMINAL 3" OR 4" DIAMETER STEEL PIPE (SCHEDULE 40 OR HEAVIER).
  - B. NOMINAL 3" OR 4" DIAMETER CAST OR DUCTILE IRON PIPE.
4. NOMINAL 3" OR 4" DIAMETER CAST IRON AERATOR FITTING. FITTING SHALL NOT PENETRATE THE FIRESTOP DEVICE.

**NOTE : 4" AERATOR ADAPTER REQUIRES MINIMUM 6-1/2" FLOOR THICKNESS FOR CORRECT INSTALLATION.**



HILTI, Inc.  
Tulsa, Oklahoma USA (800) 879-8000

Sheet	1 of 1
Scale	9/64" = 1"
Date	July 14, 2015

Drawing No.

**FB  
1009e**