

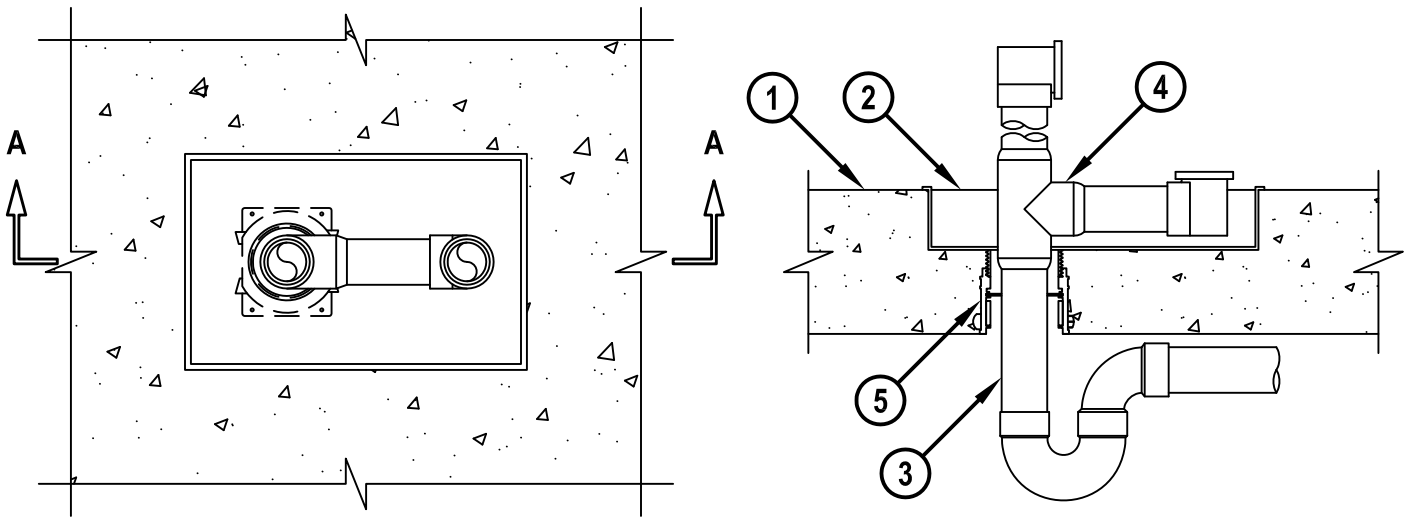
**TUB BOX AND WASTE/OVERFLOW FITTINGS THROUGH CONCRETE FLOOR  
OR CONCRETE OVER METAL DECKING**

F-RATING = 3-HR.  
T-RATING = 3-HR.

FB2007d.071715

**TOP VIEW**

**SECTION A-A**



1. CONCRETE FLOOR ASSEMBLY (3-HR. FIRE-RATING) :
  - A. LIGHTWEIGHT OR NORMAL WEIGHT CONCRETE FLOOR (MINIMUM 6" THICK).
  - B. STEEL FLOOR UNIT/FLOOR ASSEMBLY - LIGHTWEIGHT OR NORMAL WEIGHT CONCRETE FLOOR (MINIMUM 6" THICK) OVER METAL DECKING.
2. MAXIMUM 8-1/2" x 13-3/4" x 2-1/2" DEEP, PVC TUB BOX, WITH ADJUSTABLE LEGS, CAST IN CONCRETE SLAB, FLUSH WITH TOP SURFACE OF FLOOR (SEE NOTE NO. 1 BELOW).
3. NOMINAL 1-1/2" OR 2" DIAMETER PVC PLASTIC PIPE (SCHEDULE 40) AND DRAIN FITTINGS CEMENTED TOGETHER.
4. NOMINAL 1-1/2" DIAMETER PVC PLASTIC WASTE/OVERFLOW FITTINGS.
5. HILTI CP 680-P 2" OR CP 680-PX 2" CAST-IN FIRESTOP DEVICE CAST OR GROUTED INTO CONCRETE FLOOR.

**NOTES :** 1. AS AN ALTERNATE TO USING THE PVC TUB BOX, A MAXIMUM 8-1/2" x 13-3/4" x 2-1/2" DEEP OPENING MAY BE FORMED INTO CONCRETE USING RIGID MATERIALS.  
2. FOR CONCRETE FLOOR OVER METAL DECKING APPLICATIONS, A METAL DECK ADAPTER KIT IS REQUIRED.



HILTI, Inc.  
Plano, Texas USA (800) 879-8000

Sheet	1 of 1
Scale	1/8" = 1"
Date	July 17, 2015

Drawing No.

**FB  
2007d**