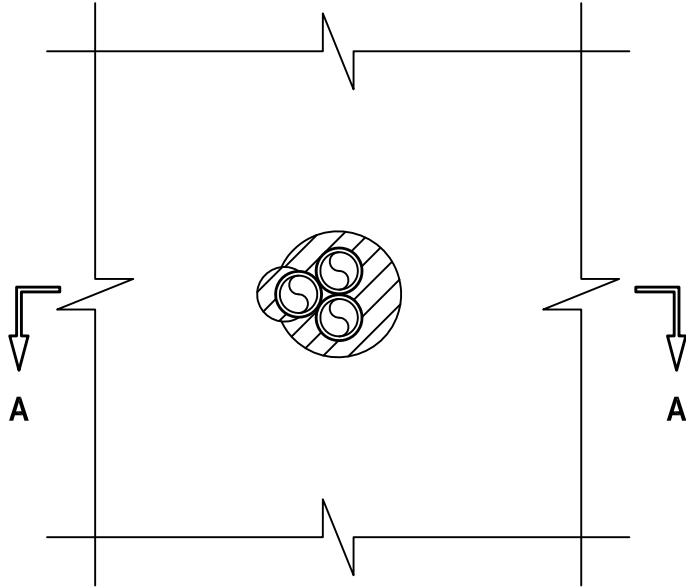


**FLEXIBLE STEEL CONDUIT THROUGH WOOD FLOOR/CEILING ASSEMBLY**

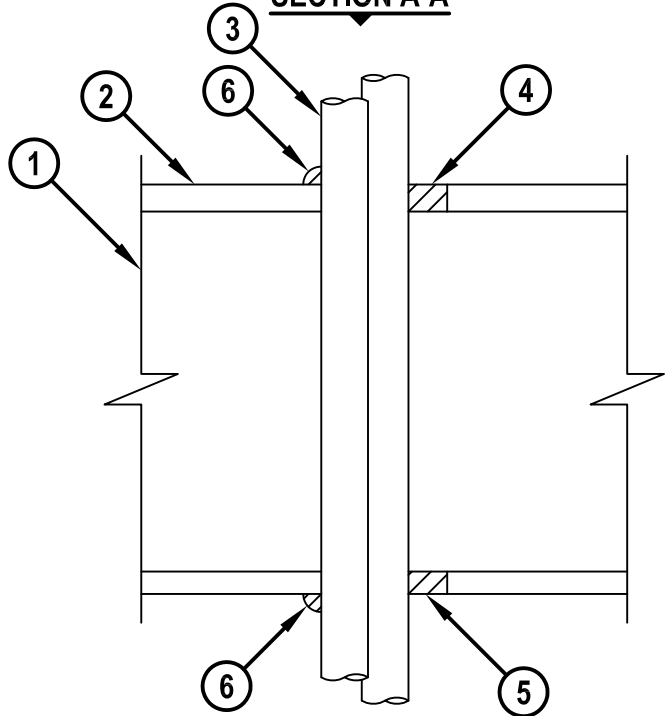
F-RATING = 1-HR.  
T-RATING = 1-HR.

FC1147b.012415

**BOTTOM VIEW**



**SECTION A-A**



1. WOOD FLOOR/CEILING ASSEMBLY (UL/cUL CLASSIFIED L500 SERIES) (1-HR. FIRE-RATING).
2. LUMBER OR PLYWOOD SUBFLOOR WITH FINISH FLOOR OF LUMBER, PLYWOOD, OR FLOOR TOPPING MIXTURE.
3. PENETRATING ITEMS TO BE ANY OF THE FOLLOWING (MAX. QTY. = 3) :
  - A. MAXIMUM 1" NOMINAL DIAMETER FLEXIBLE STEEL CONDUIT.
  - B. MAXIMUM 1" NOMINAL DIAMETER FLEXIBLE STEEL GAS PIPING (WITH OR WITHOUT PLASTIC COVERING) MANUFACTURED BY OMEGA FLEX INC., TITEFLEX CORP., OR WARD MFG. INC.
4. MINIMUM 3/4" DEPTH HILTI CP 606 FLEXIBLE FIRESTOP SEALANT OR HILTI FS-ONE MAX OR FS-ONE INTUMESCENT FIRESTOP SEALANT.
5. MINIMUM 5/8" DEPTH HILTI CP 606 FLEXIBLE FIRESTOP SEALANT OR HILTI FS-ONE MAX OR FS-ONE INTUMESCENT FIRESTOP SEALANT.
6. MINIMUM 1/2" BEAD HILTI CP 606 FLEXIBLE FIRESTOP SEALANT OR HILTI FS-ONE MAX OR FS-ONE INTUMESCENT FIRESTOP SEALANT.

**NOTES :** 1. MAXIMUM DIAMETER OF OPENING = 3-1/2".  
 2. ANNULAR SPACE = MINIMUM 0", MAXIMUM 1-1/4".  
 3. CHASE WALL [NOT SHOWN, OPTIONAL] - THE THROUGH PENETRANT MAY BE ROUTED THROUGH A 1-HR. FIRE-RATED GYPSUM CHASE WALL ASSEMBLY.



HILTI, Inc.  
Tulsa, Oklahoma USA (800) 879-8000

Sheet	1 of 1
Scale	3/16" = 1"
Date	Jan. 24, 2015

Drawing No.  
**FC  
1147b**