

UL SYSTEM NO. F-C-2230

PLASTIC PIPE THROUGH WOOD FLOOR/CEILING ASSEMBLY

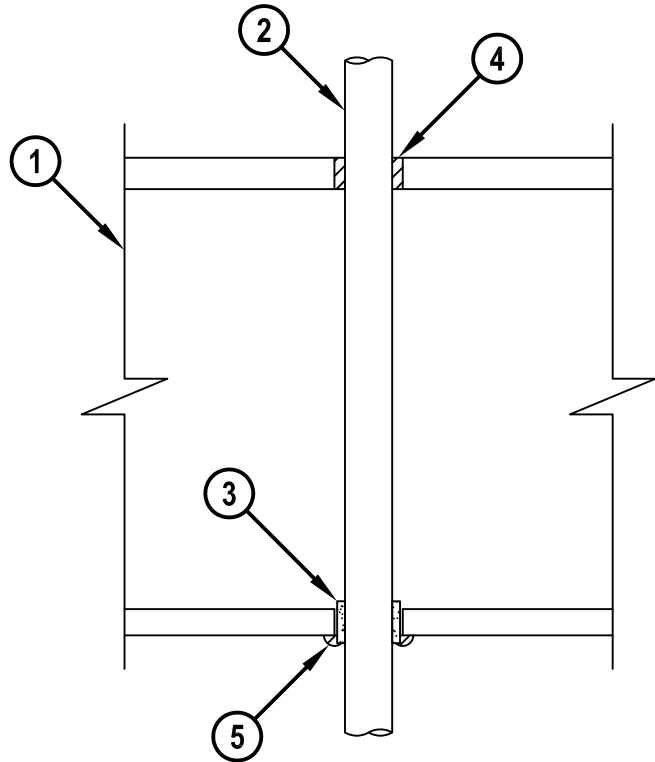
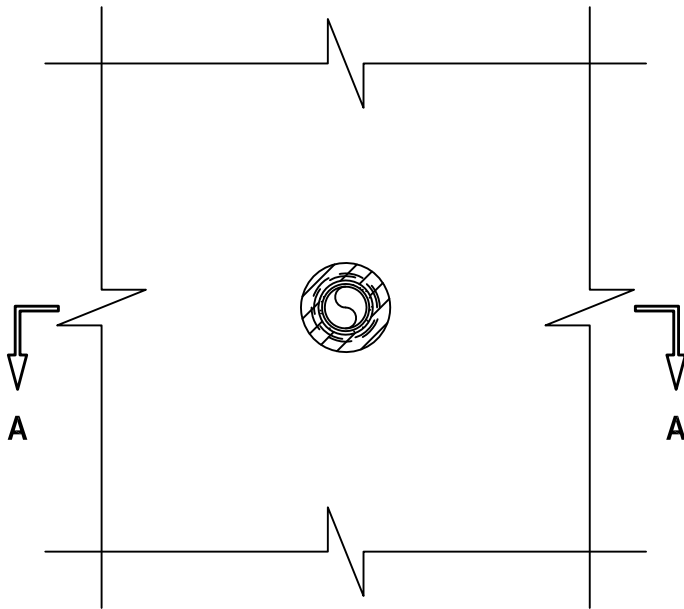
F-RATING = 1-HR.

T-RATING = 1/4-HR.

FC2230c.010715

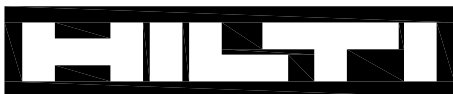
BOTTOM VIEW

SECTION A-A



1. WOOD FLOOR/CEILING ASSEMBLY (UL CLASSIFIED L500 SERIES) (1-HR. FIRE-RATING).
2. MAXIMUM 1" NOMINAL DIAMETER CROSS LINKED POLYETHYLENE (PEX) SDR 9 TUBING (CLOSED OR VENTED PIPING SYSTEM).
3. HILTI CP 648E WRAP STRIP (NOMINAL 3/16" THICK x 1" WIDE) CONTINUOUSLY WRAPPED AROUND THE OUTER CIRCUMFERENCE OF THE TUBE, CENTERED WITHIN GYPSUM CEILING, COVERING ONE TIME, WITH ENDS HELD IN PLACE WITH TAPE.
4. MINIMUM 3/4" DEPTH HILTI FS-ONE MAX OR FS-ONE INTUMESCENT FIRESTOP SEALANT.
5. MINIMUM 1/4" BEAD HILTI FS-ONE MAX OR FS-ONE INTUMESCENT FIRESTOP SEALANT AT WRAP STRIP/GYPSUM INTERFACE.

NOTES : 1. MAXIMUM DIAMETER OF OPENING = 1-5/8".
2. ANNULAR SPACE = NOMINAL 1/4".



Hilti Firestop Systems

HILTI, Inc.
Tulsa, Oklahoma USA (800) 879-8000

Sheet 1 of 1

Scale 7/32" = 1"

Date Jan. 07, 2015

Drawing No.

**FC
2230c**

Saving Lives through Innovation and Education