

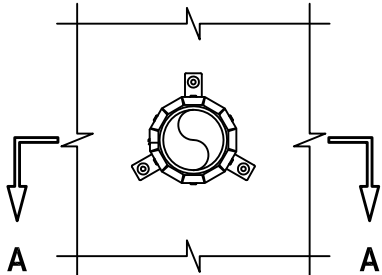
UL SYSTEM NO. F-C-2382

PLASTIC PIPE THROUGH WOOD FLOOR/CEILING ASSEMBLY

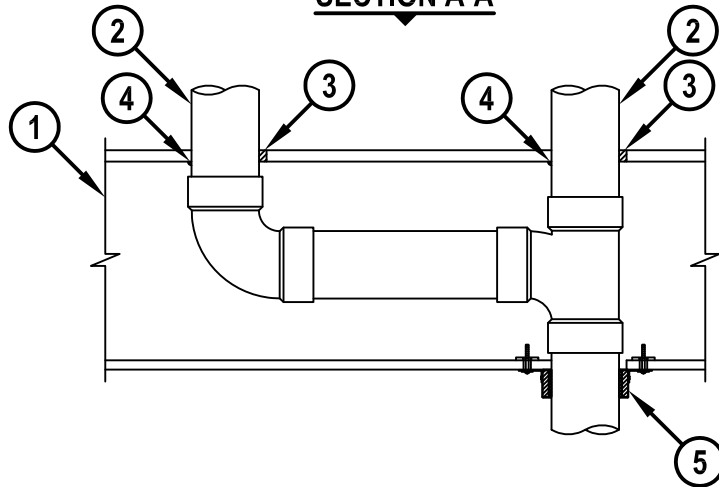
F-RATING = 1-HR.

T-RATING = 1-HR.

BOTTOM VIEW

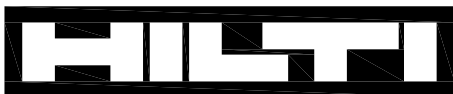


SECTION A-A



1. WOOD FLOOR/CEILING ASSEMBLY (UL CLASSIFIED L500 SERIES) (1-HR. FIRE-RATING).
2. PENETRATING ITEM AND [OPTIONAL] BRANCH PIPING TO BE ONE OF THE FOLLOWING :
 - A. MAXIMUM 4" NOMINAL DIAMETER PVC PLASTIC PIPE (CELLULAR OR SOLID CORE).
 - B. MAXIMUM 4" NOMINAL DIAMETER ABS PLASTIC PIPE (CELLULAR OR SOLID CORE).
3. MINIMUM 3/4" DEPTH HILTI FS-ONE MAX OR FS-ONE INTUMESCENT FIRESTOP SEALANT.
4. MINIMUM 1/4" BEAD HILTI FS-ONE MAX OR FS-ONE INTUMESCENT FIRESTOP SEALANT APPLIED ON UNDERSIDE OF PLYWOOD FLOORING (SEE NOTE NO. 5 BELOW).
5. HILTI CP 643N FIRESTOP COLLAR SECURED TO GYPSUM CEILING WITH 1/4" DIAMETER x 1-1/2" LONG TOGGLE BOLTS WITH 3/4" DIAMETER STEEL WASHER OR TO THE BOTTOM SURFACE OF LOWER TOP PLATE WITH NO. 12 x 1-1/2" LONG STEEL WOOD SCREWS WITH 3/4" DIAMETER STEEL WASHERS.

- NOTES :**
1. DIAMETER OF OPENING THROUGH SUBFLOOR/SOLE PLATE SHALL BE MINIMUM 1/2" TO MAXIMUM 1" LARGER THAN OUTER DIAMETER OF PIPE.
 2. ANNULAR SPACE THROUGH SUBFLOOR = MINIMUM 0", MAXIMUM 1/2".
 3. DIAMETER OF OPENING THROUGH GYPSUM CEILING/TOP PLATE SHALL BE MINIMUM 0" TO MAXIMUM 1/2" LARGER THAN OUTER DIAMETER OF PIPE.
 4. PIPE MAY BE INSTALLED WITH CONTINUOUS POINT OF CONTACT THROUGH GYPSUM CEILING/TOP PLATE AND SUBFLOOR.
 5. AS AN OPTION, AT NON-CONTINUOUS POINT OF CONTACT LOCATIONS, THE BEAD OF SEALANT CAN BE APPLIED AT TOP OF FLOOR AT PIPE/FLOOR AND PIPE/PLATE INTERFACE.
 6. DIAMETER OF OPENING THROUGH SUBFLOOR FOR BRANCH PIPING SHALL BE MINIMUM 0" TO MAXIMUM 1" LARGER THAN OUTER DIAMETER OF PIPE.
 7. CHASE WALL [NOT SHOWN, OPTIONAL] - THE THROUGH PENETRANT MAY BE ROUTED THROUGH A 1-HR. FIRE-RATED GYPSUM CHASE WALL.
 8. BRANCH PIPING MAY TERMINATE IN A MAXIMUM 4" DIAMETER TOILET FLANGE THAT CORRESPONDS TO THE TYPE OF BRANCH PIPING.
 9. CLOSED OR VENTED PIPING SYSTEM (PVC, ABS = SCHEDULE 40).



Hilti Firestop Systems

HILTI, Inc.
Tulsa, Oklahoma USA (800) 879-8000

Sheet	1 of 1
Scale	5/64" = 1"
Date	Jan. 07, 2015

Drawing No.

**FC
2382b**

Saving Lives through Innovation and Education

FC2382b.010718