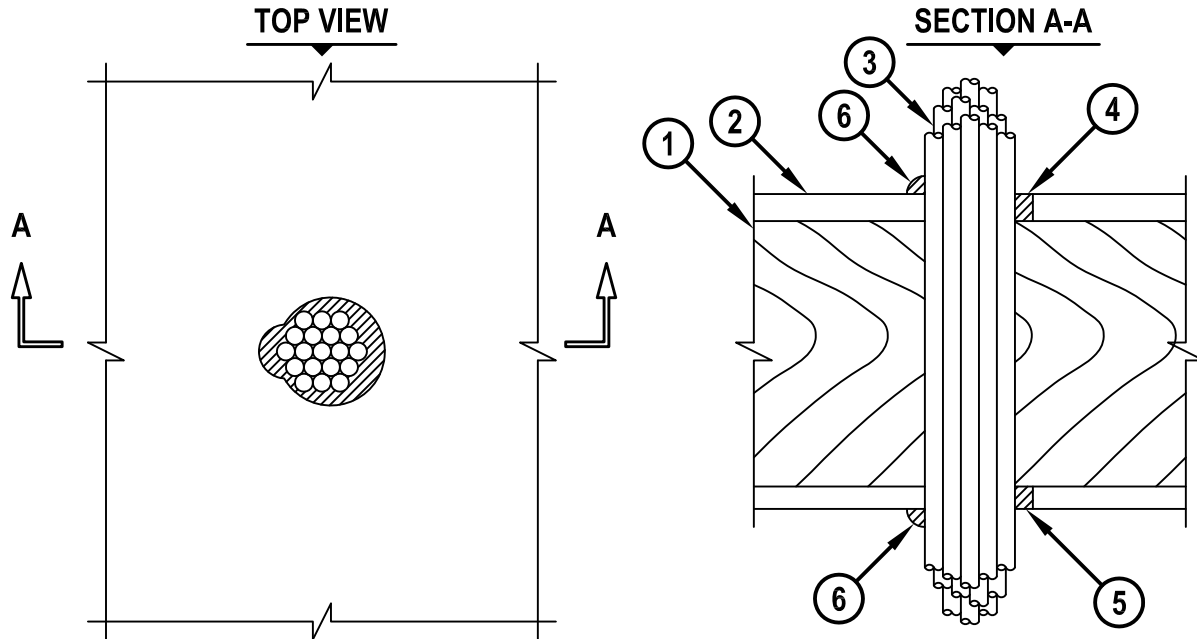


**CABLE BUNDLE THROUGH WOOD FLOOR ASSEMBLY**

F-RATING = 1-HR.

T-RATING = 0-HR. OR 1-HR.

FC3074e.021109



1. WOOD FLOOR ASSEMBLY (UL/cUL CLASSIFIED L500 SERIES) (1-HR. FIRE-RATING).
2. LUMBER OR PLYWOOD SUBFLOOR WITH FINISH FLOOR OF LUMBER, PLYWOOD, OR FLOOR TOPPING MIXTURE.
3. CABLE BUNDLE TO CONSIST OF ANY OF THE FOLLOWING :
  - A. MAXIMUM 150 PAIR NO. 24 AWG TELEPHONE CABLE WITH PVC JACKET.
  - B. MAXIMUM 2/C NO. 10 AWG (+GROUND) WITH PVC JACKET (ROMEX).
  - C. MAXIMUM 3/C (+GROUND) 2/0 AWG ALUMINUM SER CABLE WITH PVC JACKET.
  - D. MAXIMUM 3/C NO. 10 AWG STEEL-CLAD CABLE WITH PVC JACKET.
  - E. FIBER OPTIC CABLE (MAXIMUM 24 FIBER) WITH PVC JACKET.
  - F. RG 59U COAXIAL CABLE WITH PVC JACKET.
  - G. CATEGORY 5 DATA CABLE WITH PVC JACKET.
  - H. ANY CABLES, METAL-CLAD CABLES, OR ARMORED CABLES CURRENTLY LISTED UNDER THE THROUGH PENETRATING PRODUCTS CATEGORY.
  - I. MAXIMUM 4/C (+GRND) NO. 300 KCMIL ALUMINUM SER CABLE.
4. MINIMUM 3/4" DEPTH HILTI CP 606 FLEXIBLE FIRESTOP SEALANT.
5. MINIMUM 5/8" DEPTH HILTI CP 606 FLEXIBLE FIRESTOP SEALANT.
6. MINIMUM 1/2" BEAD HILTI CP 606 FLEXIBLE FIRESTOP SEALANT AT POINT OF CONTACT.

**NOTES :** 1. MAXIMUM DIAMETER OF OPENING = 3".  
 2. ANNULAR SPACE = MINIMUM 0", MAXIMUM 1".  
 3. CABLES TO FILL MAXIMUM 50% OF CROSS-SECTIONAL AREA OF OPENING.  
 4. CHASE WALL (NOT SHOWN, OPTIONAL) - THE THROUGH PENETRANT MAY BE ROUTED THROUGH A 1-HR. GYPSUM CHASE WALL ASSEMBLY.



HILTI, Inc.  
 Tulsa, Oklahoma USA (800) 879-8000

Sheet	1 of 1
Scale	3/16" = 1"
Date	Feb. 11, 2009

Drawing No.

**FC  
3074e**