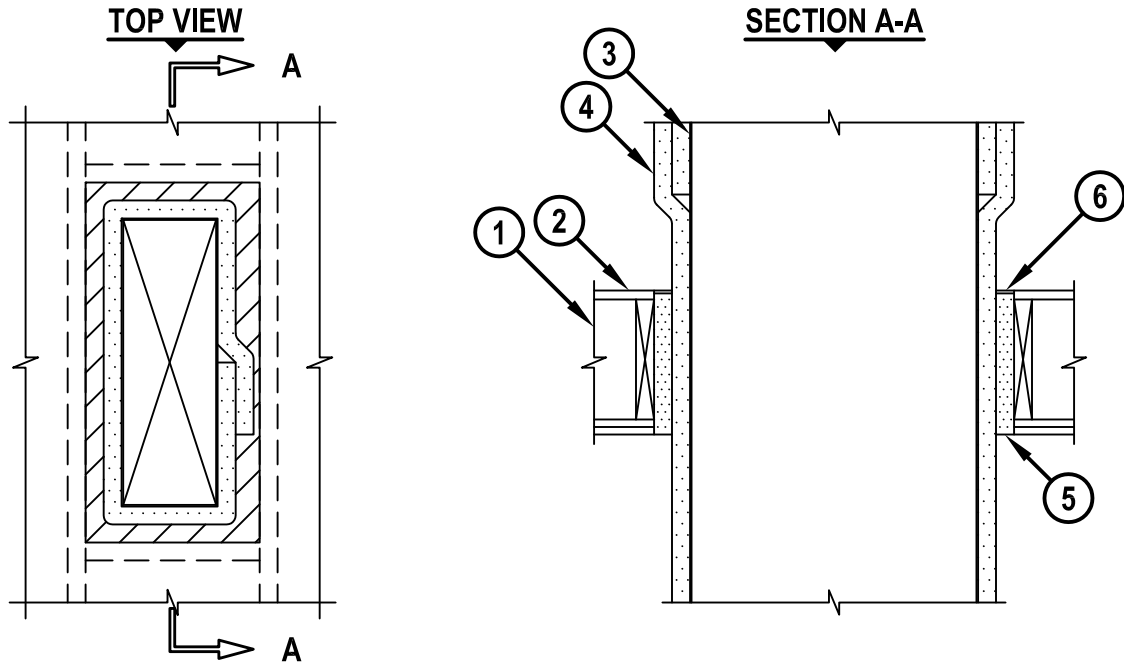


INSULATED DUCT (THERMAL CERAMICS) THROUGH WOOD FLOOR/CEILING ASSEMBLY

F-RATING = 1-HR. OR 2-HR.
T-RATING = 1-HR. OR 2-HR.

FC7036b.010815



1. WOOD FLOOR/CEILING ASSEMBLY (UL/cUL CLASSIFIED L500 SERIES) (1-HR. OR 2-HR. FIRE-RATING) (2-HR. SHOWN).
2. LUMBER OR PLYWOOD SUBFLOOR WITH FINISH FLOOR OF LUMBER, PLYWOOD, OR FLOOR TOPPING MIXTURE.
3. PENETRATING ITEM TO BE ONE OF THE FOLLOWING :
 - A. MINIMUM 26 GAUGE GALVANIZED STEEL AIR DUCT HAVING A MAXIMUM PERIMETER OF 63" AND A MAXIMUM INDIVIDUAL DIMENSION OF 24".
 - B. MINIMUM 16 GAUGE CARBON STEEL GREASE DUCT HAVING A MAXIMUM PERIMETER OF 63" AND A MAXIMUM INDIVIDUAL DIMENSION OF 24".
4. NOMINAL 1-1/2" THICK FIREMASTER® FAST WRAP MANUFACTURED BY THERMAL CERAMICS (SEE NOTES NO. 3 AND 4 BELOW).
5. MINIMUM 10-3/8" AND 11-5/8" THICK UNFACED SCRAP DUCT WRAP MATERIAL COMPRESSED 50% INTO OPENING FOR 1-HR. AND 2-HR. FIRE-RATED ASSEMBLIES, RESPECTIVELY. PACKING MATERIAL INSTALLED FLUSH WITH BOTTOM SURFACE OF CEILING.
6. MINIMUM 1/4" DEPTH HILTI FS-ONE MAX OR FS-ONE INTUMESCENT FIRESTOP SEALANT.

NOTES : 1. MAXIMUM AREA OF OPENING = 435 SQ. IN., WITH MAXIMUM DIMENSION OF 30".
 2. ANNULAR SPACE = NOMINAL 1-1/2".
 3. GREASE DUCT SHALL BE WRAPPED IN ACCORDANCE WITH GREASE DUCT ASSEMBLY NO. G-14.
 4. AIR DUCT SHALL BE WRAPPED IN ACCORDANCE WITH VENTILATION DUCT ASSEMBLY NO. V-19.



HILTI, Inc.
Tulsa, Oklahoma USA (800) 879-8000

Sheet	1 of 1
Scale	1/16" = 1"
Date	Jan. 08, 2015

Drawing No.
FC 7036b