

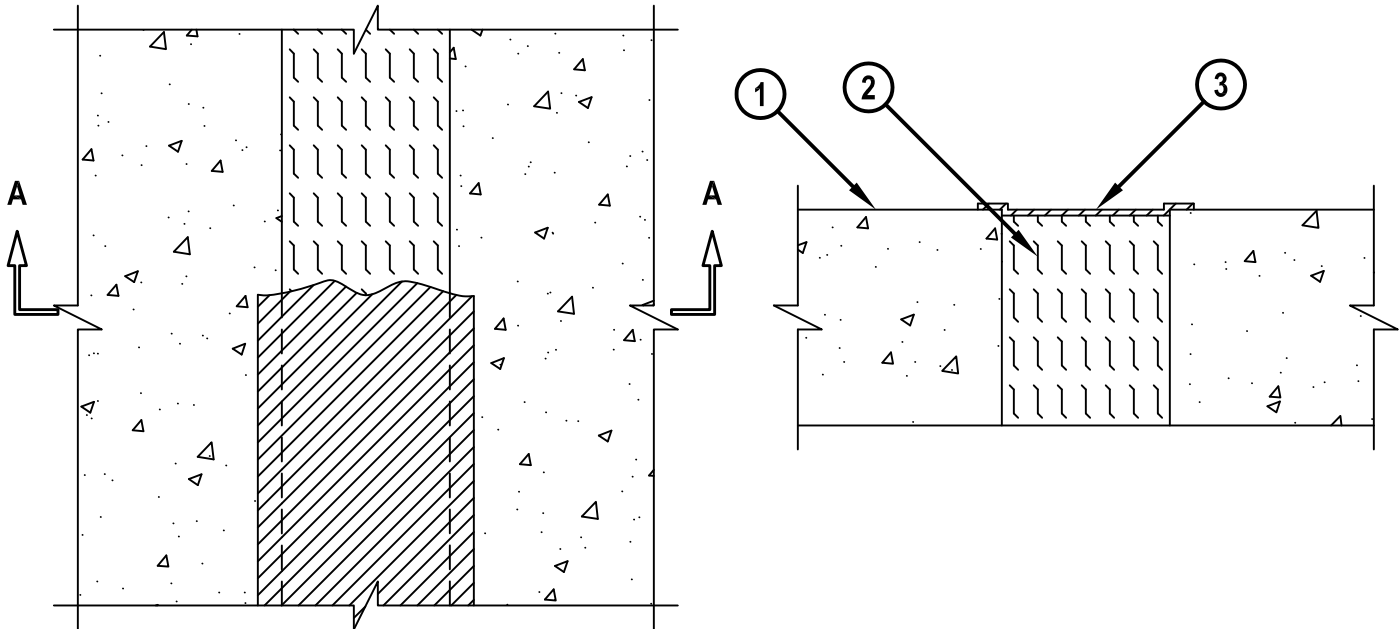
FIRE-RATED JOINT THROUGH CONCRETE FLOOR ASSEMBLY

ASSEMBLY RATING = 2-HR.

CLASS II MOVEMENT CAPABILITIES - 14% COMPRESSION OR EXTENSION

TOP VIEW

SECTION A-A



FFD1013f.052510

1. CONCRETE FLOOR ASSEMBLY (MIN. 4-1/2" THICK) (2-HR. FIRE-RATING).
2. MINIMUM 4-3/8" THICKNESS MINERAL WOOL (MIN. 4 PCF DENSITY) COMPRESSED MINIMUM 42%.
3. MINIMUM 1/8" (WET) THICKNESS HILTI CFS-SP WB FIRESTOP JOINT SPRAY OR HILTI CP 672 SPEED SPRAY APPLIED WITHIN THE JOINT, FLUSH WITH TOP SURFACE OF FLOOR AND LAPPING MINIMUM 1/2" ONTO THE TOP SURFACE OF THE FLOOR ON BOTH SIDES OF JOINT.

NOTE : MAXIMUM WIDTH OF JOINT = 3-1/2".



Hilti Firestop Systems

HILTI, Inc.
Tulsa, Oklahoma USA (800) 879-8000

Sheet	1 of 1
Scale	1/4" = 1"
Date	May 25, 2010

Drawing No.

**FFD
1013f**

Saving Lives through Innovation and Education