

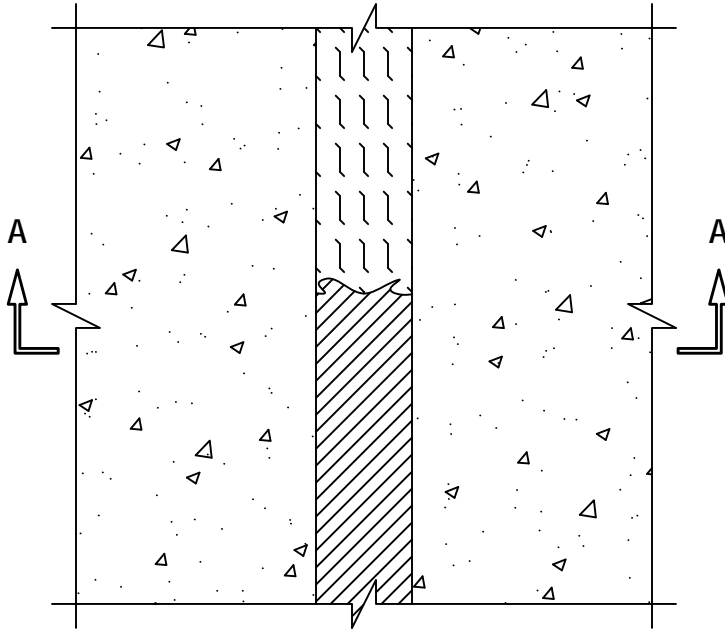
UL/cUL SYSTEM NO. FF-D-1047

**FIRE-RATED JOINT THROUGH CONCRETE FLOOR ASSEMBLY**

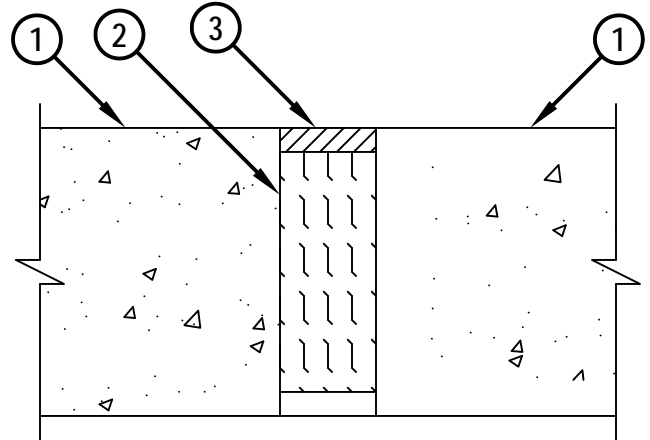
ASSEMBLY RATING = 4-HR.

CLASS II MOVEMENT CAPABILITIES - 12.5% COMPRESSION OR EXTENSION

**TOP VIEW**



**SECTION A-A**



FFD1047b.111313

1. CONCRETE FLOOR ASSEMBLY (MINIMUM 6" THICK) (4-HR. FIRE-RATING).
2. MINIMUM 5" THICKNESS MINERAL WOOL SAFING (MIN. 4 PCF DENSITY) COMPRESSED MINIMUM 50%.
3. MINIMUM 1/2" DEPTH HILTI CP 601S ELASTOMERIC FIRESTOP SEALANT, HILTI CFS-S SIL GG FIRESTOP SILICONE SEALANT, OR HILTI CFS-S SIL SL FIRESTOP SILICONE SEALANT.

**NOTE : MAXIMUM WIDTH OF JOINT = 2".**



HILTI, Inc.  
Tulsa, Oklahoma USA (800) 879-8000

Sheet	1 of 1
Scale	1/4" = 1"
Date	Nov. 13, 2013

Drawing No.  
**FFD  
1047b**

**Saving Lives through Innovation and Education**