

FIRE-RATED JOINT THROUGH CONCRETE FLOOR ASSEMBLY

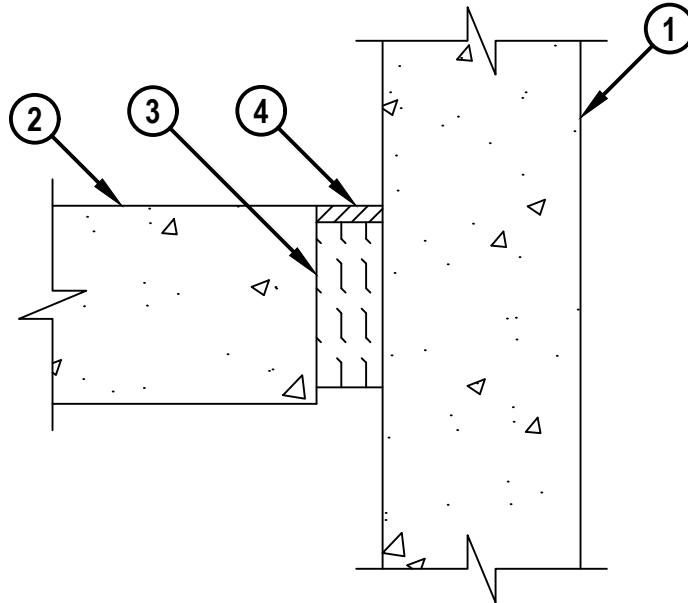
F-RATING = 2-HR. OR 3-HR.

CLASS II MOVEMENT CAPABILITIES - 6% OR 12.5% COMPRESSION OR EXTENSION

L-RATING AT AMBIENT = LESS THAN 1 CFM / LIN FT

L-RATING AT 400°F = LESS THAN 1 CFM / LIN FT

CROSS-SECTIONAL VIEW



FWD0042b.060121

1. CONCRETE WALL ASSEMBLY (2-HR. OR 3-HR. FIRE-RATING) :
 - A. LIGHTWEIGHT OR NORMAL WEIGHT CONCRETE WALL (MINIMUM 4-1/2" THICK FOR 2-HR FIRE-RATING, MINIMUM 6" THICK FOR 3-HR FIRE-RATING).
 - B. ANY UL/cUL CLASSIFIED CONCRETE BLOCK WALL.
2. LIGHTWEIGHT OR NORMAL WEIGHT CONCRETE FLOOR ASSEMBLY :
 - A. MINIMUM 4-1/2" THICK (2-HR FIRE-RATING).
 - B. MINIMUM 6" THICK (3-HR FIRE-RATING).
3. MINERAL WOOL SAFING (MIN. 4 PCF DENSITY) COMPRESSED 50% (SEE TABLE BELOW).
4. HILTI CP 606 FLEXIBLE FIRESTOP SEALANT (SEE TABLE BELOW).

| ASSEMBLY RATING | MAX JOINT WIDTH | MIN THICKNESS OF MINERAL WOOL | MIN DEPTH HILTI CP 606 |
|-----------------|-----------------|-------------------------------|------------------------|
| 3-HR. | 2" | 5" | 1/2" |
| 2-HR. | 2" | 2" | 1/2" |
| 2-HR. | 1" | 2-1/2" | 1/4" |

NOTE : JOINT SYSTEM IS DESIGNED TO ACCOMMODATE A MAX 6% COMPRESSION OR EXTENSION FOR 3-HR. RATING AND MAX 12.5% COMPRESSION OR EXTENSION FOR 2-HR. RATING.



HILTI, Inc.
Plano, Texas USA (800) 879-8000

| | |
|-------|---------------|
| Sheet | 1 of 1 |
| Scale | 11/64" = 1" |
| Date | June 01, 2021 |

Drawing No.
**FWD
0042b**