

UL/cUL SYSTEM NO. FW-D-1013

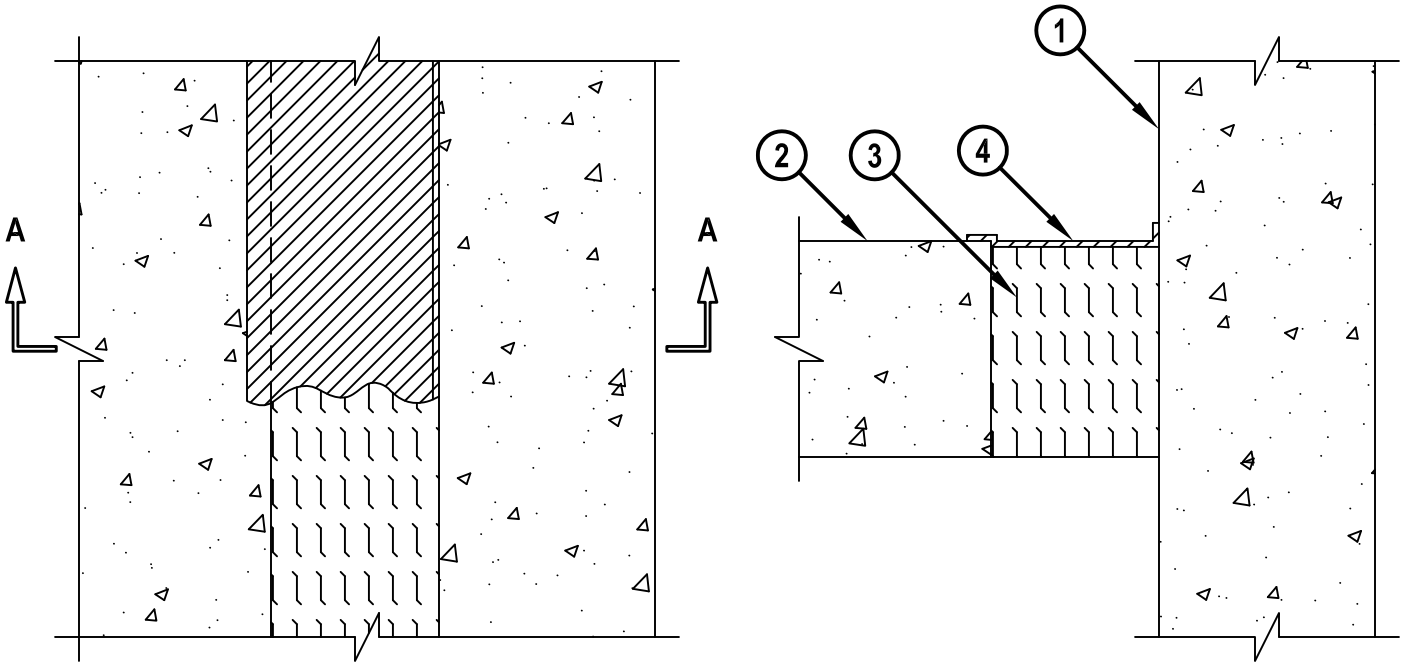
**FIRE-RATED JOINT THROUGH CONCRETE FLOOR ASSEMBLY**

ASSEMBLY RATING = 2-HR.

CLASS II MOVEMENT CAPABILITIES - 14% COMPRESSION OR EXTENSION

**TOP VIEW**

**SECTION A-A**



FWD1013g.052610

**1. CONCRETE WALL ASSEMBLY (2-HR. FIRE-RATING) :**

A. LIGHTWEIGHT OR NORMAL WEIGHT CONCRETE WALL (MIN. 4-1/2" THICK).

B. ANY UL/ULC CLASSIFIED CONCRETE BLOCK WALL.

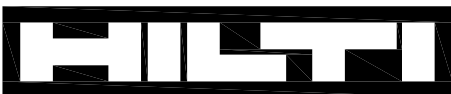
**2. LIGHTWEIGHT OR NORMAL WEIGHT CONCRETE FLOOR (MIN. 4-1/2" THICK) (2-HR. FIRE-RATING).**

**3. MINIMUM 4-3/8" THICKNESS MINERAL WOOL (MIN. 4 PCF DENSITY) COMPRESSED MINIMUM 42%.**

**4. MINIMUM 1/8" (WET) THICKNESS HILTI CFS-SP WB FIRESTOP JOINT SPRAY OR HILTI CP 672**

**SPEED SPRAY APPLIED WITHIN THE JOINT, FLUSH WITH TOP SURFACE OF FLOOR AND OVERLAPPING MINIMUM 1/2" ONTO THE TOP SURFACE OF THE FLOOR AND SIDE OF THE WALL.**

**NOTE : MAXIMUM WIDTH OF JOINT = 3-1/2".**



**Hilti Firestop Systems**

HILTI, Inc.  
Tulsa, Oklahoma USA (800) 879-8000

Sheet	1 of 1
Scale	1/4" = 1"
Date	May 26, 2010

Drawing No.

**FWD  
1013g**

*Saving Lives through Innovation and Education*