

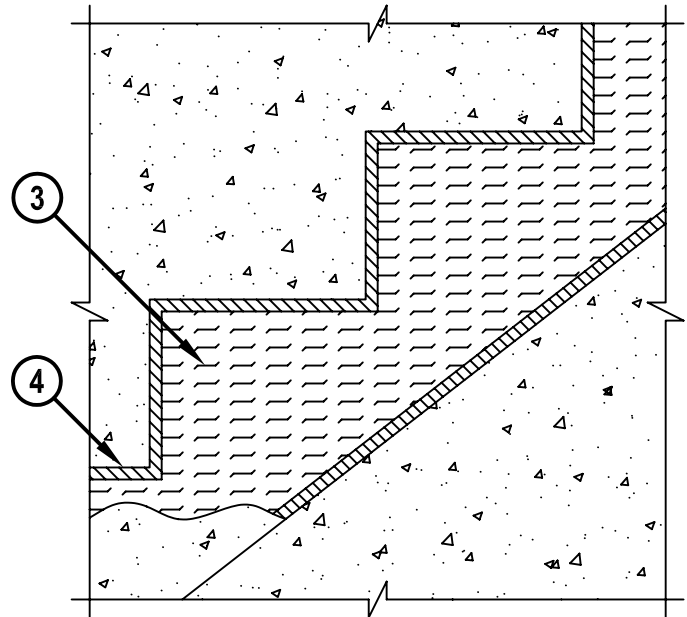
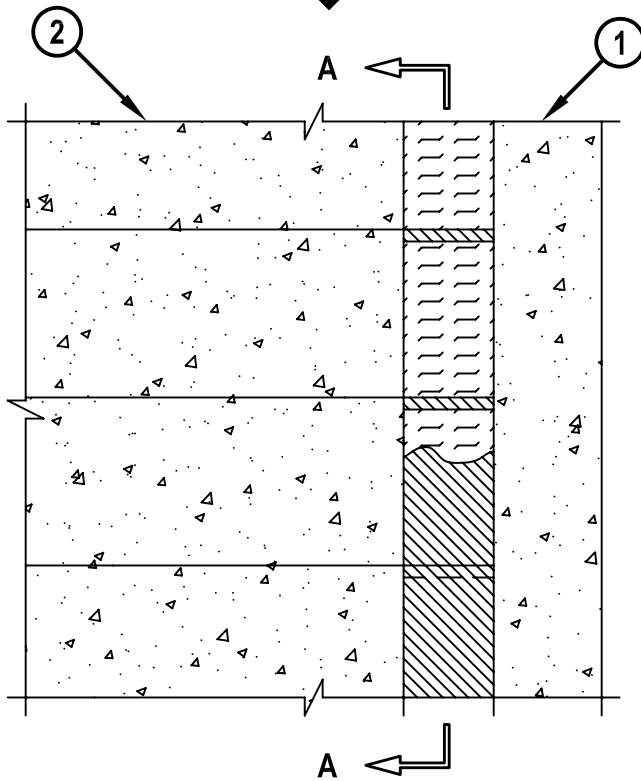
**CONCRETE STAIR ASSEMBLY TO CONCRETE WALL/BLOCK WALL ASSEMBLY**

ASSEMBLY RATING = 2-HR.

CLASS II MOVEMENT CAPABILITIES - 7% COMPRESSION OR EXTENSION

FRONT VIEW

SECTION A-A



FWD1043b.052402

1. CONCRETE WALL ASSEMBLY (2-HR. FIRE-RATING) :
  - A. LIGHTWEIGHT OR NORMAL WEIGHT CONCRETE WALL (MIN. 4-1/2" THICK).
  - B. ANY UL/ULC CLASSIFIED CONCRETE BLOCK WALL.
2. LIGHTWEIGHT OR NORMAL WEIGHT CONCRETE STAIR ASSEMBLY (MIN. 4-1/2" THICK) (2-HR. FIRE-RATING).
3. MINIMUM 3-1/2" THICKNESS MINERAL WOOL (MIN. 4 PCF DENSITY) COMPRESSED MINIMUM 42%.
4. MINIMUM 1/2" DEPTH HILTI CP 606 FLEXIBLE FIRESTOP SEALANT, FLUSH WITH TOP AND BOTTOM SURFACES OF STAIR ASSEMBLY.

**NOTE : WIDTH OF JOINT = MINIMUM 1/4", MAXIMUM 3-3/4".**



HILTI, Inc.  
Tulsa, Oklahoma USA (918) 252-6000

|       |              |
|-------|--------------|
| Sheet | 1 of 1       |
| Scale | 1/8" = 1"    |
| Date  | May 24, 2002 |

Drawing No.  
**FWD  
1043b**