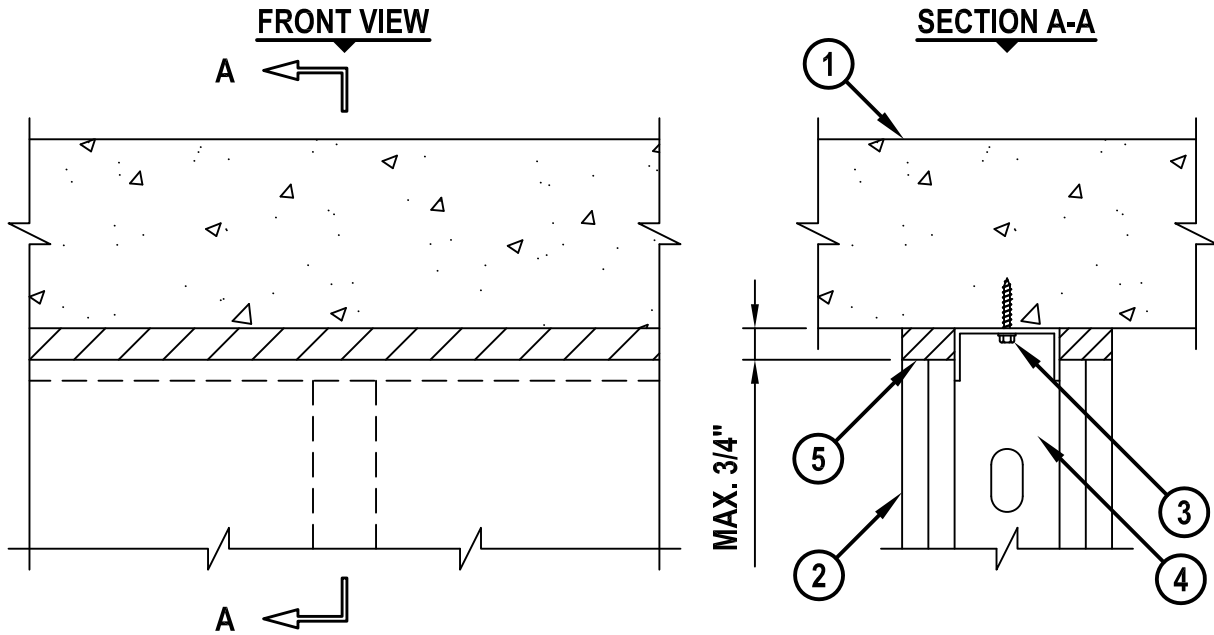


TOP OF WALL JOINT : GYPSUM WALL ASSEMBLY

ASSEMBLY RATING = 1-HR. OR 2-HR. (DEPENDING ON RATING OF WALL AND FLOOR ASSEMBLY)
 CLASS II MOVEMENT CAPABILITIES - 17% COMPRESSION OR EXTENSION
 L-RATING AT AMBIENT = LESS THAN 1 CFM/LIN FT
 L-RATING AT 400°F = LESS THAN 1 CFM/LIN FT

HWD0083k.022610



1. CONCRETE FLOOR ASSEMBLY (1-HR. OR 2-HR. FIRE-RATING) :
 - A. LIGHTWEIGHT OR NORMAL WEIGHT CONCRETE FLOOR ASSEMBLY (MINIMUM 4-1/2" THICK).
 - B. ANY UL/cUL CLASSIFIED PRE-CAST HOLLOW CORE CONCRETE FLOOR ASSEMBLY (MIN. 6" THICK).
2. GYPSUM WALL ASSEMBLY (UL/cUL CLASSIFIED U400 OR V400 SERIES) (1-HR. OR 2-HR. FIRE-RATING) (2-HR. SHOWN).
3. CEILING RUNNER (MIN. 25 GA., FLANGE HEIGHT OF CEILING RUNNER SHALL BE MINIMUM 1/4" GREATER THAN MAXIMUM EXTENDED JOINT WIDTH) FASTENED TO UNDERSIDE OF CONCRETE FLOOR WITH STEEL MASONRY ANCHORS OR STEEL FASTENERS (SPACED MAX. 24" O.C) (SEE NOTE BELOW).
4. STEEL STUDS (MIN. 2-1/2" WIDE), CUT 1/2" TO 3/4" LESS IN LENGTH THAN ASSEMBLY HEIGHT, NESTING IN CEILING RUNNER WITHOUT ATTACHMENT.
5. HILTI CP 606 FLEXIBLE FIRESTOP SEALANT :
 - A. MINIMUM 5/8" DEPTH ON BOTH SIDES OF WALL, FOR A 1-HR. FIRE-RATING.
 - B. MINIMUM 1-1/4" DEPTH ON BOTH SIDES OF WALL, FOR A 2-HR. FIRE-RATING.

NOTE : AS AN ALTERNATE TO CEILING RUNNER IN ITEM NO. 3, CEILING RUNNERS, MANUFACTURED BY BRADY CONSTRUCTION INNOVATIONS, INC., DBA SLIPTRACK SYSTEMS, METAL-LITE, INC., TOTAL STEEL SOLUTIONS, THE STEEL NETWORK, INC., CEMCO, CLARKWESTERN BUILDING SYSTEM, INC., SCAFCO, OR OLMAR SUPPLY, INC., MAY BE USED. WHEN ALTERNATE CEILING TRACKS ARE USED, CONSULT THE UL FIRE RESISTANCE DIRECTORY FOR INSTALLATION INSTRUCTIONS.



HILTI, Inc.
 Tulsa, Oklahoma USA (800) 879-8000

Sheet	1 of 1
Scale	7/32" = 1"
Date	Feb. 26, 2010

Drawing No.
**HWD
 0083k**