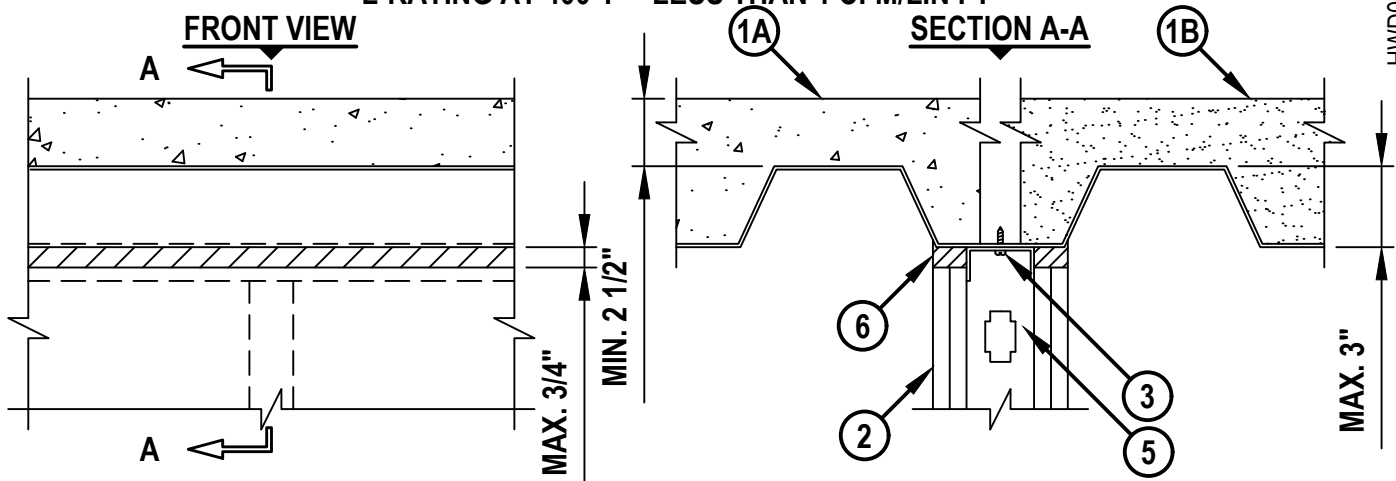


TOP OF WALL JOINT : GYPSUM WALL ASSEMBLY

ASSEMBLY RATING = 1-HR. OR 2-HR. (DEPENDING ON RATING OF WALL AND FLOOR ASSEMBLY)
 CLASS II MOVEMENT CAPABILITIES - 17% COMPRESSION OR EXTENSION
 L-RATING AT AMBIENT = LESS THAN 1 CFM/LIN FT
 L-RATING AT 400°F = LESS THAN 1 CFM/LIN FT

HWD0085q.040219



1. FLOOR OR ROOF ASSEMBLY (1-HR. OR 2-HR. FIRE-RATING) :
 - A. LIGHTWEIGHT OR NORMAL WEIGHT CONCRETE FLOOR (MIN. 2-1/2" THICK) OVER METAL DECKING (UL/cUL CLASSIFIED D700 OR D900 SERIES).
 - A1. REINFORCED CONCRETE (MIN. 2-1/2" THICK) OVER COMPOSITE METAL DECK (MAX. 2-1/2" DEEP FLUTES) (BY EPIC METALS).
 - B. INSULATING CONCRETE (MIN. 2-1/2" THICK) OVER METAL DECKING (UL/cUL CLASSIFIED P900 SERIES).
 - C. [NOT SHOWN] FLUTED STEEL ROOF DECK (UL/cUL CLASSIFIED P700 OR P900 SERIES).
2. GYPSUM WALL ASSEMBLY (UL/cUL CLASSIFIED U400 SERIES) (1-HR. OR 2-HR. FIRE-RATING).
3. CEILING RUNNER (MIN. 25 GA., FLANGE HEIGHT OF CEILING RUNNER SHALL BE MINIMUM 1/4" GREATER THAN MAXIMUM EXTENDED JOINT WIDTH) FASTENED TO UNDERSIDE OF DECK WITH STEEL MASONRY ANCHORS, STEEL FASTENERS, OR WELDS (SPACED MAX. 24" O.C.) (SEE NOTE NO. 3 BELOW).
4. [OPTIONAL - NOT SHOWN] WHEN SPRAY-APPLIED FIREPROOFING IS USED, CEILING RUNNER MAY BE SECURED TO DECK WITH Z-SHAPED CLIPS (MIN. 20 GA.) WITH THE FOLLOWING DIMENSIONS : MINIMUM 1" LONG, BUT NOT EXCEEDING THE WIDTH OF THE WALL, BY 1-1/2" OR 2" LONG UPPER AND LOWER LEGS. SUPPORT CLIPS SPACED MAXIMUM 24" OC.
5. STEEL STUDS (MIN. 2-1/2" WIDE), CUT 1/2" TO 3/4" LESS IN LENGTH THAN ASSEMBLY HEIGHT, NESTING IN CEILING RUNNER WITHOUT ATTACHMENT.
6. HILTI CP 606 FLEXIBLE FIRESTOP SEALANT :
 - A. MINIMUM 5/8" DEPTH ON BOTH SIDES OF WALL, FOR A 1-HR. FIRE-RATING.
 - B. MINIMUM 1-1/4" DEPTH ON BOTH SIDES OF WALL, FOR A 2-HR. FIRE-RATING.

NOTES : 1. MAXIMUM WIDTH OF JOINT = 3/4".
 2. STEEL FLOOR UNITS MAY BE SPRAYED WITH A MINIMUM 5/16" THICKNESS TO MAXIMUM 11/16" THICKNESS OF UL CLASSIFIED MONOKOTE TYPE MK-6/HY FIREPROOFING MANUFACTURED BY W.R. GRACE & CO. PRIOR TO INSTALLATION OF CEILING RUNNERS.
 3. AS AN ALTERNATE TO CEILING RUNNER IN ITEM NO. 3, SLOTTED CEILING RUNNERS MAY BE USED. CONSULT THE UL FIRE RESISTANCE DIRECTORY FOR APPROVED MANUFACTURERS.



HILTI, Inc.
 Plano, Texas USA (800) 879-8000

Sheet	1 of 1
Scale	9/64" = 1"
Date	Apr. 02, 2019

Drawing No.
**HWD
 0085q**