

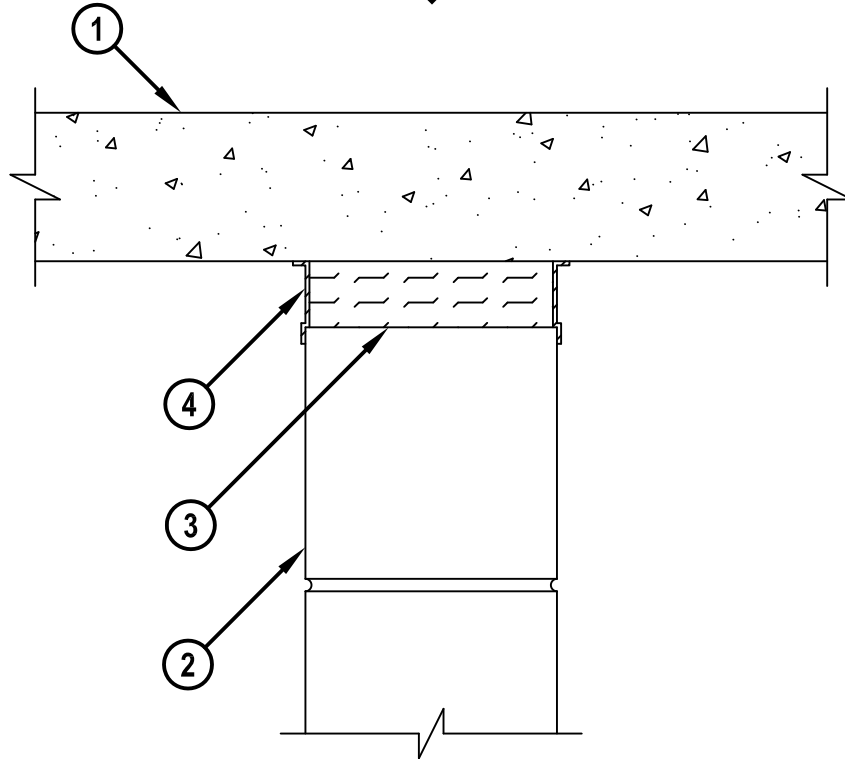
FIRE-RATED JOINT THROUGH CONCRETE WALL OR BLOCK WALL ASSEMBLY

ASSEMBLY RATING = 2-HR.

CLASS II MOVEMENT CAPABILITIES - 14% COMPRESSION OR EXTENSION

HWD0097g.062910

CROSS-SECTIONAL VIEW



1. LIGHTWEIGHT OR NORMAL WEIGHT CONCRETE FLOOR ASSEMBLY (MINIMUM 4-1/2" THICK) (2-HR. FIRE-RATING).
2. CONCRETE WALL ASSEMBLY (2-HR. FIRE-RATING) :
 - A. LIGHTWEIGHT OR NORMAL WEIGHT CONCRETE WALL (MINIMUM 8" THICK).
 - B. ANY UL/cUL CLASSIFIED CONCRETE BLOCK WALL.
3. MINIMUM 8" THICKNESS MINERAL WOOL (MIN. 4 PCF DENSITY) COMPRESSED 50%.
4. MINIMUM 1/8" (WET) THICKNESS HILTI CFS-SP WB FIRESTOP JOINT SPRAY OR HILTI CP 672 SPEED SPRAY APPLIED WITHIN THE JOINT, FLUSH WITH EACH SURFACE OF WALL AND OVERLAPPING MINIMUM 1/2" ONTO FLOOR AND WALL ON BOTH SIDES OF JOINT.

NOTE : MAXIMUM WIDTH OF JOINT = 2".



HILTI, Inc.
Tulsa, Oklahoma USA (800) 879-8000

Sheet	1 of 1
Scale	11/64" = 1"
Date	June 29, 2010

Drawing No.
**HWD
0097g**