

UL/cUL SYSTEM NO. HW-D-0098

TOP OF WALL JOINT : CONCRETE WALL OR BLOCK WALL ASSEMBLY

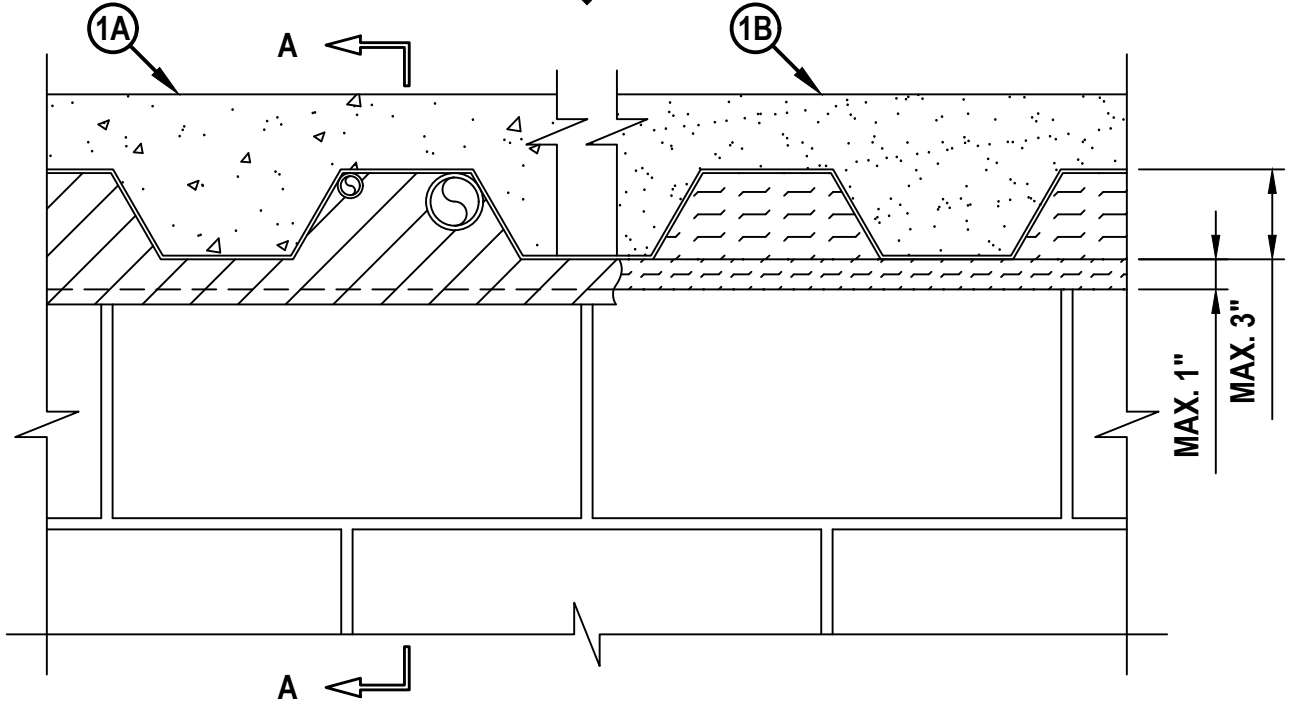
ASSEMBLY RATING = 1-HR. OR 2-HR. (SEE NOTE NO. 4 BELOW)

CLASS II AND III MOVEMENT CAPABILITIES - 12.5% COMPRESSION OR EXTENSION

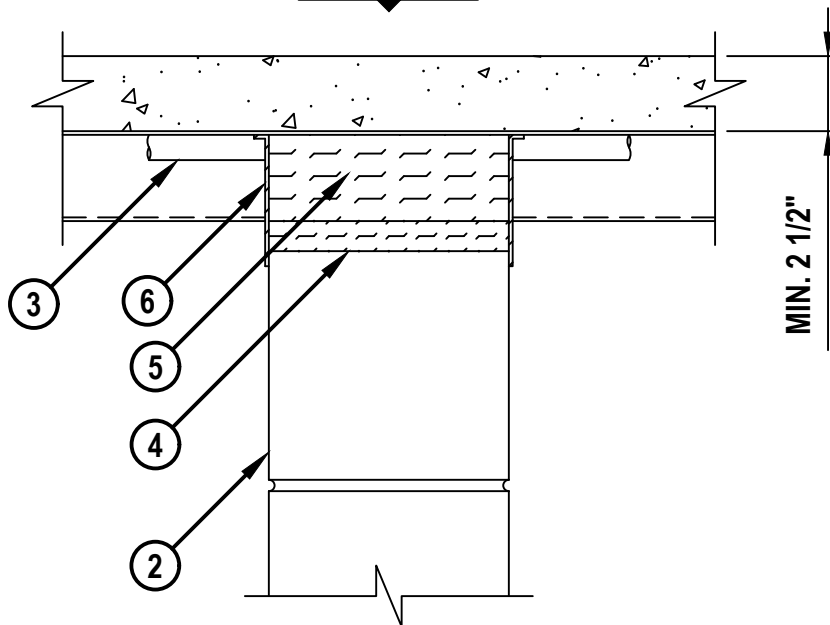
L-RATING AT AMBIENT = LESS THAN 1 CFM / LIN FT

L-RATING AT 400°F = LESS THAN 1 CFM / LIN FT

FRONT VIEW



SECTION A-A



HW-D-0098n.081722



HILTI, Inc.
Plano, Texas USA (800) 879-8000

Sheet	1 of 2
Scale	5/32" = 1"
Date	Aug. 17, 2022

Drawing No.
**HWD
0098n**

Saving Lives through Innovation and Education

TOP OF WALL JOINT : CONCRETE WALL OR BLOCK WALL ASSEMBLY

ASSEMBLY RATING = 1-HR. OR 2-HR. (SEE NOTE NO. 4 BELOW)

CLASS II AND III MOVEMENT CAPABILITIES - 12.5% COMPRESSION OR EXTENSION

L-RATING AT AMBIENT = LESS THAN 1 CFM / LIN FT

L-RATING AT 400°F = LESS THAN 1 CFM / LIN FT

HWD0098n.081722

1. FLOOR OR ROOF ASSEMBLY (1-HR. OR 2-HR. FIRE-RATING) :
 - A. LIGHTWEIGHT OR NORMAL WEIGHT CONCRETE FLOOR (MINIMUM 2-1/2" THICK) OVER METAL DECKING (UL/cUL CLASSIFIED D700 OR D900 SERIES).
 - B. INSULATING CONCRETE (MIN. 2-1/4" THICK) OVER METAL DECKING (UL/cUL CLASSIFIED P900 SERIES).
 - C. [NOT SHOWN] FLUTED STEEL ROOF DECK WITH SPRAY-APPLIED FIREPROOFING (UL/cUL CLASSIFIED P700 SERIES).
2. CONCRETE WALL ASSEMBLY (1-HR. OR 2-HR. FIRE-RATING) :
 - A. LIGHTWEIGHT OR NORMAL WEIGHT CONCRETE WALL (MINIMUM 6" THICK).
 - B. ANY UL/cUL CLASSIFIED CONCRETE BLOCK WALL.
3. ANY COMBINATION OF THE FOLLOWING PENETRATING ITEMS MAY BE INSTALLED PARALLEL WITH AND WITHIN THE FLUTES OF THE STEEL FLOOR OR ROOF DECK (MAX. QTY. = 2) (SEE NOTE NO. 4 BELOW) :
 - A. MAXIMUM 1-1/2" NOMINAL DIAMETER PVC PLASTIC PIPE OR CONDUIT (RNC) (SCH 40) (SOLID CORE) (CLOSED PIPING SYSTEM) (SEE NOTE NO. 7 BELOW).
 - B. MAXIMUM 1/2" NOMINAL DIAMETER STEEL CONDUIT OR EMT.
4. MINERAL WOOL (MIN. 4 PCF DENSITY) COMPRESSED 33% AND INSERTED INTO JOINT, FLUSH WITH BOTH SIDES OF WALL.
5. HILTI CP 777 SPEED PLUGS FRICTION FITTED TO COMPLETELY FILL FLUTE, FLUSH WITH BOTH SIDES OF WALL (SEE NOTE NO. 3 BELOW).
6. MINIMUM 1/8" (WET) THICKNESS HILTI CFS-SP WB FIRESTOP JOINT SPRAY OR HILTI CP 672 SPEED SPRAY TO COMPLETELY COVER MINERAL WOOL AND TO OVERLAP MINIMUM 1/2" ONTO CONCRETE WALL OR CONCRETE BLOCK WALL, PENETRATING ITEMS, AND METAL DECK ON BOTH SIDES OF WALL ASSEMBLY.

- NOTES :**
1. STEEL FLOOR UNITS MAY BE SPRAYED WITH A MINIMUM 5/16" THICKNESS TO MAXIMUM 1-3/4" THICKNESS OF UL CLASSIFIED MONOKOTE TYPE MK-6/HY FIREPROOFING (MANUFACTURED BY W.R. GRACE) OR TYPE 300 FIREPROOFING (MANUFACTURED BY ISOLATEK, INT.).
 2. WHEN THE STEEL DECK IS COATED WITH FIREPROOFING, HILTI FIRESTOP SPRAY SHALL OVERLAP THE WALL MINIMUM 1/2" AND OVERLAP THE FIREPROOFING MINIMUM 2" ON BOTH SIDES OF THE WALL.
 3. AS AN ALTERNATE TO HILTI CP 777 SPEED PLUGS, MINERAL WOOL (MIN. 4 PCF DENSITY) COMPRESSED 33% MAY BE USED.
 4. WHEN THROUGH PENETRANT(S) ARE INSTALLED IN FLUTES OF STEEL DECK, THE HOURLY RATING OF THE JOINT SYSTEM IS 1-HR., AND L-RATINGS DO NOT APPLY.
 5. ANNULAR SPACE BETWEEN PENETRANTS AND STEEL DECK OR SPRAY APPLIED FIRE RESISTIVE MATERIAL SHALL BE MINIMUM 0".
 6. ANNULAR SPACE BETWEEN PENETRANTS WITHIN FLUTE = MINIMUM 2".
 7. USE OF PVC PLASTIC PIPE OR RNC CONDUIT (ITEM 3A) IS NOT APPLICABLE IN CANADA.



HILTI, Inc.
Plano, Texas USA (800) 879-8000

Sheet	2 of 2
Scale	-
Date	Aug. 17, 2022

Drawing No.

**HWD
0098n**