

UL/cUL SYSTEM NO. HW-D-0268

**TOP OF WALL JOINT : CONCRETE WALL OR BLOCK WALL ASSEMBLY**

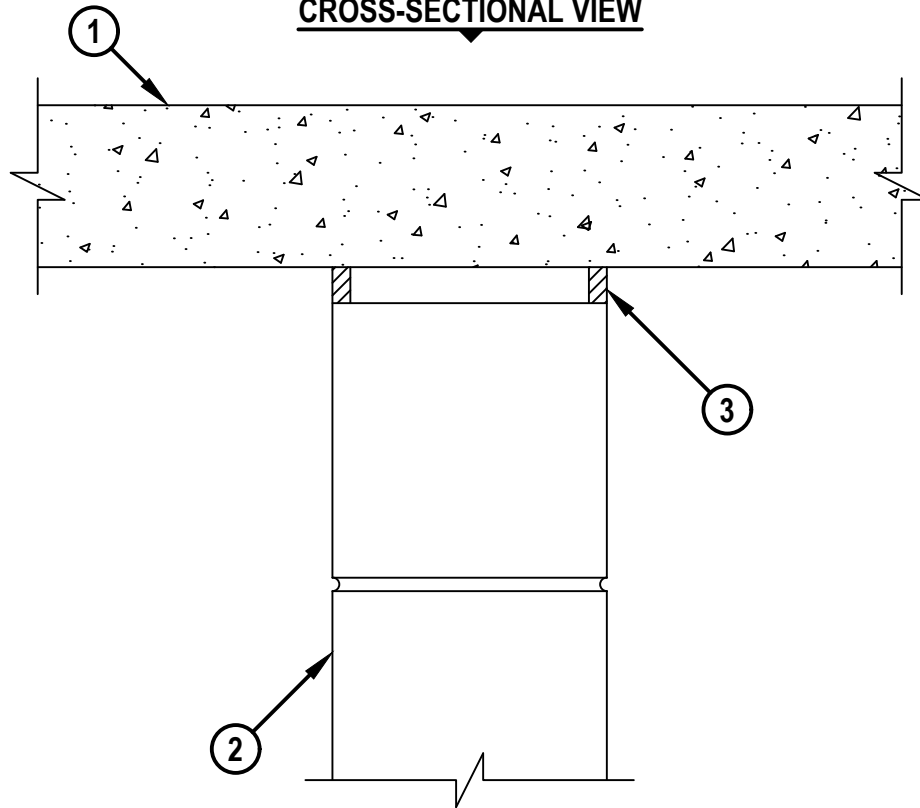
ASSEMBLY RATING = 1-HR., 2-HR., OR 3-HR.

CLASS II MOVEMENT CAPABILITIES - 12.5% COMPRESSION OR EXTENSION

L-RATING AT AMBIENT = LESS THAN 1 CFM / LIN FT

L-RATING AT 400°F = LESS THAN 1 CFM / LIN FT

**CROSS-SECTIONAL VIEW**



HWDD0268h.121120

**1. CONCRETE FLOOR ASSEMBLY :**

- A. LIGHTWEIGHT OR NORMAL WEIGHT CONCRETE FLOOR ASSEMBLY (MINIMUM 2-1/2" THICK).  
WHEN WALL THICKNESS IS 4-1/2", MINIMUM THICKNESS OF FLOOR SHALL BE 4-1/2".
- B. ANY UL/cUL CLASSIFIED PRECAST HOLLOW CORE FLOOR ASSEMBLY (MINIMUM 6" THICK).

**2. CONCRETE WALL ASSEMBLY (1-HR., 2-HR., OR 3-HR. FIRE-RATING) :**

- A. LIGHTWEIGHT OR NORMAL WEIGHT CONCRETE WALL (MIN. 4-1/2" THICK) (1-HR OR 2-HR FIRE-RATING ONLY).
- B. LIGHTWEIGHT OR NORMAL WEIGHT CONCRETE WALL (MIN. 8" THICK) (UP TO 3-HR FIRE-RATING).
- C. ANY UL/cUL CLASSIFIED CONCRETE BLOCK WALL.

**3. HILTI CP 606 FLEXIBLE FIRESTOP SEALANT :**

- A. MINIMUM 1/4" DEPTH OF SEALANT FOR A 1-HR. OR 2-HR. FIRE-RATING.
- B. MINIMUM 1/2" DEPTH OF SEALANT FOR A 3-HR. FIRE-RATING.

NOTES : 1. MAXIMUM WIDTH OF JOINT = 1".  
2. [OPTIONAL] [NOT SHOWN] MINERAL WOOL OR POLYURETHANE FOAM BACKER ROD MAY BE USED AS A BACKER FOR FIRESTOP SEALANT.



Hilti Firestop Systems

HILTI, Inc.  
Plano, Texas USA (800) 879-8000

Sheet	1 of 1
Scale	3/16" = 1"
Date	Dec. 11, 2020

Drawing No.

**HWD  
0268h**

*Saving Lives through Innovation and Education*