

TOP OF WALL JOINT : CONCRETE OR BLOCK WALL ASSEMBLY

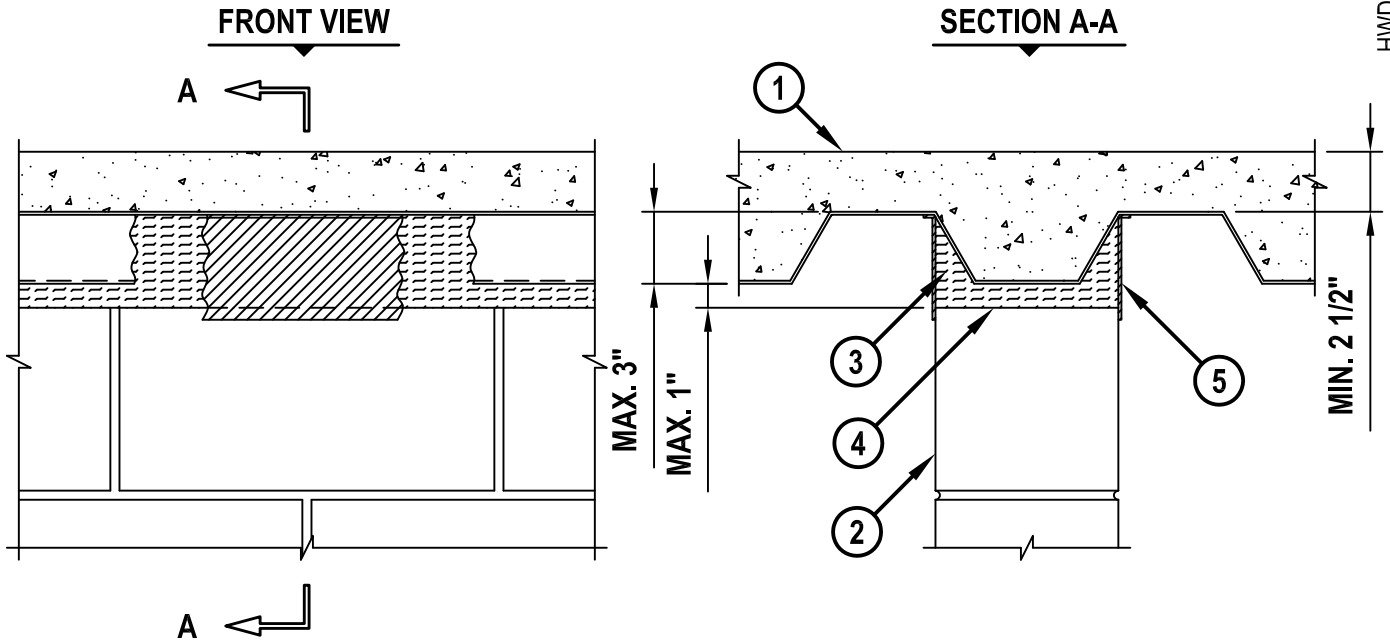
ASSEMBLY RATING = 4-HR.

CLASS II MOVEMENT CAPABILITIES - 12.5% COMPRESSION OR EXTENSION

L-RATING AT AMBIENT = LESS THAN 1 CFM/LIN FT

L-RATING AT 400°F = LESS THAN 1 CFM/LIN FT

HWD0296c.062910



1. LIGHTWEIGHT OR NORMAL WEIGHT CONCRETE FLOOR (MINIMUM 2-1/2" THICK) OVER METAL DECKING (4-HR. FIRE-RATING).
2. CONCRETE WALL ASSEMBLY (4-HR. FIRE-RATING) :
 - A. LIGHTWEIGHT OR NORMAL WEIGHT CONCRETE WALL (MINIMUM 7-1/2" THICK).
 - B. ANY UL/cUL CLASSIFIED CONCRETE BLOCK WALL.
3. MINERAL WOOL (MINIMUM 4 PCF DENSITY) COMPRESSED 50%, TO COMPLETELY FILL FLUTE, FLUSH WITH BOTH SIDES OF THE WALL.
4. MINERAL WOOL (MINIMUM 4 PCF DENSITY) COMPRESSED 50% AND INSERTED INTO JOINT, FLUSH WITH BOTH SIDES OF THE WALL. WIDTH OF MINERAL WOOL TO BE EQUAL TO THE TOTAL THICKNESS OF CONCRETE WALL ASSEMBLY.
5. MINIMUM 1/8" (WET) THICKNESS HILTI CFS-SP WB FIRESTOP JOINT SPRAY OR HILTI CP 672 SPEED SPRAY TO COMPLETELY COVER MINERAL WOOL AND TO OVERLAP MINIMUM 1/2" ONTO METAL DECK AND CONCRETE WALL.

NOTE : MAXIMUM WIDTH OF JOINT = 1".



HILTI, Inc.
Tulsa, Oklahoma USA (800) 879-8000

Sheet	1 of 1
Scale	1/8" = 1"
Date	June 29, 2010

Drawing No.
**HWD
0296c**