

UL/cUL SYSTEM NO. HW-D-0389

TOP OF WALL JOINT : CONCRETE WALL OR BLOCK WALL ASSEMBLY

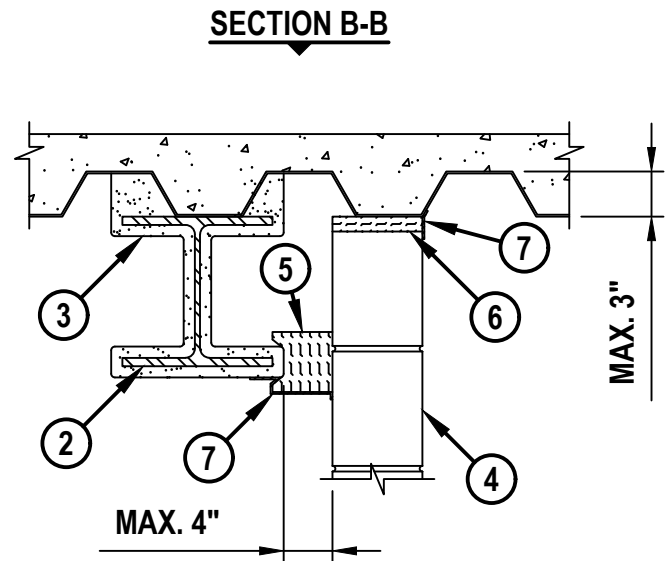
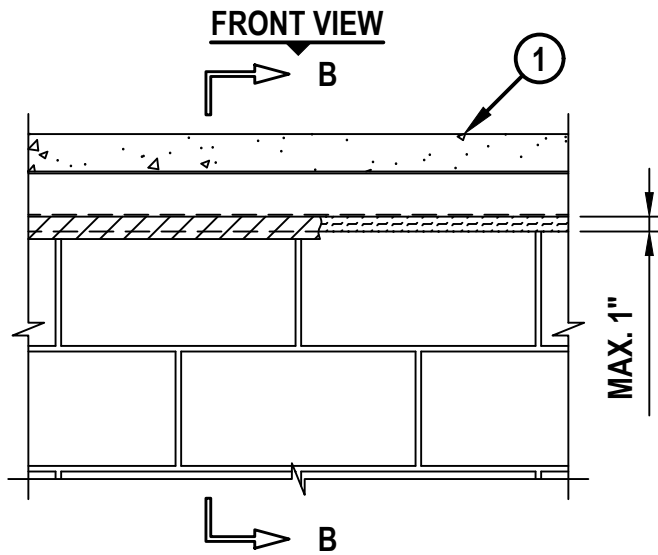
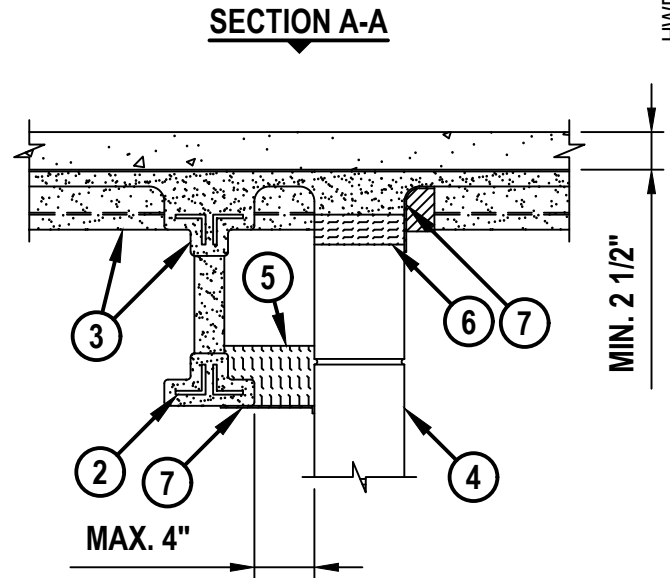
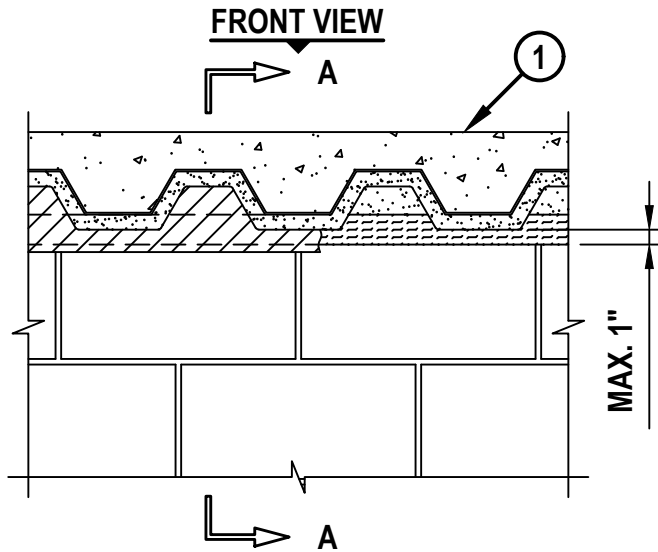
ASSEMBLY RATING = 2-HR.

CLASS II MOVEMENT CAPABILITIES - 12.5% COMPRESSION OR EXTENSION

L-RATING AT AMBIENT = LESS THAN 1 CFM / LIN FT

L-RATING AT 400°F = LESS THAN 1 CFM / LIN FT

HWD0389j.091222



HILTI, Inc.
Plano, Texas USA (800) 879-8000

Sheet	1 of 2
Scale	5/64" = 1"
Date	Sep. 12, 2022

Drawing No.
**HWD
0389j**

Saving Lives through Innovation and Education

TOP OF WALL JOINT : CONCRETE WALL OR BLOCK WALL ASSEMBLY

ASSEMBLY RATING = 2-HR.

CLASS II MOVEMENT CAPABILITIES - 12.5% COMPRESSION OR EXTENSION

L-RATING AT AMBIENT = LESS THAN 1 CFM / LIN FT

L-RATING AT 400°F = LESS THAN 1 CFM / LIN FT

HW/D0389j.091222

1. FLOOR OR ROOF ASSEMBLY (2-HR. FIRE-RATING) :
 - A. LIGHTWEIGHT OR NORMAL WEIGHT CONCRETE FLOOR (MINIMUM 2-1/2" THICK) OVER METAL DECK (UL/cUL CLASSIFIED D700 SERIES).
 - B. [NOT SHOWN] FLUTED STEEL ROOF DECK WITH SPRAY-APPLIED FIREPROOFING (UL/cUL CLASSIFIED P700 SERIES).
2. STRUCTURAL STEEL BEAM OR OPEN-WEB STEEL JOIST AS SPECIFIED IN THE INDIVIDUAL D700 OR P700 SERIES FLOOR-CEILING DESIGN. STEEL SUPPORT ORIENTED PARALLEL AND LOCATED 1" TO 6" FROM WALL.
3. UL/cUL CLASSIFIED MONOKOTE (TYPE MK-6/HY, MK-6/HY ES, MK-6S, RG, MK-10HB) OR (TYPE 300, TYPE 400) FIREPROOFING SPRAYED TO THE THICKNESS SPECIFIED IN THE INDIVIDUAL D700 OR P700 SERIES DESIGN (SEE NOTE BELOW). FIREPROOFING TO COMPLETELY FILL FLUTES ABOVE THE STRUCTURAL STEEL SUPPORT AND FOLLOW THE CONTOUR OF THE STEEL DECK ABOVE THE WALL.
4. CONCRETE WALL ASSEMBLY (2-HR. FIRE-RATING) :
 - A. LIGHTWEIGHT OR NORMAL WEIGHT CONCRETE WALL (MINIMUM 6" THICK).
 - B. ANY UL/cUL CLASSIFIED CONCRETE BLOCK WALL ASSEMBLY.
5. MINIMUM 4" THICKNESS MINERAL WOOL SAFING (MIN. 4 PCF DENSITY) COMPRESSED 33% AND INSTALLED FLUSH WITH OR EXTENDING A MAX. 1-1/2" BELOW BOTTOM SURFACE OF FIREPROOFING ON STRUCTURAL STEEL MEMBER.
6. MINIMUM 6" THICKNESS MINERAL WOOL SAFING (MIN. 4 PCF DENSITY) COMPRESSED 50% AND INSERTED INTO JOINT AND FLUTES FLUSH WITH SURFACE OF WALL.
7. MINIMUM 1/8" (WET) THICKNESS HILTI CFS-SP WB FIRESTOP JOINT SPRAY TO COMPLETELY COVER MINERAL WOOL AND TO OVERLAP A MINIMUM 1/2" ONTO CONCRETE AND MINIMUM 2" ONTO FIREPROOFING.

NOTE : WHEN STRUCTURAL STEEL SUPPORT CONSISTS OF OPEN-WEB STEEL JOISTS, 3/8" DIAMOND MESH EXPANDED STEEL LATH (1.7 TO 3.4 LB./SQ. YD.) SHALL BE INSTALLED TO COMPLETELY COVER ONE SIDE OF EACH JOIST. LATH SHALL BE SECURED WITH STEEL TIE WIRE AND COMPLETELY FILLED WITH FIREPROOFING.



Hilti Firestop Systems

HILTI, Inc.
Plano, Texas USA (800) 879-8000

Sheet 2 of 2

Scale -

Date Sep. 12, 2022

Drawing No.

**HWD
0389j**