

UL/cUL SYSTEM NO. HW-D-0466

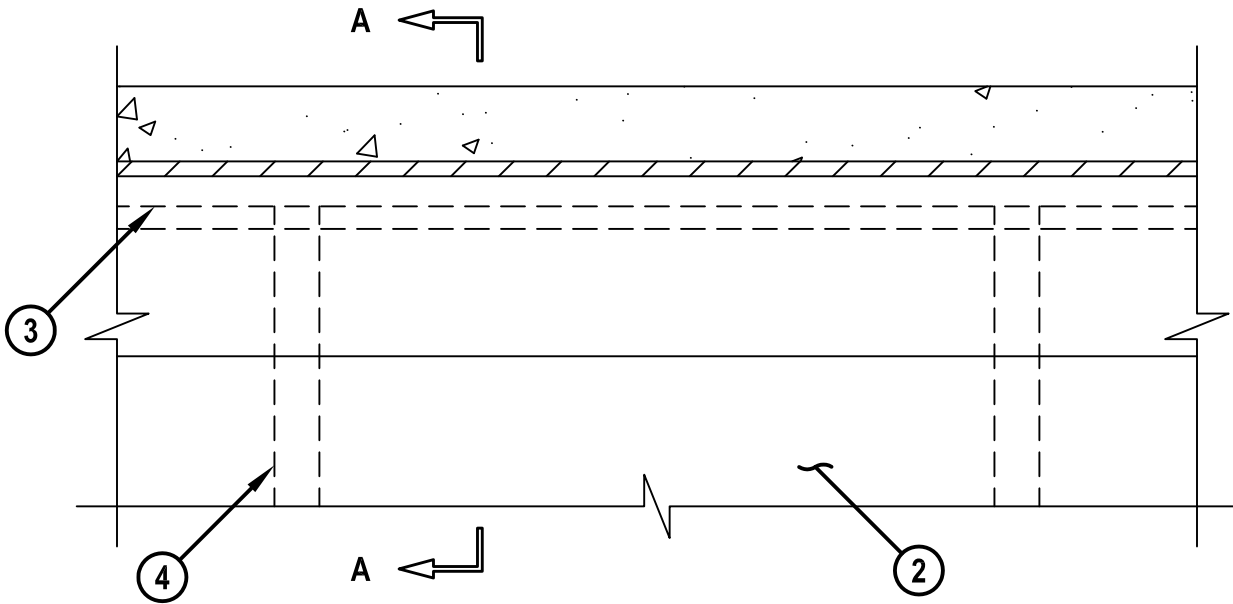
TOP OF WALL JOINT : GYPSUM WALL ASSEMBLY

ASSEMBLY-RATING = 1-HR. OR 2-HR.

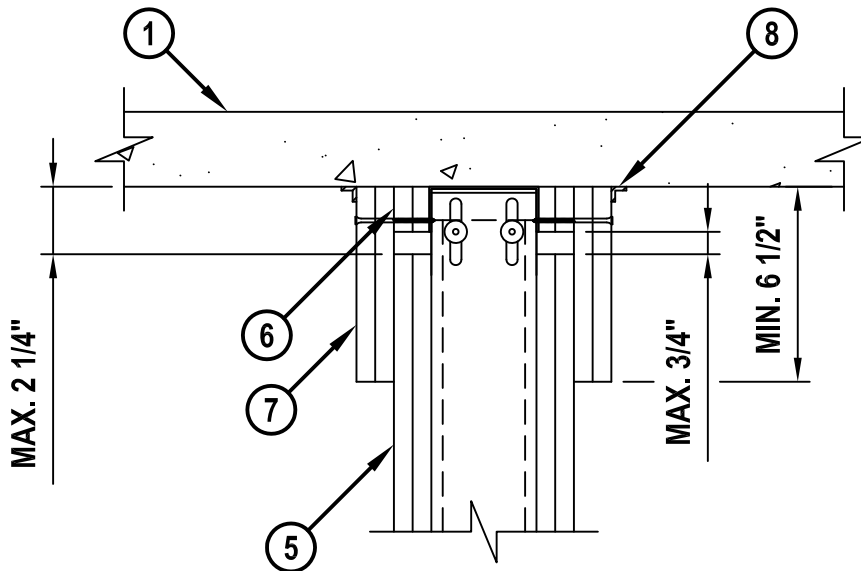
CLASS II MOVEMENT CAPABILITIES - 100% COMPRESSION OR 50% EXTENSION

HWD0466c.062910

FRONT VIEW



SECTION A-A



HILTI, Inc.
Tulsa, Oklahoma USA (800) 879-8000

Sheet	1 of 2
Scale	5/32" = 1"
Date	June 29, 2010

Drawing No.
**HWD
0466c**

Saving Lives through Innovation and Education

UL/cUL SYSTEM NO. HW-D-0466

TOP OF WALL JOINT : GYPSUM WALL ASSEMBLY

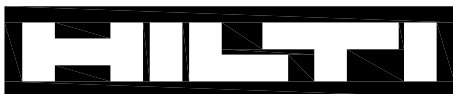
ASSEMBLY-RATING = 1-HR. OR 2-HR.

CLASS II MOVEMENT CAPABILITIES - 100% COMPRESSION OR 50% EXTENSION

HW D0466c.062910

1. CONCRETE FLOOR ASSEMBLY (2-HR. FIRE-RATING) :
 - A. LIGHTWEIGHT OR NORMAL WEIGHT CONCRETE FLOOR (MINIMUM 2-1/2" THICK).
 - B. ANY UL/cUL CLASSIFIED PRECAST (HOLLOW-CORE) CONCRETE FLOOR (MINIMUM 6" THICK).
2. GYPSUM WALL ASSEMBLY (UL/cUL CLASSIFIED U400 OR V400 SERIES) (1-HR. OR 2-HR. FIRE-RATING) (2-HR. SHOWN).
3. CEILING RUNNER (1-1/2" FLANGES) FASTENED TO UNDERSIDE OF CONCRETE FLOOR WITH STEEL MASONRY ANCHORS OR STEEL FASTENERS (SPACED MAX. 24" O.C.).
4. STEEL STUDS (MINIMUM 3-1/2" WIDE) CUT 3/4" TO 1" LESS IN LENGTH THAN ASSEMBLY HEIGHT, NESTING IN CEILING RUNNER WITHOUT ATTACHMENT (SEE NOTE NO. 2 BELOW).
5. 5/8" OR 1-1/4" THICKNESS GYPSUM WALLBOARD AS SPECIFIED IN THE INDIVIDUAL UL DESIGN. TOP ROW OF SCREWS SHALL BE INSTALLED INTO STUDS 3-1/2" TO 4" BELOW THE BOTTOM PLANE OF FLOOR.
6. WALL CLADDING - 5/8" OR 1-1/4" THICK GYPSUM WALLBOARD AS SPECIFIED IN THE INDIVIDUAL UL DESIGN. CLADDING TO BE BUTTED TIGHT TO CONCRETE FLOOR AND EXTENDING DOWN TO BOTTOM OF THE CEILING RUNNER FASTENED TO CEILING RUNNER 24" C/C.
7. WALL CLADDING - 5/8" OR 1-1/4" THICK GYPSUM WALLBOARD AS SPECIFIED IN THE INDIVIDUAL UL DESIGN. CLADDING TO BE BUTTED TIGHT TO CONCRETE FLOOR AND OVERLAPPING WALL MINIMUM 6-1/2" FASTENED TO CEILING RUNNER 6" C/C.
8. MINIMUM 1/8" (WET) THICKNESS HILTI CFS-SP WB FIRESTOP JOINT SPRAY OR HILTI CP 672 SPEED SPRAY APPLIED AT WALL/FLOOR INTERFACE, COMPLETELY COVERING JOINT AND OVERLAPPING MINIMUM 1/2" ONTO WALL CLADDING AND CONCRETE FLOOR (SEE NOTE NO. 3 BELOW).

NOTES : 1. MAXIMUM WIDTH OF JOINT = 3/4".
2. AS AN ALTERNATE TO CEILING RUNNER IN ITEM NO. 3, CEILING RUNNERS, MANUFACTURED BY THE STEEL NETWORK, INC., MAY BE USED. WHEN ALTERNATE CEILING RUNNERS ARE USED, CONSULT THE UL FIRE RESISTANCE DIRECTORY FOR INSTALLATION INSTRUCTIONS.
3. AS AN ALTERNATE TO HILTI FIRESTOP SPRAY, A MINIMUM 1/2" BEAD HILTI CP 606 FLEXIBLE FIRESTOP SEALANT APPLIED ON EACH SIDE OF THE WALL AT THE INTERFACE OF WALL CLADDING AND CONCRETE FLOOR MAY BE USED.



Hilti Firestop Systems

HILTI, Inc.
Tulsa, Oklahoma USA (800) 879-8000

Sheet	2 of 2
Scale	-
Date	June 29, 2010

Drawing No.

**HW D
0466c**

Saving Lives through Innovation and Education