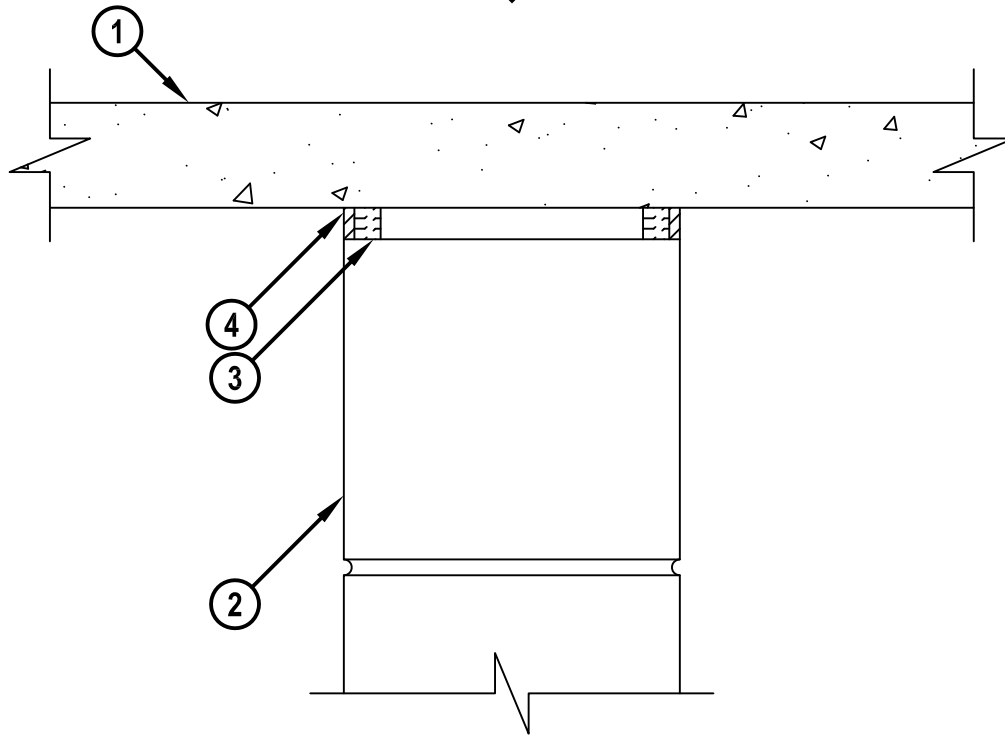


**TOP OF WALL JOINT : CONCRETE WALL OR BLOCK WALL ASSEMBLY**

ASSEMBLY RATING = 2-HR.

CLASS II MOVEMENT CAPABILITIES - 17% COMPRESSION OR EXTENSION

**CROSS-SECTIONAL VIEW**



HWD0516a.081808

1. CONCRETE FLOOR ASSEMBLY (2-HR. FIRE-RATING) :
  - A. LIGHTWEIGHT OR NORMAL WEIGHT CONCRETE FLOOR (MINIMUM 2-1/2" THICK).
  - B. ANY UL/cUL CLASSIFIED PRECAST (HOLLOW-CORE) CONCRETE FLOOR (MINIMUM 6" THICK).
2. CONCRETE WALL ASSEMBLY (2-HR. FIRE-RATING) :
  - A. LIGHTWEIGHT OR NORMAL WEIGHT CONCRETE WALL (MINIMUM 7-7/8" THICK).
  - B. ANY UL/cUL CLASSIFIED CONCRETE BLOCK WALL.
3. HILTI CP 767 SPEED STRIPS (5/8" THICKNESS) COMPRESSED 25% AND INSERTED INTO JOINT, RECESSED TO ACCOMMODATE SEALANT (SEE NOTE NO. 2 BELOW).
4. MINIMUM 1/4" DEPTH HILTI CP 606 FLEXIBLE FIRESTOP SEALANT.

**NOTES :** 1. MAXIMUM WIDTH OF JOINT = 3/4".  
 2. AS AN ALTERNATE TO HILTI CP 767 SPEED STRIPS, MINIMUM 5/8" THICKNESS MINERAL WOOL (MIN. 4 PCF DENSITY) COMPRESSED 25% MAY BE USED.



HILTI, Inc.  
Tulsa, Oklahoma USA (800) 879-8000

Sheet	1 of 1
Scale	7/32" = 1"
Date	Aug. 18, 2008

Drawing No.  
**HWD**  
**0516a**