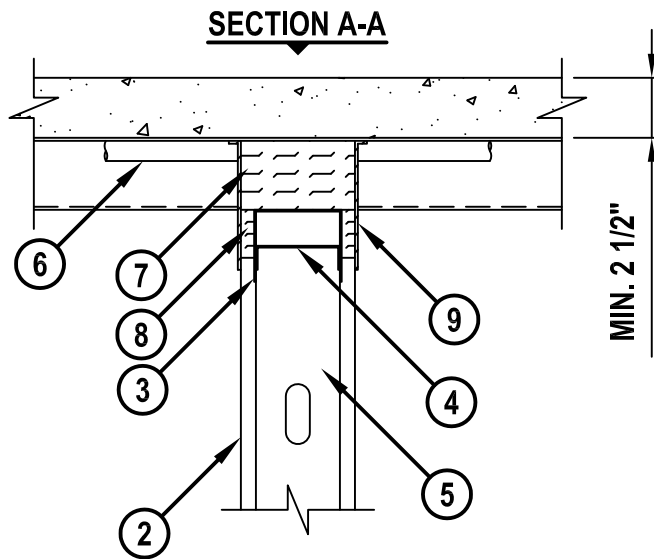
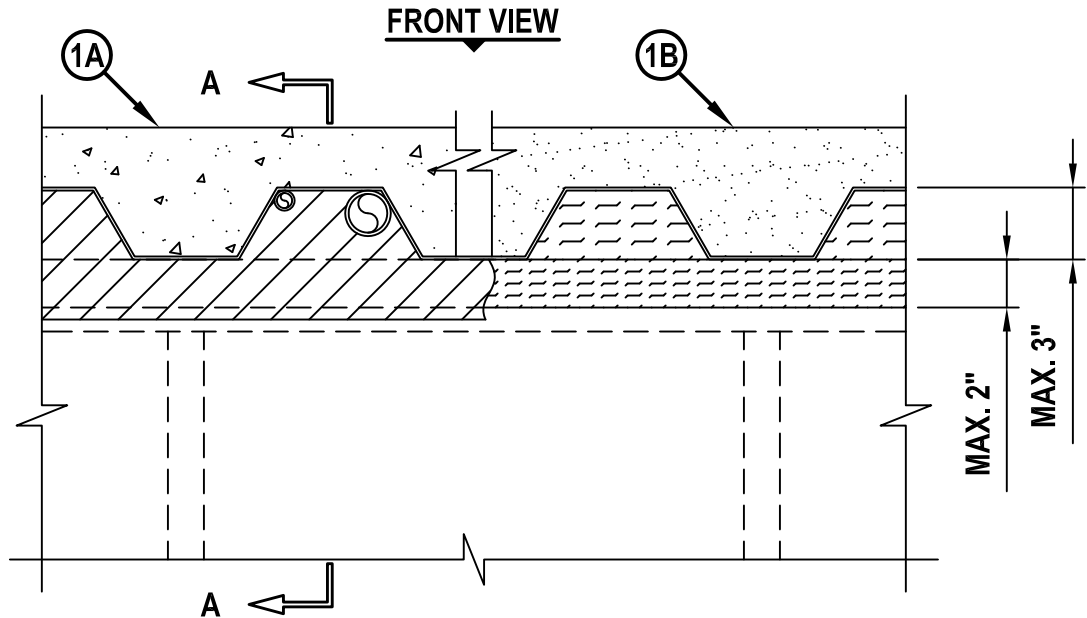


UL/cUL SYSTEM NO. HW-D-0564

## TOP OF WALL JOINT : GYPSUM WALL ASSEMBLY

ASSEMBLY RATING = 1-HR.

CLASS II AND III MOVEMENT CAPABILITIES - 20% COMPRESSION OR EXTENSION, OR  
CLASS II MOVEMENT CAPABILITIES - 20% COMPRESSION OR 12.5% EXTENSION (SEE NOTE NO. 5 BELOW)



1. FLOOR OR ROOF ASSEMBLY (1-HR. FIRE-RATING) :
  - A. LIGHTWEIGHT OR NORMAL WEIGHT CONCRETE FLOOR (MIN. 2-1/2" THICK) OVER METAL DECKING (UL/cUL CLASSIFIED D700 OR D900 SERIES).
  - B. INSULATING CONCRETE (MIN. 2-1/4" THICK) OVER METAL DECKING (UL/cUL CLASSIFIED P900 SERIES).
  - C. [NOT SHOWN] FLUTED STEEL ROOF DECK WITH SPRAY-APPLIED FIREPROOFING (UL/cUL CLASSIFIED P700 SERIES).
2. GYPSUM WALL ASSEMBLY (UL/cUL CLASSIFIED U400 OR V400 SERIES) (1-HR. FIRE-RATING).



HILTI, Inc.  
Tulsa, Oklahoma USA (800) 879-8000

Sheet	1 of 2
Scale	1/8" = 1"
Date	June 30, 2010

Drawing No.  
**HWD  
0564c**

*Saving Lives through Innovation and Education*

HWD0564c.063010

**TOP OF WALL JOINT : GYPSUM WALL ASSEMBLY**

ASSEMBLY RATING = 1-HR.

CLASS II AND III MOVEMENT CAPABILITIES - 20% COMPRESSION OR EXTENSION, OR  
CLASS II MOVEMENT CAPABILITIES - 20% COMPRESSION OR 12.5% EXTENSION (SEE NOTE NO. 5 BELOW)

HWD0564c.063010

3. [OPTIONAL] METAL DEFLECTION TRACK (MIN. 22 GA., 3" FLANGES) FASTENED TO UNDERSIDE OF STEEL DECK WITH STEEL FASTENERS OR WELDS SPACED MAXIMUM 24" O.C.
4. CEILING RUNNER (1" FLANGES) INSTALLED WITHIN THE U-SHAPED DEFLECTION CHANNEL WITH A 1-1/2" GAP MAINTAINED BETWEEN THE TOP OF THE CEILING RUNNER AND TOP OF DEFLECTION PLATE (SEE NOTE NO. 3 BELOW).
5. STEEL STUDS (MINIMUM 3-1/2" WIDE), CUT 1/2" TO 3/4" LESS IN LENGTH THAN ASSEMBLY HEIGHT, NESTING IN CEILING RUNNER WITHOUT ATTACHMENT.
6. ANY COMBINATION OF THE FOLLOWING PENETRATING ITEMS MAY BE INSTALLED PARALLEL WITH AND WITHIN THE FLUTES OF THE STEEL FLOOR OR ROOF DECK (MAX. QTY. = 2) (SEE NOTE NO. 4 BELOW) :
  - A. MAXIMUM 1-1/2" NOMINAL DIAMETER PVC PLASTIC PIPE OR CONDUIT (RNC) (SCH 40) (SOLID CORE) (CLOSED PIPING SYSTEM) (SEE NOTE NO. 6 BELOW).
  - B. MAXIMUM 1/2" NOMINAL DIAMETER STEEL CONDUIT OR EMT.
7. HILTI CP 777 SPEED PLUGS FRICTION FITTED TO COMPLETELY FILL FLUTE, FLUSH WITH BOTH SIDES OF WALL (SEE NOTE NO. 4 BELOW).
8. HILTI CP 767 SPEED STRIPS COMPRESSED 50% AND INSERTED INTO JOINT, FLUSH WITH BOTH SIDES OF GYPSUM WALL (SEE NOTE NO. 4 BELOW).
9. MINIMUM 1/8" (WET) THICKNESS HILTI CFS-SP WB FIRESTOP JOINT SPRAY OR HILTI CP 672 SPEED SPRAY TO COMPLETELY COVER MINERAL WOOL AND TO OVERLAP A MINIMUM 1/2" ONTO GYPSUM WALL, PENETRATING ITEMS, AND METAL DECKING ON BOTH SIDES OF GYPSUM WALL ASSEMBLY.

**NOTES :**

1. STEEL FLOOR UNITS MAY BE SPRAYED WITH A MIN. 5/16" THICKNESS TO MAX. 1-3/4" THICKNESS OF UL CLASSIFIED MONOKOTE TYPE MK-6/HY (MANUFACTURED BY W.R. GRACE) OR TYPE 300 (MANUFACTURED BY ISOLATEK, INT.) FIREPROOFING PRIOR TO INSTALLATION OF CEILING RUNNERS.
2. WHEN THE STEEL DECK IS COATED WITH FIREPROOFING, HILTI FIRESTOP SPRAY SHALL OVERLAP THE WALL A MIN. 1/2" AND OVERLAP THE FIREPROOFING A MIN. 2" ON BOTH SIDES OF GYPSUM WALL ASSEMBLY.
3. AS AN ALTERNATE TO CEILING RUNNER IN ITEM NO. 4, CEILING RUNNERS, MANUFACTURED BY BRADY CONSTRUCTION INNOVATIONS, INC., DBA SLIPTRACK SYSTEMS, INC., CEMCO, CLARK WESTERN BUILDING, METAL-LITE, INC., SCAFCO STEEL STUD MANUFACTURING, CO., THE STEEL NETWORK, TOTAL STEEL SOLUTIONS, TELLING INDUSTRIES LLC, OR OLMAR SUPPLY STEEL, INC. MAY BE USED. WHEN ALTERNATE CEILING TRACKS ARE USED, CONSULT THE UL FIRE RESISTANCE DIRECTORY FOR INSTALLATION INSTRUCTIONS.
4. AS AN ALTERNATE TO HILTI CP 767 SPEED STRIPS, AND/OR CP 777 SPEED PLUGS, MINERAL WOOL (MIN. 4 PCF DENSITY) COMPRESSED 50% MAY BE USED.
5. MOVEMENT CAPABILITIES ARE 20% COMPRESSION AND 12.5% EXTENSION WHEN TYPE 300 FIREPROOFING IS USED.
6. USE OF PVC PLASTIC PIPE OR RNC CONDUIT (ITEM 6A) IS NOT APPLICABLE IN CANADA.



HILTI, Inc.  
Tulsa, Oklahoma USA (800) 879-8000

Sheet	2 of 2
Scale	-
Date	June 30, 2010

Drawing No.  
**HWD  
0564c**