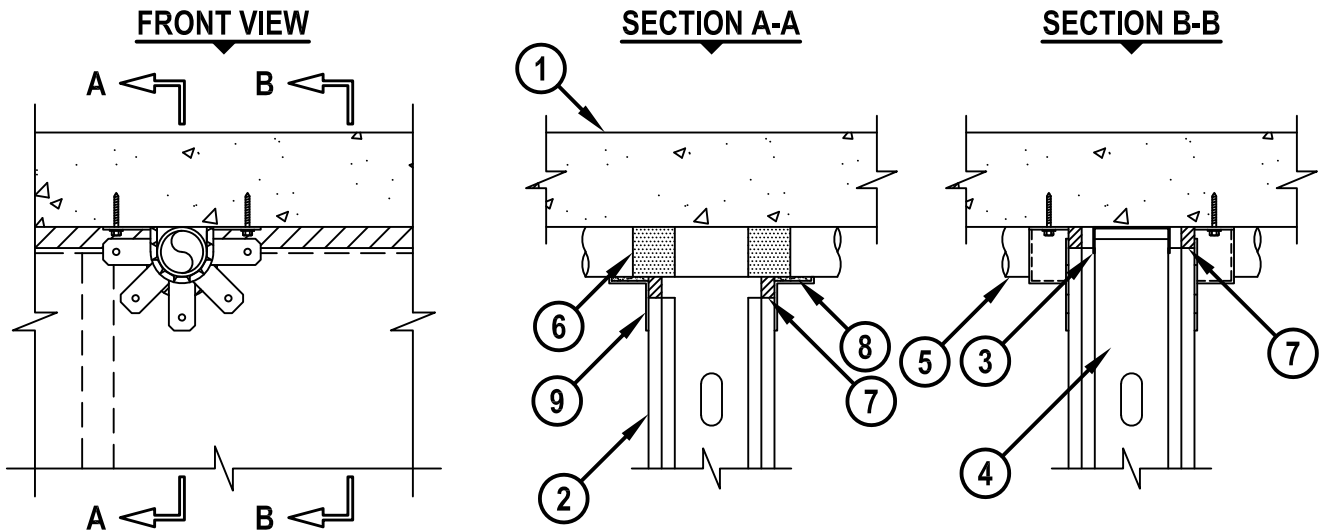


TOP OF WALL JOINT : GYPSUM WALL ASSEMBLY

ASSEMBLY RATING = 1-HR. OR 2-HR. (DEPENDING ON RATING OF WALL AND FLOOR ASSEMBLY)
 CLASS II MOVEMENT CAPABILITIES - 19% COMPRESSION OR EXTENSION

HWD0605b.101018



1. CONCRETE FLOOR ASSEMBLY (1-HR. OR 2-HR. FIRE-RATING) :
 - A. LIGHTWEIGHT OR NORMAL WEIGHT CONCRETE FLOOR ASSEMBLY (MIN. 2-1/2" THICK).
 - B. ANY UL/cUL CLASSIFIED PRE-CAST HOLLOW CORE CONCRETE FLOOR ASSEMBLY (MIN. 6" THICK).
2. GYPSUM WALL ASSEMBLY (UL CLASSIFIED U400 OR V400 SERIES) (1-HR. OR 2-HR. FIRE-RATING) (2-HR. SHOWN).
3. CEILING RUNNER (MIN. 25 GA., FLANGE HEIGHT OF CEILING RUNNER SHALL BE MINIMUM 1/4" GREATER THAN MAXIMUM EXTENDED JOINT WIDTH) FASTENED TO UNDERSIDE OF CONCRETE FLOOR WITH STEEL MASONRY ANCHORS OR STEEL FASTENERS (SPACED MAX. 24" O.C.).
4. STEEL STUDS (MIN. 3-1/2" WIDE), CUT 1/2" TO 3/4" LESS IN LENGTH THAN ASSEMBLY HEIGHT, NESTING IN CEILING RUNNER WITHOUT ATTACHMENT.
5. MAXIMUM 2" NOMINAL DIAMETER CPVC PLASTIC PIPE (SDR 13.5) (CLOSED PIPING SYSTEM ONLY).
6. NOMINAL 2" WIDE ALUMINUM TAPE WRAPPED TIGHTLY AROUND PIPE PRIOR TO INSTALLATION OF WRAP STRIP.
7. MINIMUM 5/8" DEPTH HILTI CP 606 FLEXIBLE FIRESTOP SEALANT (SEE NOTE NO. 3 BELOW).
8. SINGLE LAYER OF HILTI CP 648E WRAP STRIP (NOMINAL 1-3/4" WIDE x 3/16" THICK) INSTALLED IN A U-SHAPED FASHION WITH ENDS BUTTING UP AGAINST THE BOTTOM OF THE FLOOR.
9. HILTI 1-3/4" RETAINING COLLAR INSTALLED OVER WRAP STRIP. TWO ANCHOR TABS SHOULD BE BENT TOWARDS THE UNDERSIDE OF FLOOR AND SECURED TO CONCRETE FLOOR WITH 3/16" DIAMETER BY 1-3/4" LONG CONCRETE SCREW ANCHORS.

NOTES : 1. MAXIMUM WIDTH OF JOINT = 1".
 2. DIAMETER OF OPENING FOR CPVC = MAXIMUM 1" LARGER THAN OUTSIDE DIAMETER OF PIPE.
 3. HILTI CP 606 FLEXIBLE FIRESTOP SEALANT SHOULD BE APPLIED TO THE FOIL TAPE AROUND CPVC PIPE. CONTACT BETWEEN CPVC PIPE AND HILTI CP 606 SHOULD BE AVOIDED.



HILTI, Inc.
 Plano, Texas USA (800) 879-8000

Sheet	1 of 1
Scale	7/64" = 1"
Date	Oct. 10, 2018

Drawing No.
**HWD
 0605b**