

UL/cUL SYSTEM NO. HW-D-0635

TOP OF WALL JOINT : GYPSUM WALL ASSEMBLY

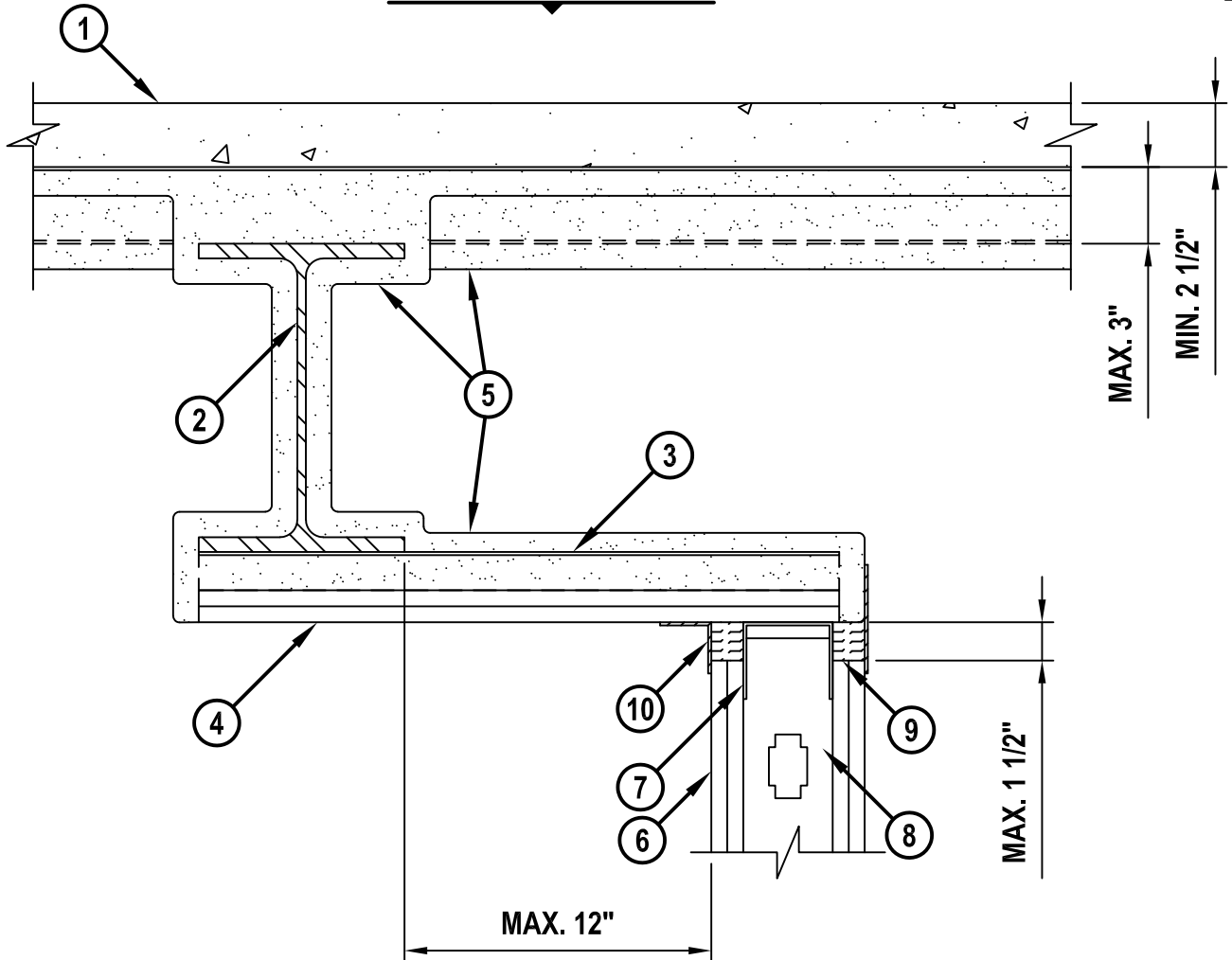
ASSEMBLY RATING = 1-HR. OR 2-HR.

L-RATING AT AMBIENT = LESS THAN 1 CFM / LIN FT

L-RATING AT 400°F = LESS THAN 1 CFM / LIN FT

CLASS II OR III MOVEMENT CAPABILITIES - 50% COMPRESSION OR EXTENSION

CROSS-SECTIONAL VIEW



HW-D-0635b.110116

1. LIGHTWEIGHT OR NORMAL WEIGHT CONCRETE FLOOR ASSEMBLY (MINIMUM 2-1/2" THICK) OVER METAL DECKING (UL/cUL CLASSIFIED D700 OR D900 SERIES) (1-HR. OR 2-HR. FIRE-RATING).
2. STRUCTURAL STEEL BEAM, AS SPECIFIED IN THE INDIVIDUAL D700 OR D900 SERIES DESIGN. STRUCTURAL STEEL BEAM ORIENTED PARALLEL TO AND MAXIMUM 12" FROM WALL ASSEMBLY.
3. MINIMUM 1" WIDE PAINTED OR GALVANIZED Z-SHAPED CLIPS OR CHANNELS (MIN. 16 GA.) SIZED TO EXTEND THROUGH THE THICKNESS OF FIREPROOFING, WITH 1-1/2" UPPER AND LOWER LEGS (SPACED MAX. 16" O/C). LEG OF CLIP FASTENED TO BOTTOM OF BEAM WITH STEEL FASTENERS OR WELDS (SPACED MAXIMUM 16" O/C) PRIOR TO INSTALLATION OF FIREPROOFING. CLIPS TO EXTEND FROM STEEL SUPPORT BEAM FLUSH WITH NON-BEAM FACE OF WALL.



Hilti Firestop Systems

HILTI, Inc.
Plano, Texas USA (800) 879-8000

Sheet	1 of 2
Scale	9/64" = 1"
Date	Nov. 01, 2016

Drawing No.

**HWD
0635b**

Saving Lives through Innovation and Education

UL/cUL SYSTEM NO. HW-D-0635

TOP OF WALL JOINT : GYPSUM WALL ASSEMBLY

ASSEMBLY RATING = 1-HR. OR 2-HR.

L-RATING AT AMBIENT = LESS THAN 1 CFM / LIN FT

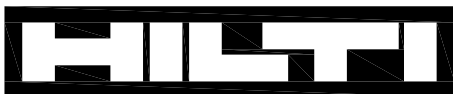
L-RATING AT 400°F = LESS THAN 1 CFM / LIN FT

CLASS II OR III MOVEMENT CAPABILITIES - 50% COMPRESSION OR EXTENSION

HW0635b.110116

4. TWO LAYERS OF 5/8" THICK GYPSUM BOARD (GLASS MAT FACED - MOISTURE RESISTANT) APPLIED TO BOTTOM OF STEEL ATTACHMENT CLIPS. BOARDS CUT TO LENGTH OF STEEL CLIPS AND SECURED TO EACH CLIP. BASE LAYER ATTACHED TO THE CLIPS USING 1" LONG TYPE S BUGLE-HEAD STEEL SCREWS (SPACED MAX. 12" O/C), MAXIMUM 1" FROM EACH END. OUTER LAYER ATTACHED TO CLIPS USING 1-5/8" LONG TYPE S BUGLE-HEAD STEEL SCREWS (SPACED MAXIMUM 12" O/C), MAXIMUM 1" FROM EACH END. BUTTED JOINTS ARE CENTERED OVER CLIPS AND JOINTS IN BASE AND OUTER LAYERS TO BE OFFSET. JOINTS AND SCREW HEADS IN OUTER LAYER COVERED WITH TWO COATS OF JOINT COMPOUND.
5. UL/cUL CLASSIFIED MONOKOTE TYPE MK-6/HY (MANUFACTURED BY W.R. GRACE) OR TYPE 300 (MANUFACTURED BY ISOLATEK, INT.) FIREPROOFING SPRAYED ON STEEL BEAM AND DECK (AS APPLICABLE) TO THE THICKNESS SPECIFIED IN THE INDIVIDUAL D700 OR D900 SERIES DESIGN. FIREPROOFING TO COMPLETELY FILL FLUTES ABOVE THE STRUCTURAL STEEL BEAM, COVER FURRING MEMBER TO THE MINIMUM THICKNESS OF MATERIAL REQUIRED ON THE FLANGES OF STEEL BEAM AND COMPLETELY FILLING THE SPACE BETWEEN THE CLIPS ABOVE THE WALL (SEE NOTES NO. 2 AND 3 BELOW).
6. GYPSUM WALL ASSEMBLY (UL/cUL CLASSIFIED U400 OR V400 SERIES) (1-HR. OR 2-HR. FIRE-RATING) (2-HR. SHOWN).
7. CEILING RUNNER (MIN. 25 GA., WITH 1-1/4" TO 3" FLANGES) SECURED TO STEEL FURRING WITH STEEL FASTENERS OR WELDS AT MAXIMUM 24" ON CENTER, PRIOR TO INSTALLATION OF FIREPROOFING.
8. STEEL STUDS (MINIMUM 3-1/2" WIDE) CUT 1/2" TO 3/4" LESS IN LENGTH THAN ASSEMBLY HEIGHT, NESTING IN CEILING RUNNER WITHOUT ATTACHMENT.
9. HILTI CP 767 SPEED STRIPS OR MINERAL WOOL SAFING (MIN. 4 PCF DENSITY) COMPRESSED 50% AND INSERTED INTO JOINT, FLUSH WITH BOTH SIDES OF WALL.
10. MINIMUM 1/8" (WET) THICKNESS HILTI CFS-SP WB FIRESTOP JOINT SPRAY TO COMPLETELY COVER MINERAL WOOL, OVERLAPPING MINIMUM 1/2" ONTO GYPSUM WALL AND MINIMUM 2" ONTO FIREPROOFING.

NOTES : 1. MAXIMUM WIDTH OF JOINT = 1-1/2".
2. THE TOTAL THICKNESS OF ADDITIONAL FIREPROOFING TO BE APPLIED TO THE WEB OF THE STEEL BEAM ON EACH SIDE OF THE WALL. APPLY 13/16" AND 1-1/2" THICKNESS FOR 1-HR. OR 2-HR. WALLS.
3. AS AN ALTERNATE TO FIREPROOFING ABOVE THE BEAM, HILTI CP 777 SPEED PLUGS MAY BE USED. WHEN SPEED PLUGS ARE USED, HILTI CFS-SP WB FIRESTOP JOINT SPRAY SHOULD BE APPLIED TO COVER THE PLUG AND OVERLAPPING MINIMUM 1/2" ONTO METAL DECK AND MINIMUM 2" ONTO FIREPROOFING.



Hilti Firestop Systems

HILTI, Inc.
Plano, Texas USA (800) 879-8000

Sheet	2 of 2
Scale	-
Date	Nov. 01, 2016

Drawing No.

**HWD
0635b**

Saving Lives through Innovation and Education