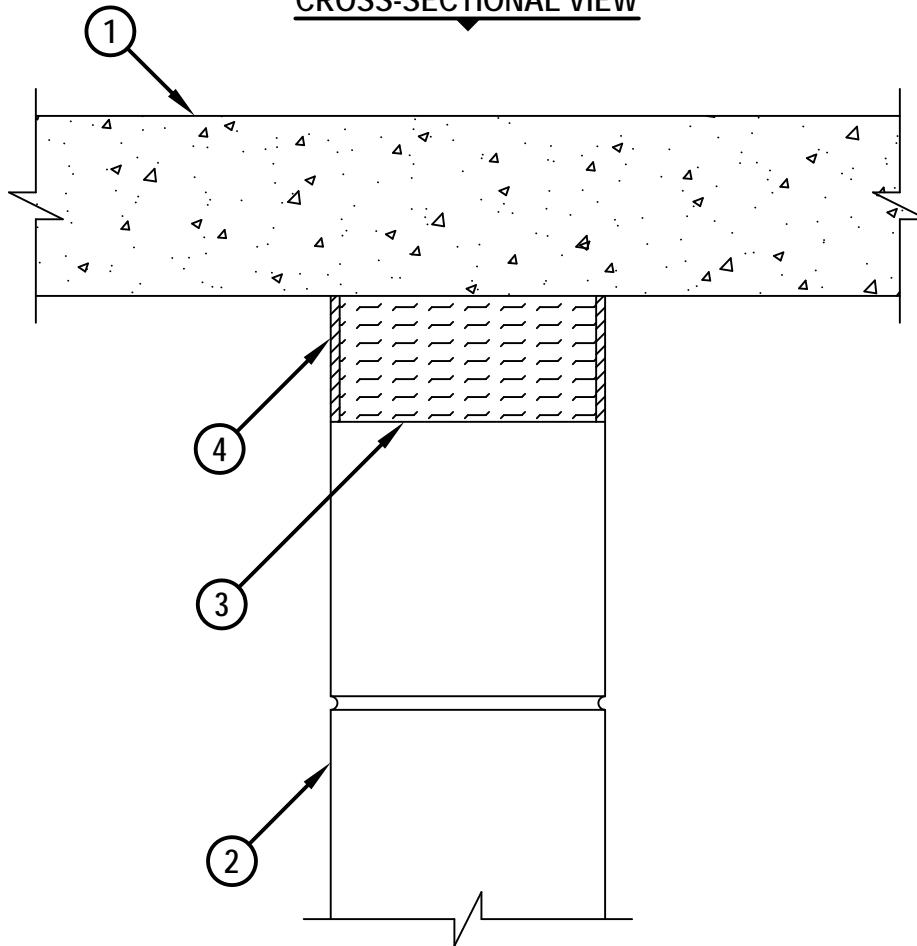


FIRE-RATED JOINT THROUGH CONCRETE WALL OR BLOCK WALL ASSEMBLY

ASSEMBLY RATING = 3-HR.

CLASS II MOVEMENT CAPABILITIES - 14% COMPRESSION OR EXTENSION

CROSS-SECTIONAL VIEW



HWD1008h.111313

1. LIGHTWEIGHT OR NORMAL WEIGHT CONCRETE FLOOR ASSEMBLY (MINIMUM 4-1/2" THICK) (3-HR. FIRE-RATING).
2. CONCRETE WALL ASSEMBLY (3-HR. FIRE-RATING) :
 - A. LIGHTWEIGHT OR NORMAL WEIGHT CONCRETE WALL (MINIMUM 4-3/4" THICK).
 - B. ANY UL/cUL CLASSIFIED CONCRETE BLOCK WALL.
3. MINIMUM 4-1/4" THICKNESS MINERAL WOOL SAFING (MIN. 4 PCF DENSITY) COMPRESSED MINIMUM 42%.
4. MINIMUM 1/4" DEPTH HILTI CP 601S ELASTOMERIC FIRESTOP SEALANT OR HILTI CFS-S SIL GG FIRESTOP SILICONE SEALANT.

NOTE : MAXIMUM WIDTH OF JOINT = 3-1/2".



HILTI, Inc.
Tulsa, Oklahoma USA (800) 879-8000

Sheet	1 of 1
Scale	3/16" = 1"
Date	Nov. 13, 2013

Drawing No.
**HWD
1008h**