

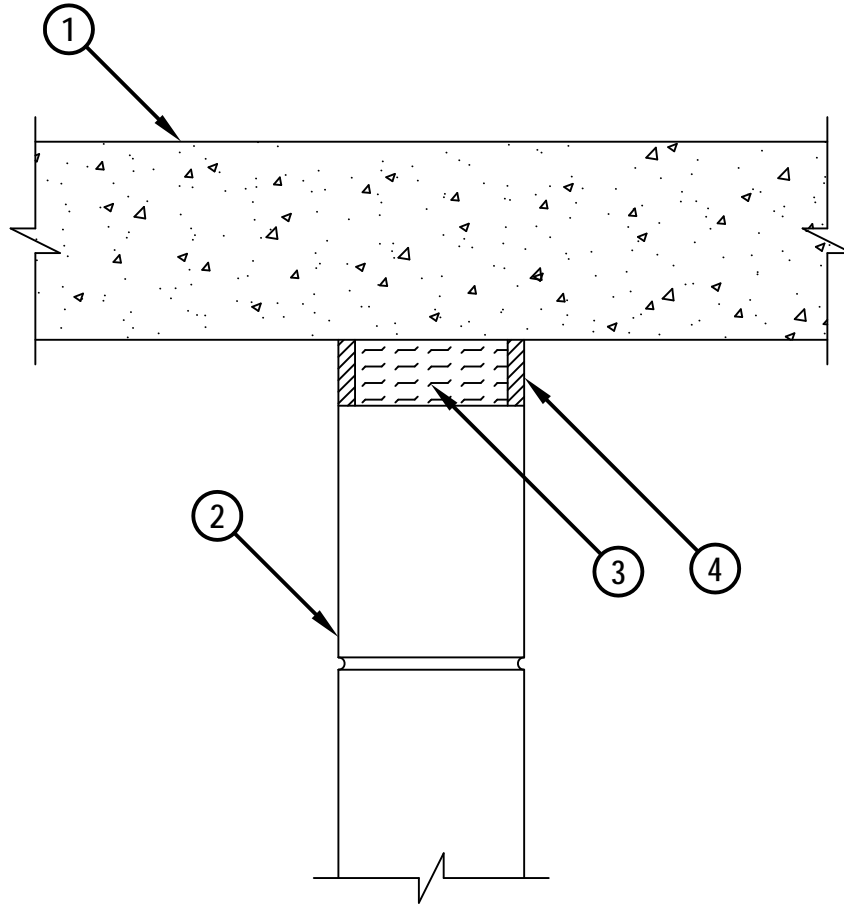
UL/cUL SYSTEM NO. HW-D-1042

FIRE-RATED JOINT THROUGH CONCRETE WALL OR BLOCK WALL ASSEMBLY

ASSEMBLY RATING = 4-HR.

CLASS II MOVEMENT CAPABILITIES - 12.5% COMPRESSION OR EXTENSION

CROSS-SECTIONAL VIEW



HWD1042b11313

1. LIGHTWEIGHT OR NORMAL WEIGHT CONCRETE FLOOR ASSEMBLY (MIN. 6" THICK) (4-HR. FIRE- RATING).
2. CONCRETE WALL ASSEMBLY (4-HR. FIRE-RATING) :
 - A. LIGHTWEIGHT OR NORMAL WEIGHT CONCRETE WALL (MINIMUM 6" THICK).
 - B. ANY UL/cUL CLASSIFIED CONCRETE BLOCK WALL.
3. MINIMUM 5" THICKNESS MINERAL WOOL SAFING (MIN. 4 PCF DENSITY) COMPRESSED MINIMUM 50%.
4. MINIMUM 1/2" DEPTH HILTI CP 601S ELASTOMERIC FIRESTOP SEALANT OR HILTI CFS-S SIL GG FIRESTOP SILICONE SEALANT.

NOTE : MAXIMUM WIDTH OF JOINT = 2".



HILTI, Inc.
Tulsa, Oklahoma USA (800) 879-8000

Sheet	1 of 1
Scale	1 1/64" = 1"
Date	Nov. 13, 2013

Drawing No.
**HWD
1042b**

Saving Lives through Innovation and Education