

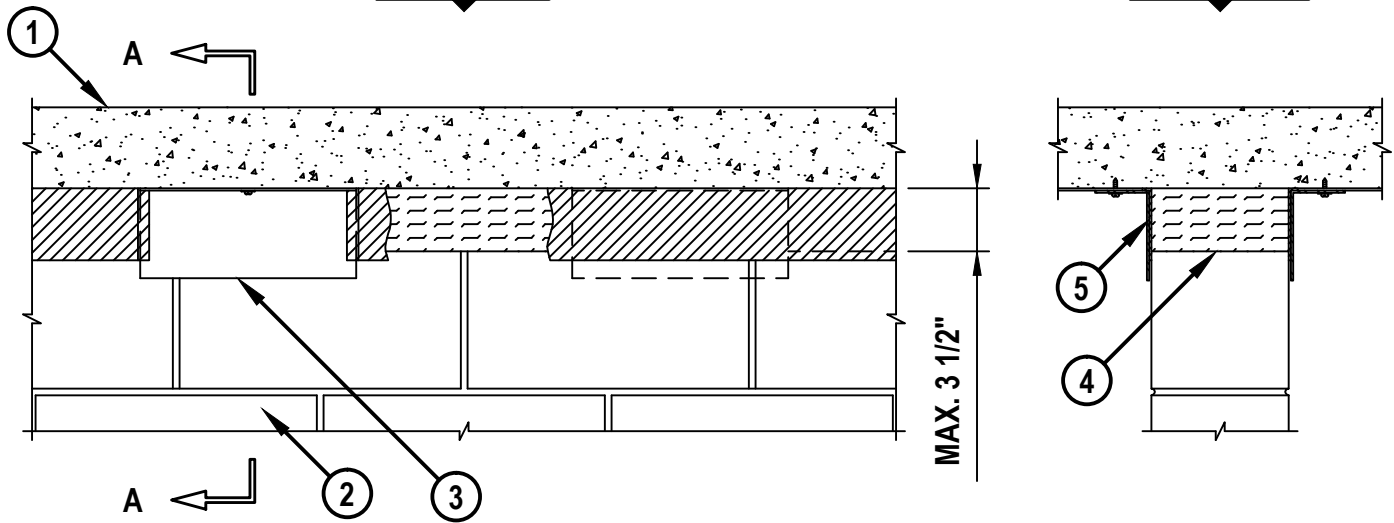
TOP OF WALL JOINT : CONCRETE BLOCK WALL ASSEMBLY

ASSEMBLY RATING = 2-HR.

CLASS II MOVEMENT CAPABILITIES - 14% COMPRESSION OR EXTENSION

FRONT VIEW

SECTION A-A



HWD1045d.100517

1. LIGHTWEIGHT OR NORMAL WEIGHT CONCRETE FLOOR ASSEMBLY (MINIMUM 4-1/2" THICK) (2-HR. FIRE-RATING).
2. CONCRETE WALL ASSEMBLY (2-HR. FIRE-RATING) :
 - A. LIGHTWEIGHT OR NORMAL WEIGHT CONCRETE WALL (MINIMUM 8" THICK).
 - B. ANY UL/cUL CLASSIFIED CONCRETE BLOCK WALL.
3. STEEL ANGLES (MAXIMUM SIZE : 5" x 3" x 12 GA., OR THICKER) CUT MAXIMUM 12" LONG AND FASTENED TO CONCRETE FLOOR AT MINIMUM 24" C/C. STEEL ANGLES TO BE STAGGERED ON OPPOSITE SIDE OF WALL.
4. MINIMUM 8" THICKNESS MINERAL WOOL SAFING (MIN. 4 PCF DENSITY) COMPRESSED 50% AND INSERTED INTO JOINT, BEHIND STEEL ANGLES.
5. MINIMUM 1/8" (WET) THICKNESS HILTI CFS-SP WB FIRESTOP JOINT SPRAY TO COMPLETELY COVER MINERAL WOOL AND TO OVERLAP MINIMUM 1/2" ONTO BLOCK WALL, STEEL ANGLES AND CONCRETE FLOOR, ON BOTH SIDES OF WALL ASSEMBLY.

NOTE : MAXIMUM WIDTH OF JOINT = 3-1/2".

 Hilti Firestop Systems	HILTI, Inc. Plano, Texas USA (800) 879-8000	Sheet 1 of 1	Drawing No. HWD 1045d
		Scale 3/32" = 1"	
		Date Oct. 05, 2017	
<i>Saving Lives through Innovation and Education</i>			