

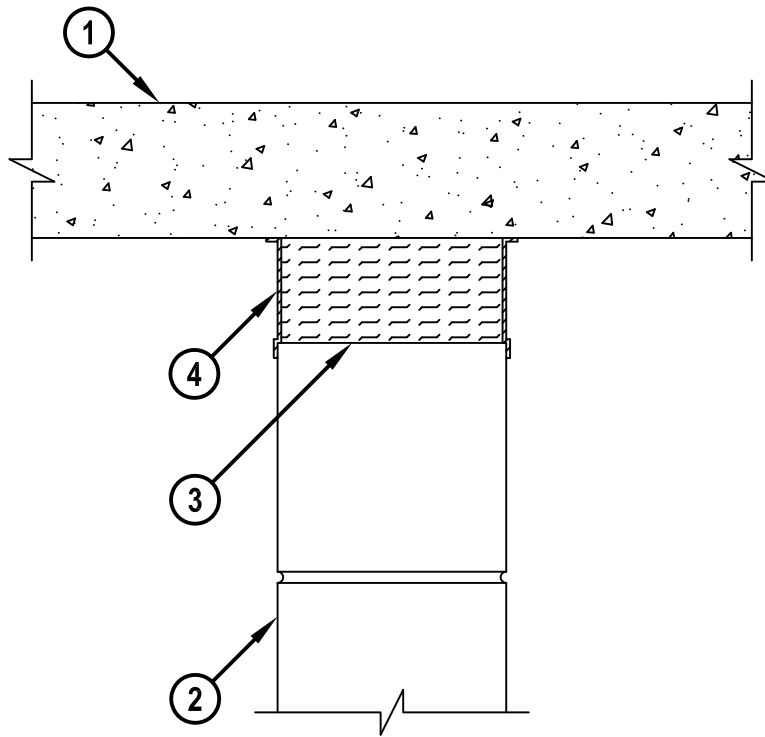
UL/cUL SYSTEM NO. HW-D-1058

FIRE-RATED JOINT THROUGH CONCRETE WALL OR BLOCK WALL ASSEMBLY

ASSEMBLY RATING = 3-HR.

CLASS II MOVEMENT CAPABILITIES - 25% COMPRESSION OR EXTENSION

CROSS-SECTIONAL VIEW



HWD1058b.052510

1. LIGHTWEIGHT OR NORMAL WEIGHT CONCRETE FLOOR ASSEMBLY (MINIMUM 4-1/2" THICK) (3-HR. FIRE-RATING).
2. CONCRETE WALL ASSEMBLY (3-HR. FIRE-RATING):
 - A. LIGHTWEIGHT OR NORMAL WEIGHT CONCRETE WALL (MINIMUM 8" THICK).
 - B. ANY UL/cUL CLASSIFIED CONCRETE BLOCK WALL ASSEMBLY.
3. MINIMUM 8" THICKNESS MINERAL WOOL (MINIMUM 4 PCF DENSITY) COMPRESSED 50%.
4. MINIMUM 1/8" (WET) THICKNESS HILTI CFS-SP WB FIRESTOP JOINT SPRAY OR HILTI CP 672 SPEED SPRAY APPLIED WITHIN THE JOINT, FLUSH WITH EACH SURFACE OF WALL AND OVERLAPPING MINIMUM 1/2" ONTO FLOOR AND WALL ON BOTH SIDES OF JOINT.

NOTE : MAXIMUM WIDTH OF JOINT = 3-1/4".



HILTI, Inc.
Tulsa, Oklahoma USA (800) 879-8000

Sheet	1 of 1
Scale	5/32" = 1"
Date	May 25, 2010

Drawing No.
**HWD
1058b**

Saving Lives through Innovation and Education