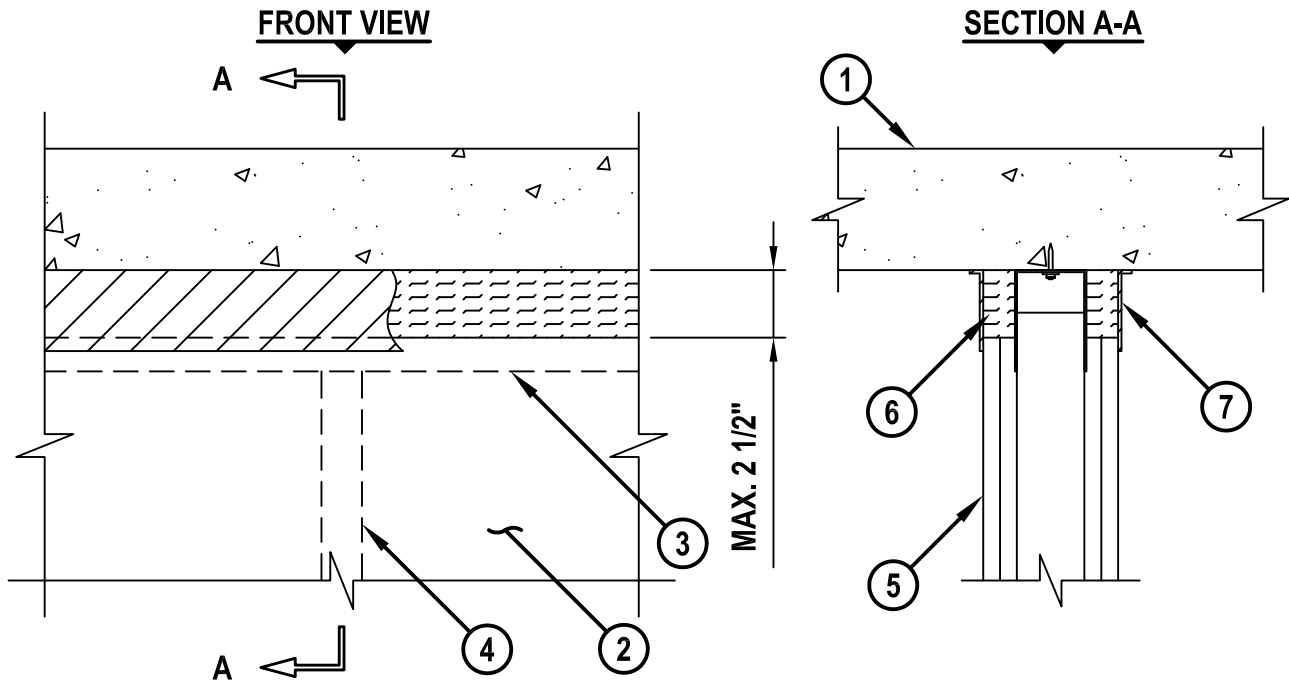


**TOP OF WALL JOINT : GYPSUM WALL ASSEMBLY**

ASSEMBLY RATING = 1-HR. OR 2-HR.

CLASS II MOVEMENT CAPABILITIES - 40% COMPRESSION OR EXTENSION



HWD1068c.052510

1. CONCRETE FLOOR ASSEMBLY (1-HR. OR 2-HR. FIRE-RATING) :
  - A. LIGHTWEIGHT OR NORMAL WEIGHT CONCRETE FLOOR ASSEMBLY (MIN. 4-1/2" THICK).
  - B. ANY UL/cUL CLASSIFIED PRE-CAST HOLLOW CORE CONCRETE FLOOR ASSEMBLY (MIN. 6" THICK).
2. GYPSUM WALL ASSEMBLY (UL/cUL CLASSIFIED U400 OR V400 SERIES) (1-HR. OR 2-HR. FIRE-RATING) (2-HR. SHOWN).
3. CEILING RUNNER (MIN. 25 GA., FLANGE HEIGHT OF CEILING RUNNER SHALL BE MINIMUM 1/4" GREATER THAN MAXIMUM EXTENDED JOINT WIDTH) FASTENED TO UNDERSIDE OF CONCRETE FLOOR WITH STEEL MASONRY ANCHORS OR STEEL FASTENERS (SPACED 24" O.C.).
4. STEEL STUDS (MIN. 2-1/2" WIDE), CUT 1-1/4" TO 1-1/2" LESS IN LENGTH THAN ASSEMBLY HEIGHT, NESTING IN CEILING RUNNER WITHOUT ATTACHMENT.
5. 5/8" OR 1-1/4" THICKNESS GYPSUM WALLBOARD AS SPECIFIED IN THE INDIVIDUAL UL DESIGN. TOP ROW OF SCREWS SHALL BE INSTALLED INTO STUDS 5" BELOW THE BOTTOM PLANE OF FLOOR.
6. HILTI CP 767 SPEED STRIPS COMPRESSED 50% AND TIGHTLY PACKED INTO THE JOINT, FLUSH WITH BOTH SIDES OF WALL (SEE NOTE BELOW).
7. MINIMUM 1/8" (WET) THICKNESS HILTI CFS-SP WB FIRESTOP JOINT SPRAY OR HILTI CP 672 SPEED SPRAY TO COMPLETELY COVER MINERAL WOOL AND TO OVERLAP A MINIMUM OF 1/2" ONTO GYPSUM AND CONCRETE FLOOR ON BOTH SIDES OF WALL.

**NOTE : AS AN ALTERNATE TO HILTI CP 767 SPEED STRIPS, MINERAL WOOL (MIN. 4 PCF DENSITY) COMPRESSED 50% MAY BE USED.**



HILTI, Inc.  
Tulsa, Oklahoma USA (800) 879-8000

Sheet	1 of 1
Scale	9/64" = 1"
Date	May 25, 2010

Drawing No.  
**HWD  
1068c**