

BLANK OPENING IN CONCRETE OR CONCRETE BLOCK WALL ASSEMBLY

F-RATING = 2-HR.

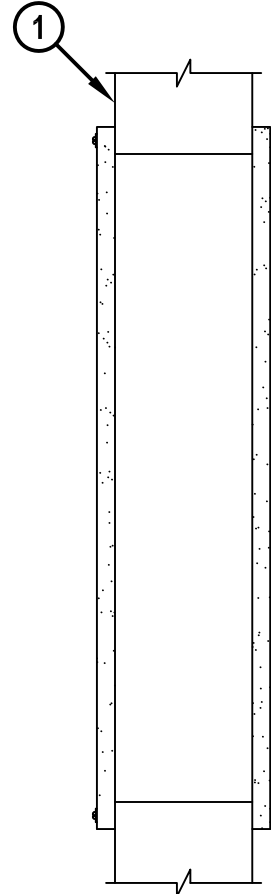
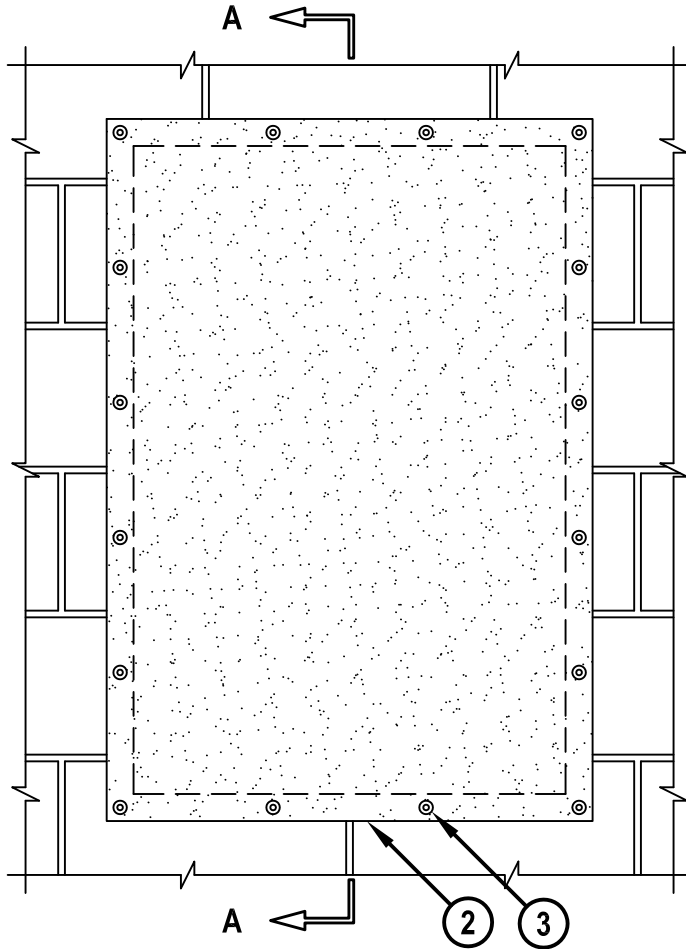
T-RATING = 1-HR.

L-RATING AT AMBIENT = LESS THAN 1 CFM / SQ FT

L-RATING AT 400°F = LESS THAN 1 CFM / SQ FT

FRONT VIEW

SECTION A-A



WJ0007c-010815

1. CONCRETE WALL ASSEMBLY (2-HR. FIRE-RATING) :
 - A. LIGHTWEIGHT OR NORMAL WEIGHT CONCRETE WALL ASSEMBLY (MINIMUM 6" THICK).
 - B. ANY UL/cUL CLASSIFIED BLOCK WALL ASSEMBLY.
2. HILTI CP 675 T FIRESTOP BOARD CUT TO OVERLAP OPENING MINIMUM 1" ON ALL SIDES.
3. FASTEN HILTI CP 675 T FIRESTOP BOARD TO WALL UTILIZING 3/16" x 2-1/4" LONG STEEL ANCHOR SCREWS WITH R-32 STEEL WASHERS AT EACH CORNER OF OPENING AND MAXIMUM 8" C/C AROUND PERIMETER OF FIRESTOP BOARD ON BOTH SIDES OF WALL (SEE NOTE NO. 2 BELOW).

NOTES : 1. MAXIMUM SIZE OF OPENING = 24" x 36".
 2. PRIOR TO FASTENING HILTI CP 675 T FIRESTOP BOARD TO WALL ASSEMBLY, APPLY A MINIMUM 1/8" WIDE BEAD OF HILTI FS-ONE MAX OR FS-ONE INTUMESCENT FIRESTOP SEALANT OR MINIMUM 1" WIDE CP 619 T PUTTY ROLL AROUND PERIMETER OF EACH BOARD.



HILTI, Inc.
 Tulsa, Oklahoma USA (800) 879-8000

Sheet	1 of 1
Scale	3/32" = 1"
Date	Jan. 08, 2015

Drawing No.
WJ
0007c