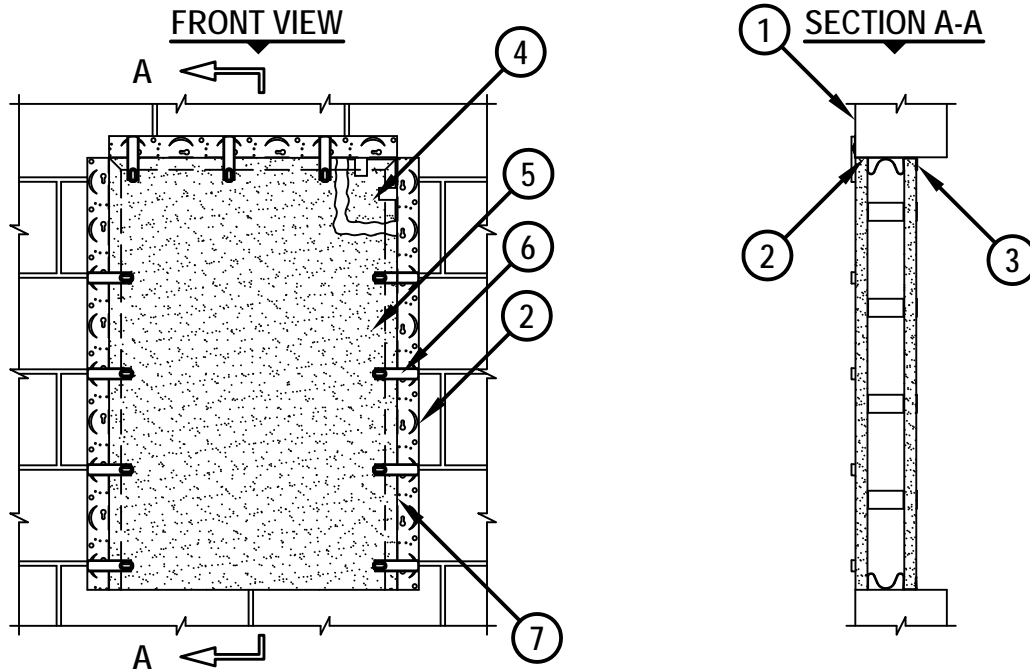


BLANK OPENING IN CONCRETE OR BLOCK WALL ASSEMBLY

F-RATING = 2-HR.

T-RATING = 1-HR.



1. CONCRETE WALL ASSEMBLY (2-HR. FIRE-RATING) :
 - A. LIGHTWEIGHT OR NORMAL WEIGHT CONCRETE WALL (MINIMUM 6" THICK).
 - B. ANY UL/cUL CLASSIFIED SOLID OR FILLED CONCRETE BLOCK WALL.
2. FASTEN HILTI CP 675 Z-FRAME TO WALL ON THREE SIDES OF OPENING (AS SHOWN) WITH 3/16" x 1-1/4" CONCRETE SCREW ANCHORS AT MAXIMUM 12" C/C SPACING.
3. HILTI CP 619T FIRESTOP PUTTY ROLL APPLIED TO THE BACK LIP OF CP 675 Z-FRAME AND FROM SIDE TO SIDE AT THE BOTTOM OF OPENING FLUSH WITH FRONT SURFACE OF WALL AND BACK EDGES OF Z-FRAME (NOT SHOWN).
4. HILTI CP 675 DISTANCE HOLDERS PLACED OVER ONE HILTI CP 675T FIRESTOP BOARD AT MAXIMUM 8" C/C SPACING AROUND PERIMETER OF FIRESTOP BOARD AND INSERTED FLUSH WITH BACK EDGE OF Z-FRAME (SEE NOTE NO'S. 2 AND 3 BELOW).
5. HILTI CP 675T FIRESTOP BOARD INSERTED INTO OPENING AND PUSHED FLUSH WITH FRONT SURFACE OF WALL (SEE NOTE NO'S. 2 AND 3 BELOW).
6. CP 675 Z-FRAME LATCHES SECURED TO Z-FRAME AT EVERY OTHER LOCKING SPACE (MIN. TWO PER SIDE). TURN AND LOCK Z-FRAME LATCHES IN PLACE SO THEY EXTEND OVER THE FIRESTOP BOARD.
7. HILTI CP 619T FIRESTOP PUTTY ROLL CENTERED OVER SEAM BETWEEN FIRESTOP BOARD AND Z-FRAME, IN BETWEEN LATCHES (NOT SHOWN).

NOTES : 1. MAXIMUM AREA OF OPENING IS 864 SQ. IN., WITH A MAXIMUM DIMENSION OF 36".
 2. FIRESTOP BOARDS SHALL BE CUT TO FIT INTERIOR OF OPENING. FIRESTOP BOARDS SHALL NOT BE MORE THAN 1/4" LESS IN WIDTH AND HEIGHT THAN OPENING SIZE.
 3. APPLY MINIMUM 1" DEPTH HILTI FIRESTOP PUTTY TO FILL GAPS AROUND FIRESTOP BOARDS EXCEEDING 1/8" IN WIDTH.



HILTI, Inc.
 Tulsa, Oklahoma USA (800) 879-8000

Sheet	1 of 1
Scale	1/16" = 1"
Date	May 07, 2012

Drawing No.
WJ
0008b

WJ0008b.050712